

Global Tropics Hazards And Benefits Outlook

November 19, 2013

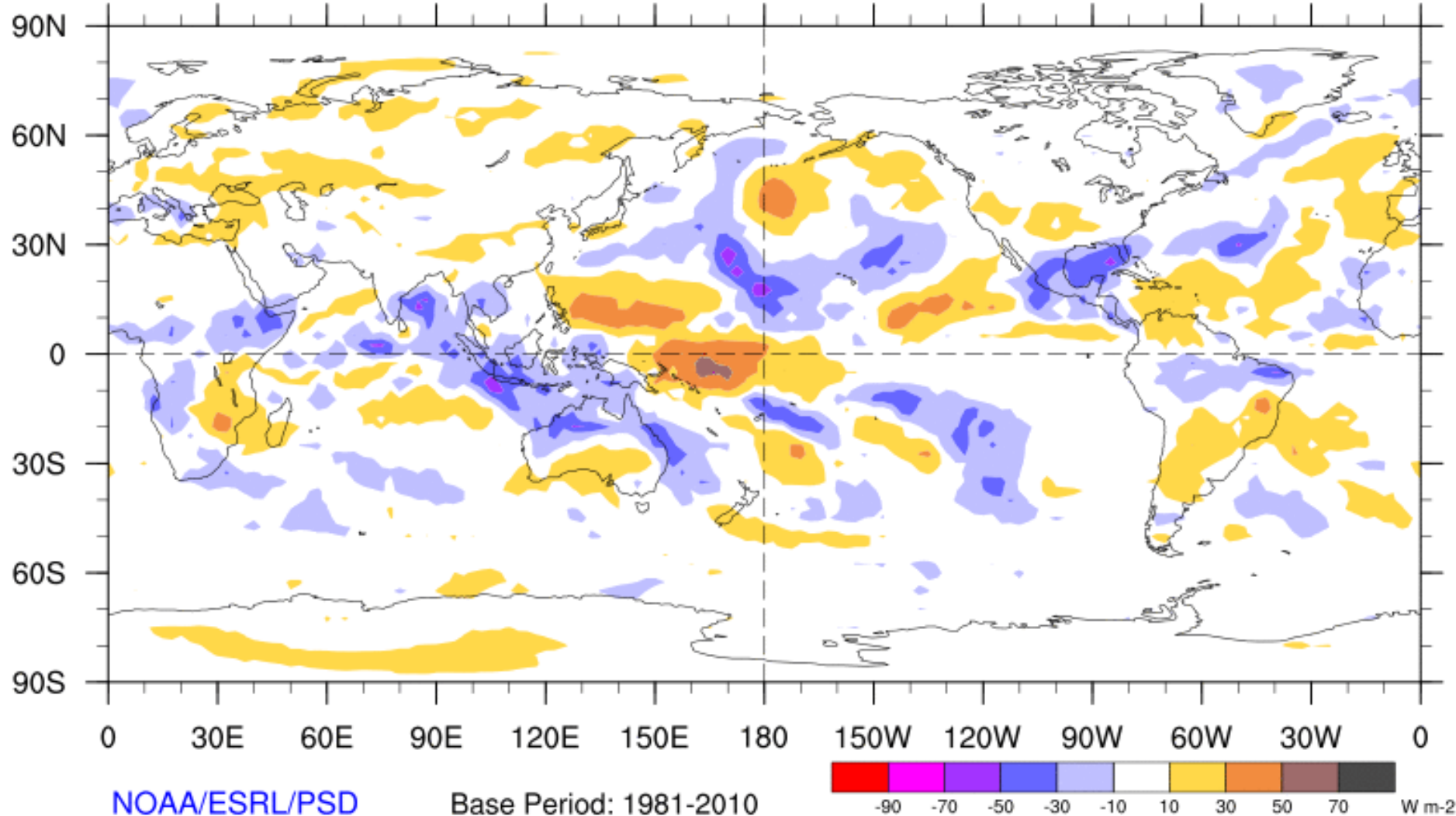
Adam Allgood

Outline

1. Review of Recent Conditions
2. Synopsis of Climate Modes
3. GTH Outlook and Forecast Discussion
4. Connections to U.S. Impacts

7-Day Average OLR Anomaly

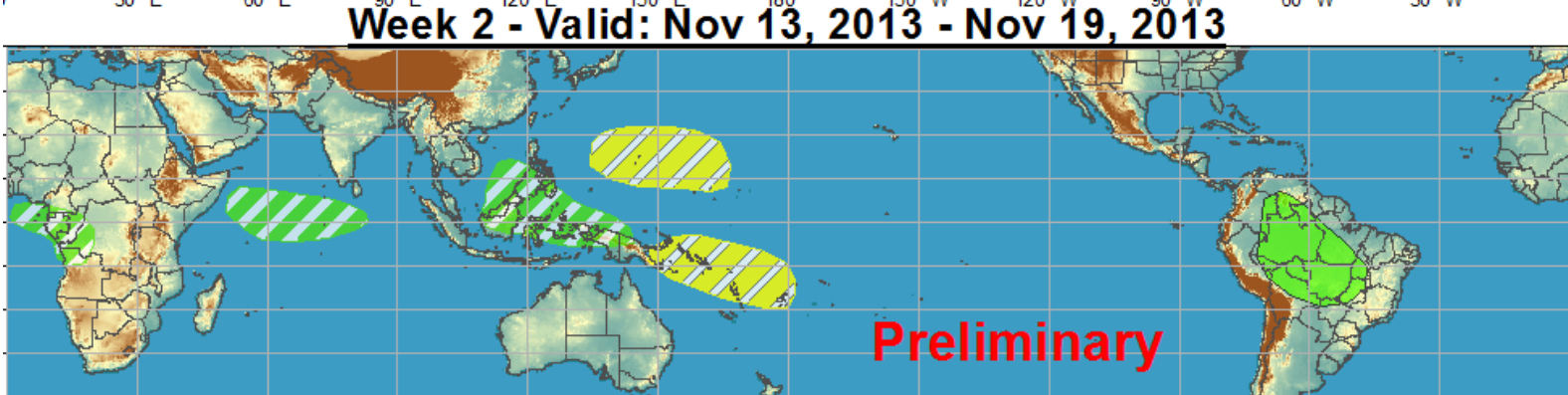
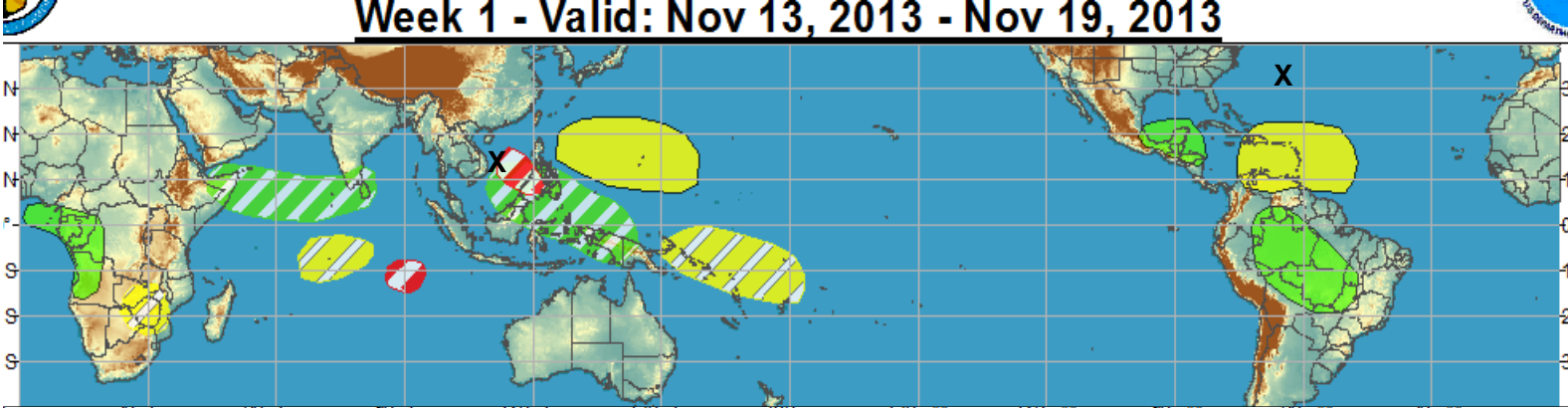
2013/11/11 - 2013/11/17



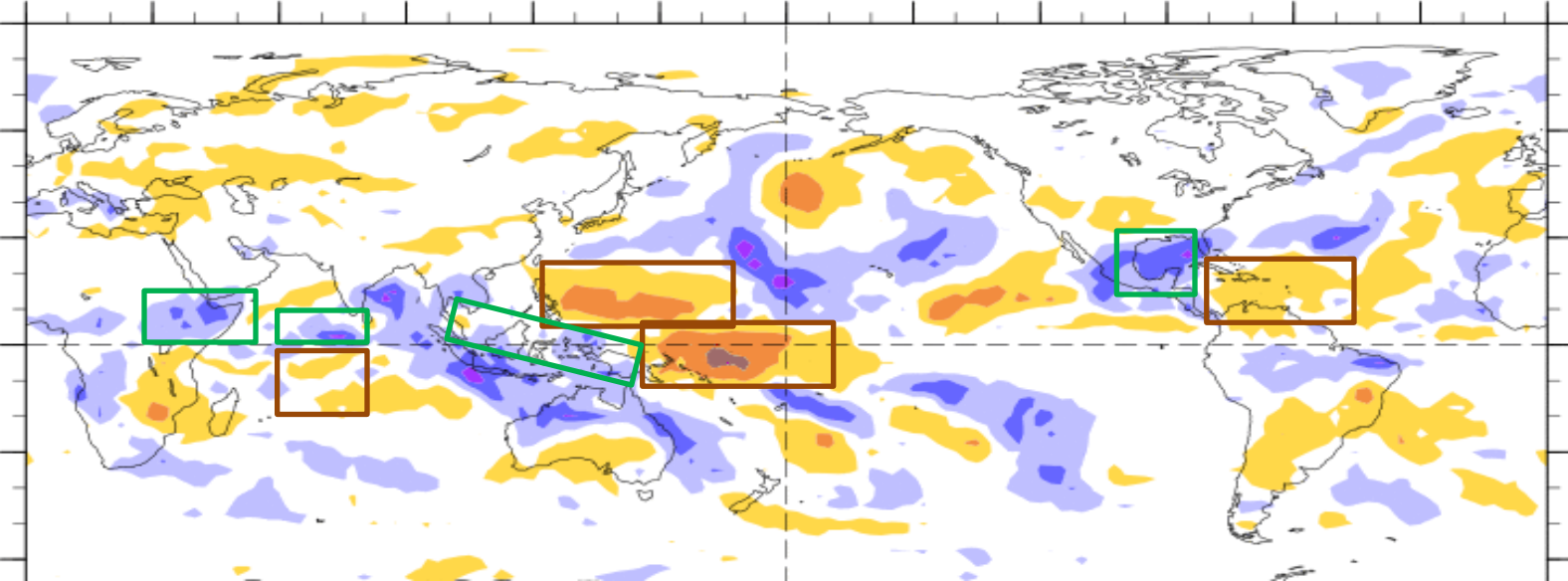
Outlook Review

Tropical Cyclones:

- Podul (11/14)
- Melissa (11/18)



7-Day Average OLR Anomaly 2013/11/11 - 2013/11/17



OLR Anomalies:

Blue: Associated
with enhanced
precip

Tan: Associated
with suppressed
precip

Synopsis of Climate Modes

ENSO:

- ENSO-neutral is expected through the Northern Hemisphere spring 2014 (Nov. 7 update)

MJO and other subseasonal tropical variability:

- The MJO continued to become less coherent during the previous week, with influence from other types of coherent tropical subseasonal variability dominating the anomalous convection and circulation pattern.
- Dynamical model MJO index forecasts indicate little signal over the next several days. The majority of dynamical forecasts do show the potential for a weak eastward moving signal re-emerging over the eastern IO/Maritime Continent during Week-2.
- It is too early to conclude that this potential signal will emerge as a longer lived, more robust MJO.

Extratropics:

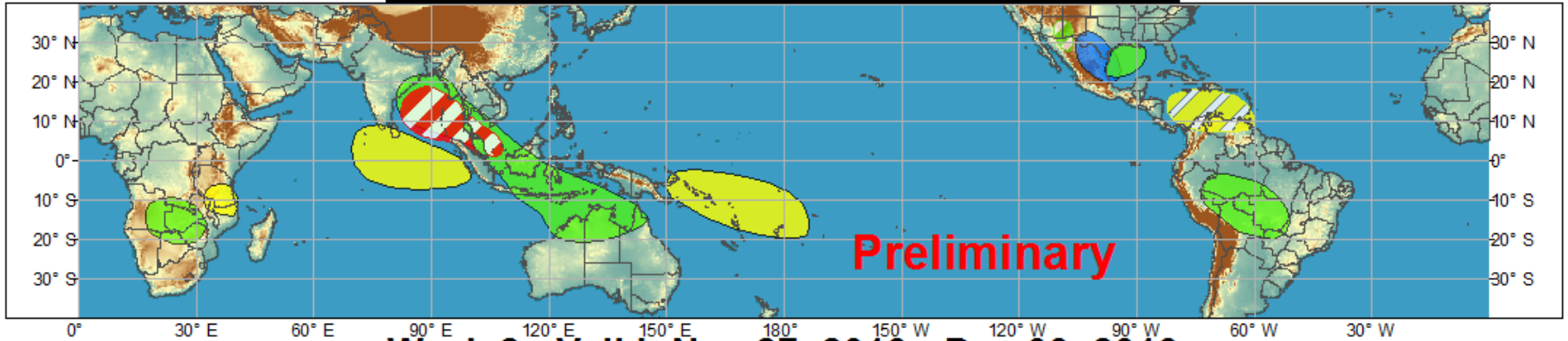
- Given the weak signal, the MJO is not expected to contribute significantly to North American climate anomalies. An MJO in phases 4 or 5 (if a signal emerges and propagates eastward over the Maritime Continent) is associated with a tilt towards below normal temperatures over the southeastern CONUS and enhanced precipitation over the Northeast.



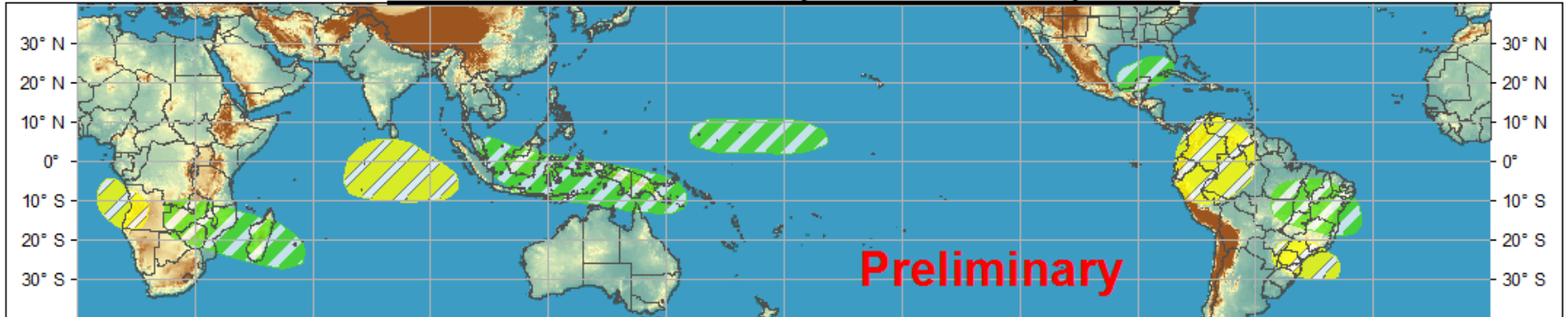
Global Tropics Hazards and Benefits Outlook - Climate Prediction Center



Week 1 - Valid: Nov 20, 2013 - Nov 26, 2013



Week 2 - Valid: Nov 27, 2013 - Dec 03, 2013



Confidence
High Moderate

- Tropical Cyclone Formation**
- Above-average rainfall**
- Below-average rainfall**
- Above-normal temperatures**
- Below-normal temperatures**



- Development of a tropical cyclone that eventually reaches tropical storm/cyclone strength.
- Weekly total rainfall in the upper third of the historical range.
- Weekly total rainfall in the lower third of the historical range.
- 7-day mean temperatures in the upper third of the historical range.
- 7-day mean temperatures in the lower third of the historical range.

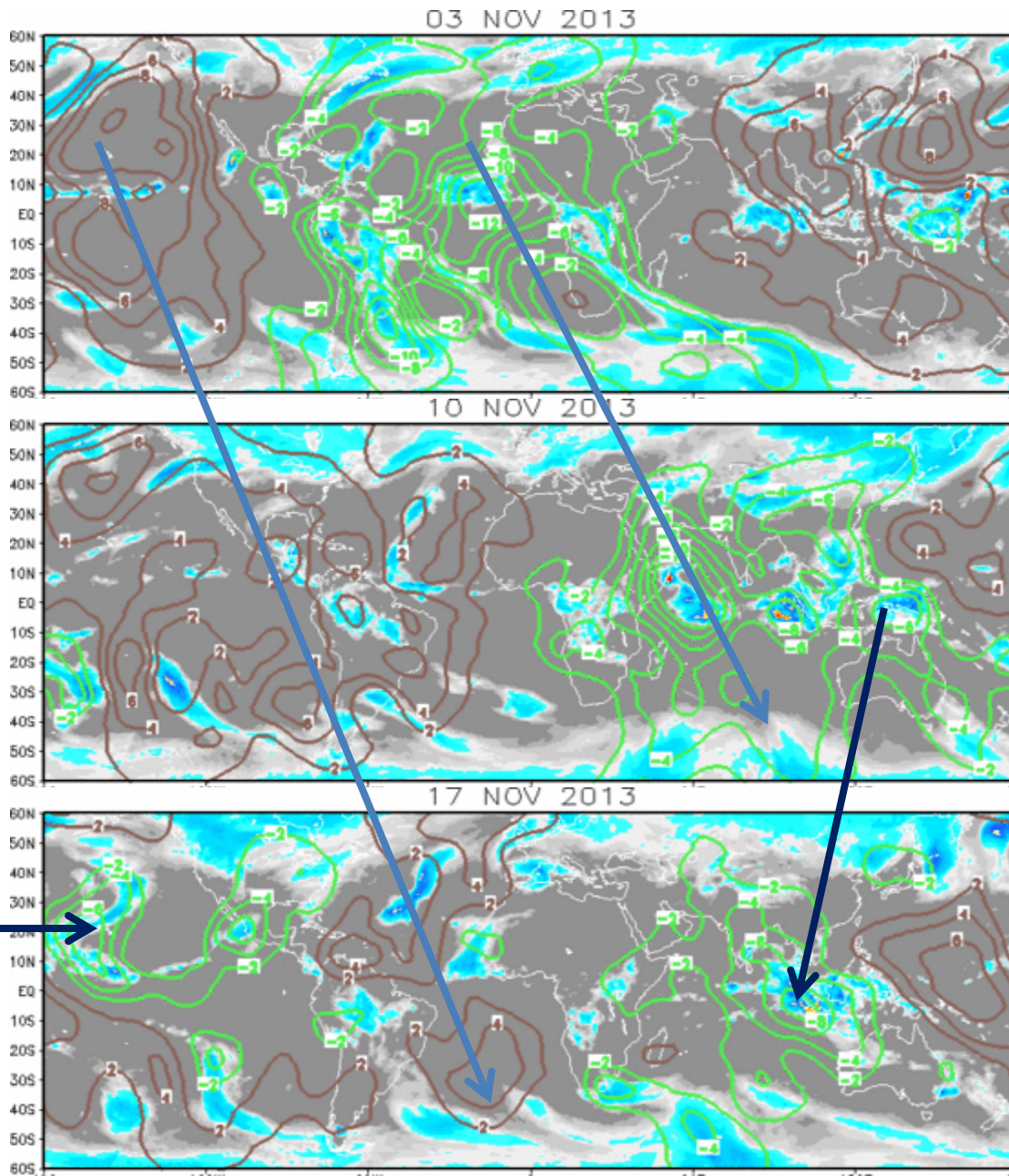
Produced: 11/19/2013
Forecaster: Allgood

Product is updated once per week. The product targets broad scale conditions integrated over a 7-day period for US interests only. Consult your local responsible forecast agency.



IR Satellite & 200-hpa Velocity Potential Anomalies

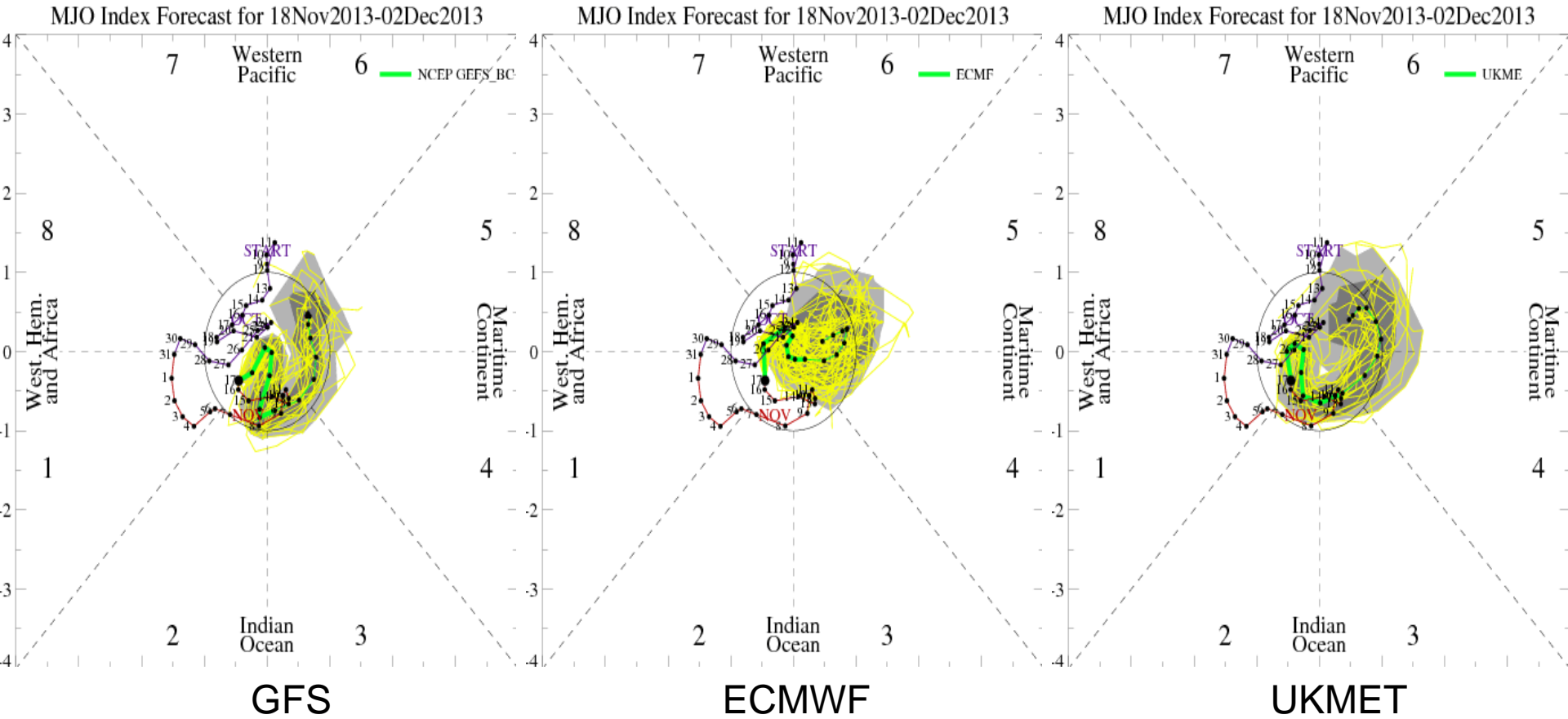
Green: Enhanced Divergence Brown: Enhanced Convergence



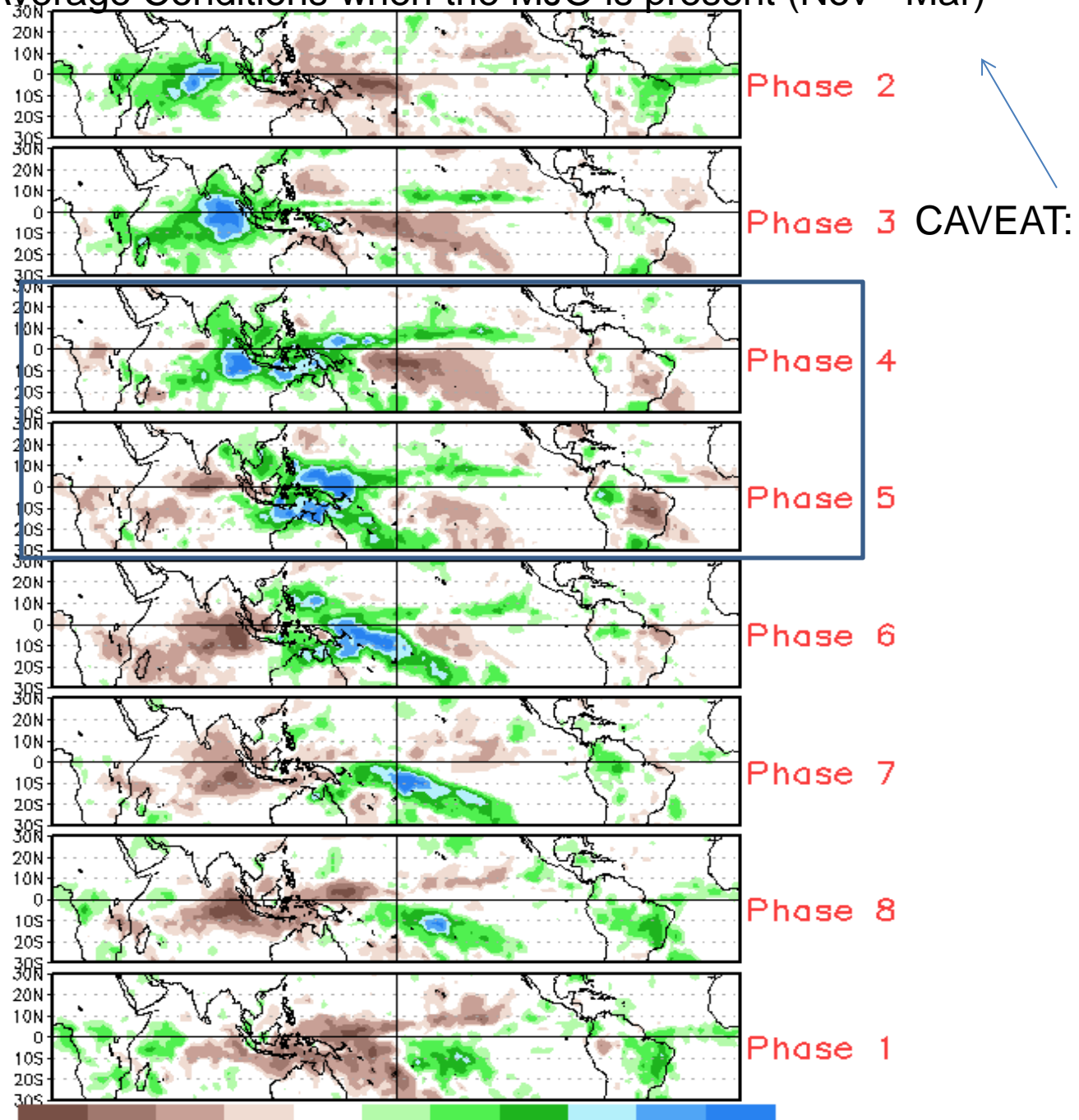
Evidence of
Rossby Waves

Possible
Kelvin Wave
activity →

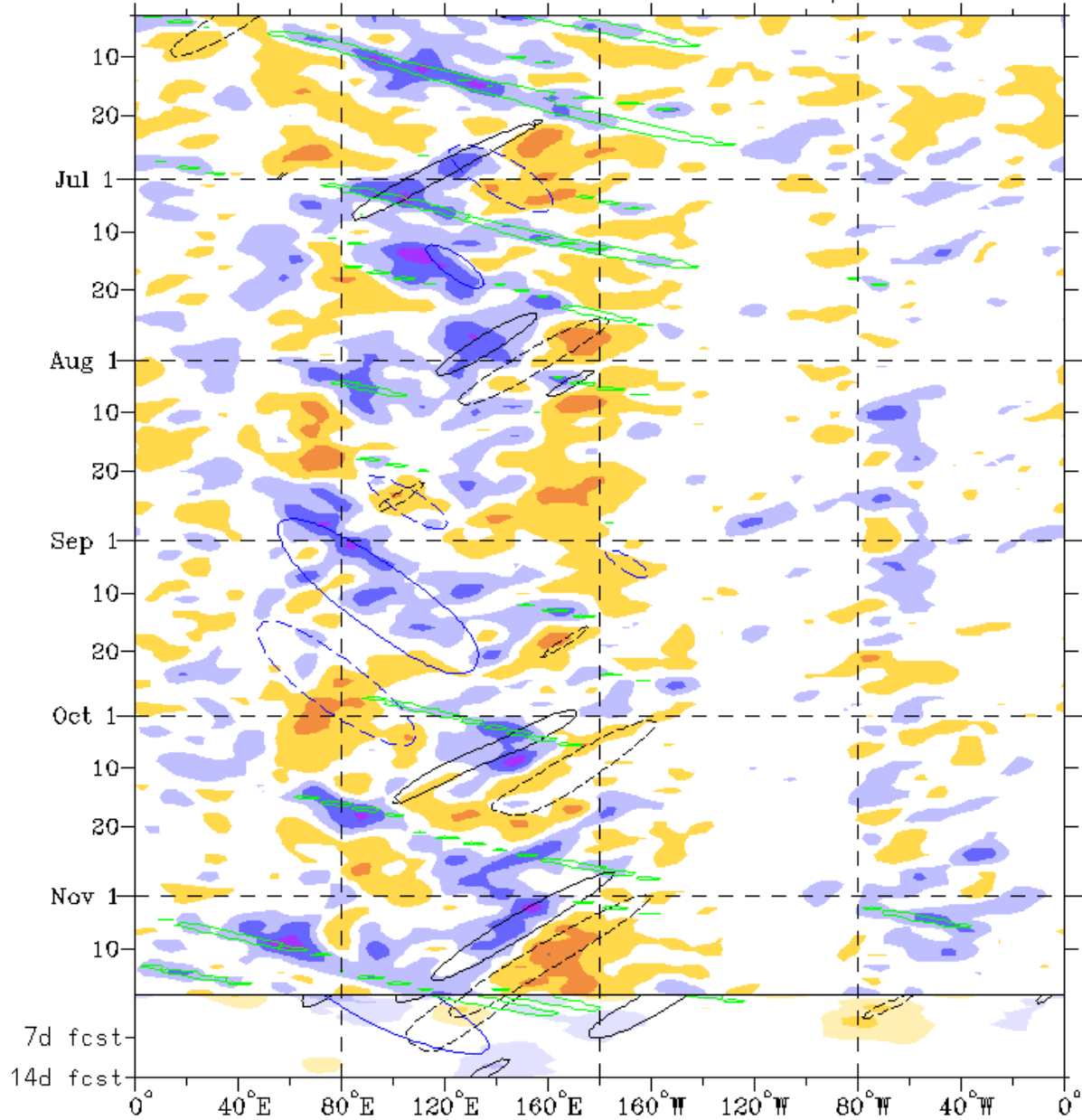
MJO Observation/Forecast



Average Conditions when the MJO is present (Nov - Mar)



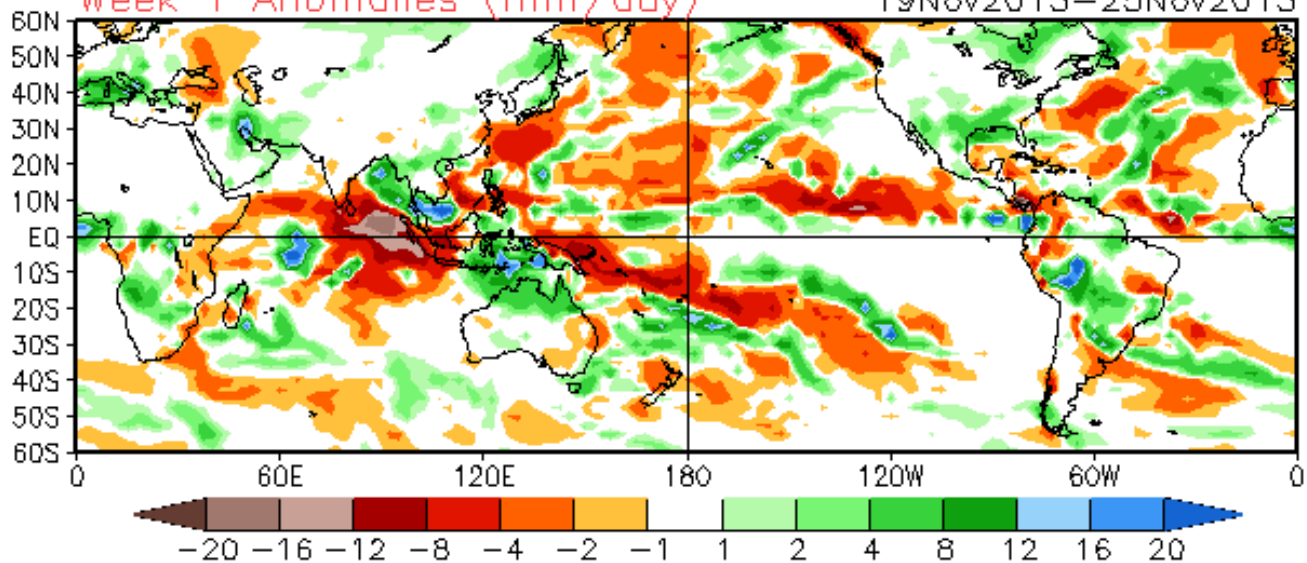
Rapid eastward propagating feature over the Indian Ocean is interacting with a Rossby Wave over the Maritime Continent (TC activity in the western Pacific contributed to some of the signal projecting onto the Rossby band in late Oct/early Nov)



Indications of Kelvin Wave activity over the central Pacific.

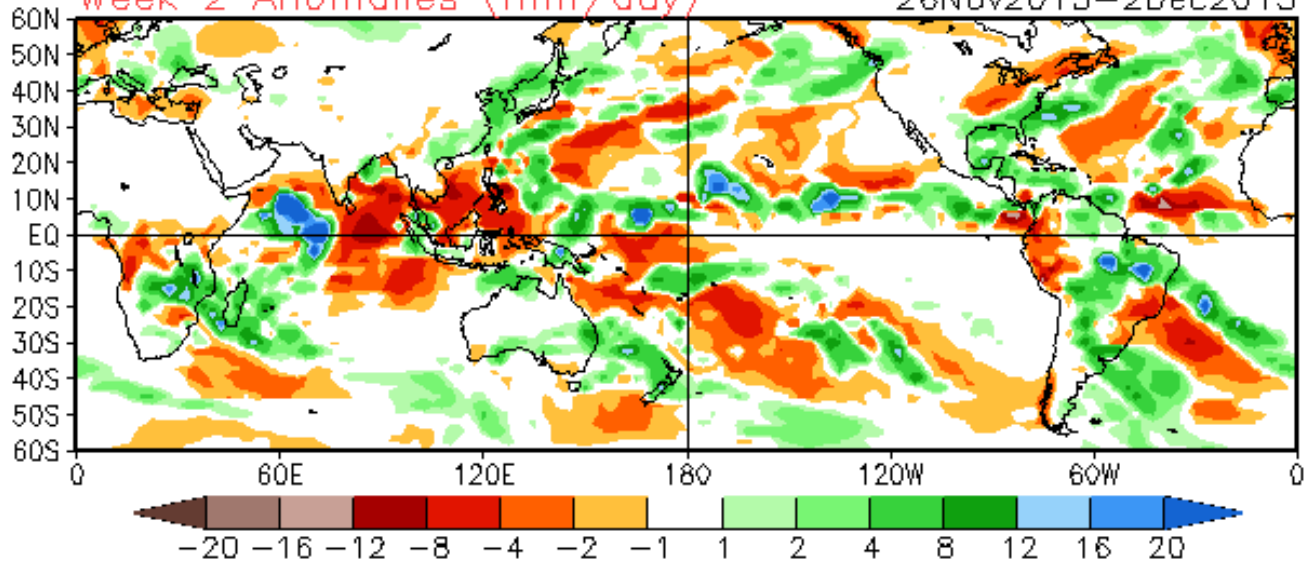
Week 1 Anomalies (mm/day)

19Nov2013–25Nov2013



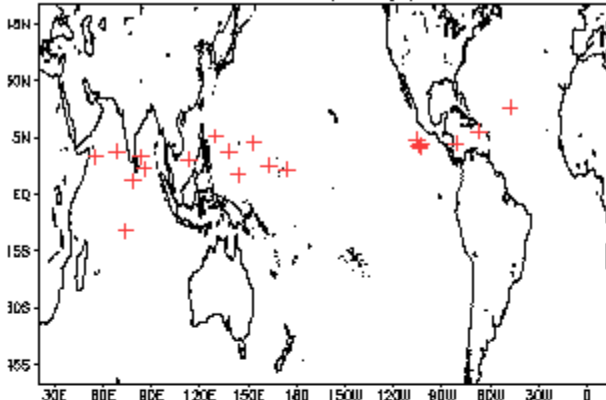
Week 2 Anomalies (mm/day)

26Nov2013–2Dec2013

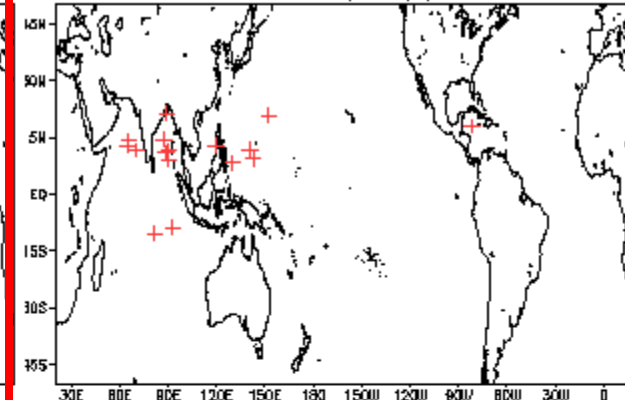


November Tropical Storm Formation by MJO phase

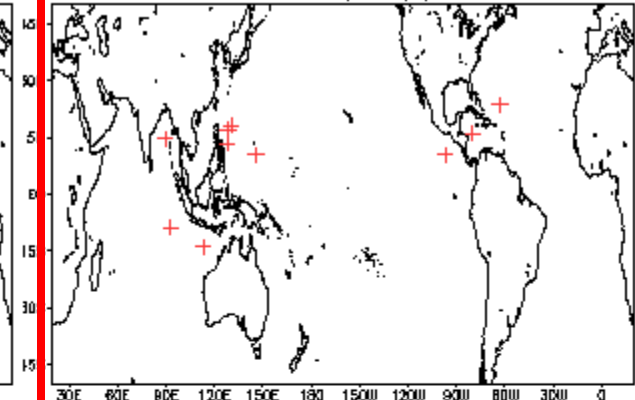
Phase 1 (65 days) 21 storms



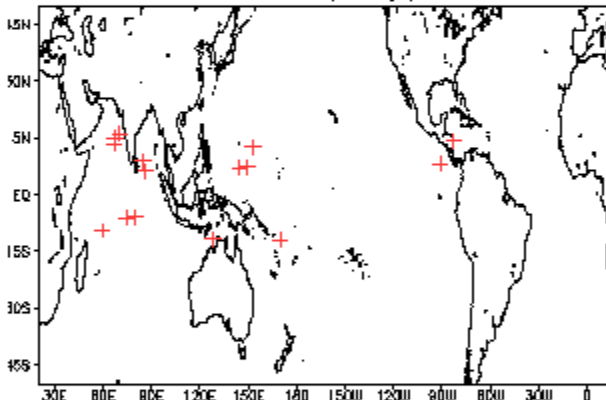
Phase 4 (77 days) 17 storms



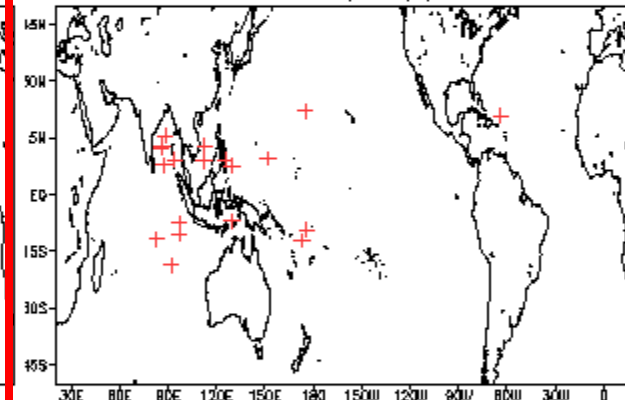
Phase 7 (68 days) 11 storms



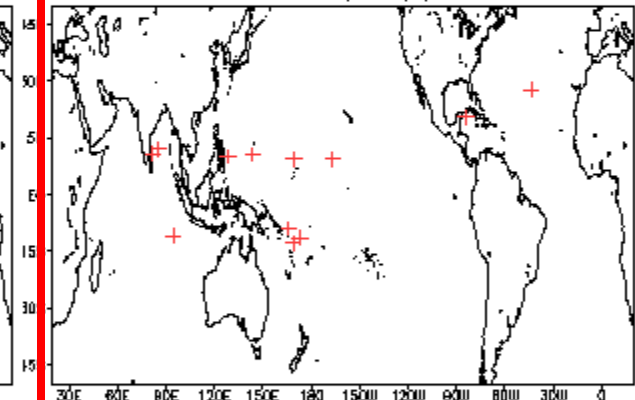
Phase 2 (88 days) 16 storms



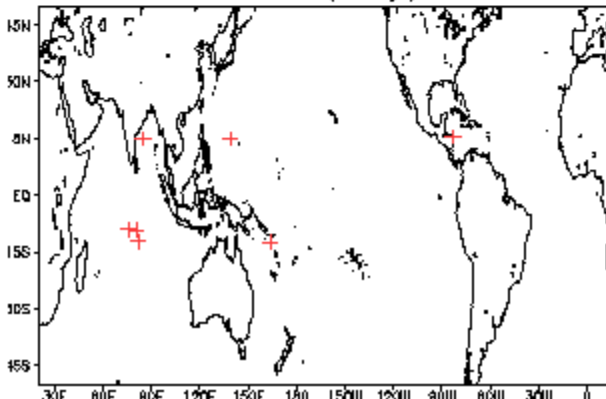
Phase 5 (72 days) 20 storms



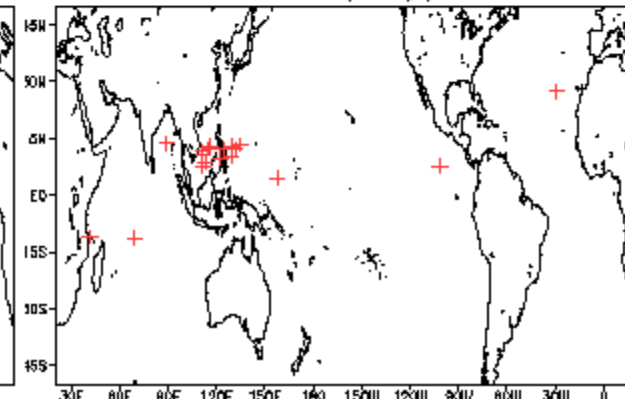
Phase 8 (60 days) 14 storms



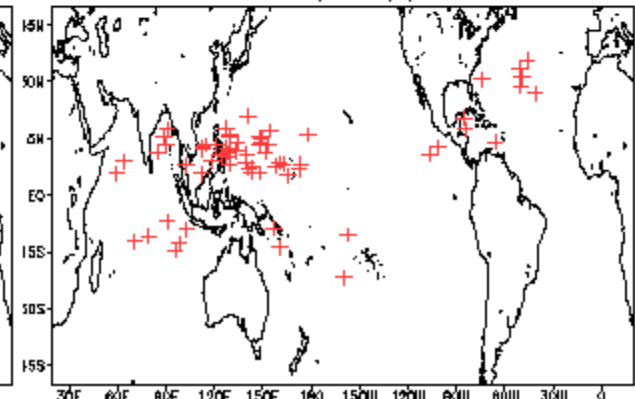
Phase 3 (89 days) 8 storms



Phase 6 (91 days) 19 storms



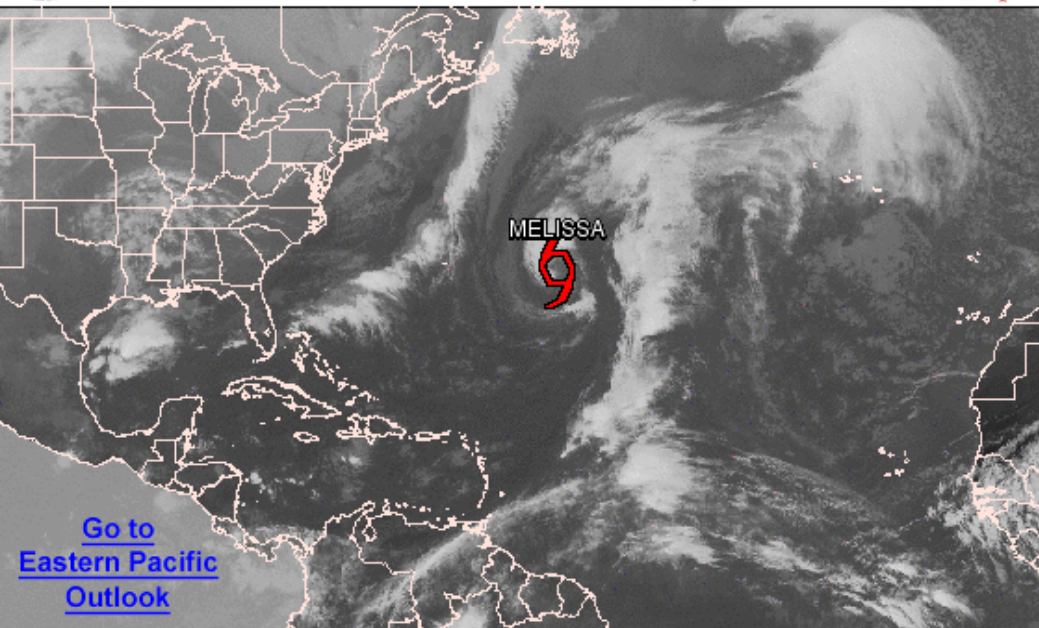
Null (380 days) 65 storms





Graphical Tropical Weather Outlook

National Hurricane Center Miami, Florida



[Go to Eastern Pacific Outlook](#)

700 AM EST TUE NOV 19 2013

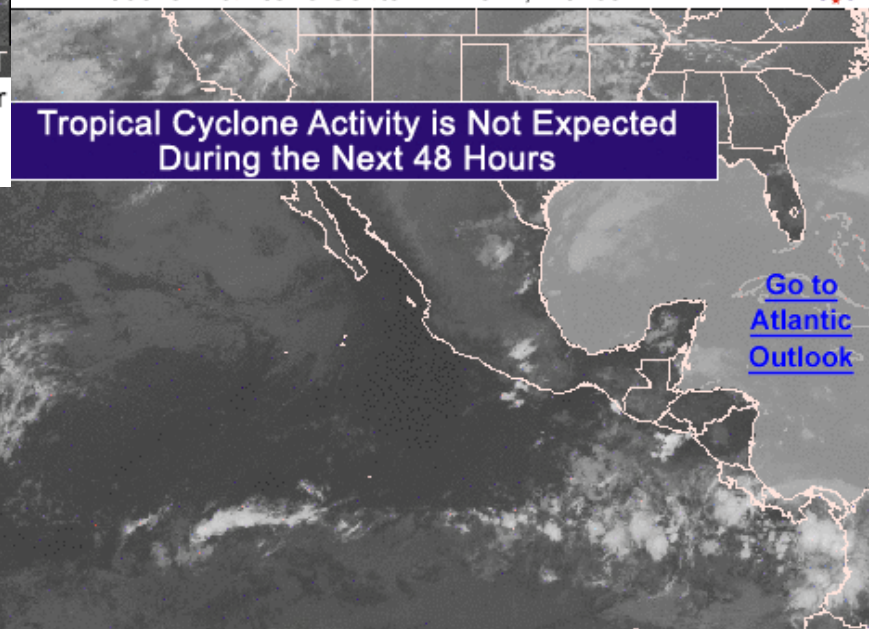
Satellite Image: 0922 AM EST

Outlined areas denote current position of systems discussed in the Tropical Weather Outlook. Color indicates probability of tropical cyclone formation within 48 hours.

Low <30%
 Medium 30-50%
 High >50%

Graphical Tropical Weather Outlook

National Hurricane Center Miami, Florida



Tropical Cyclone Activity is Not Expected During the Next 48 Hours

[Go to Atlantic Outlook](#)

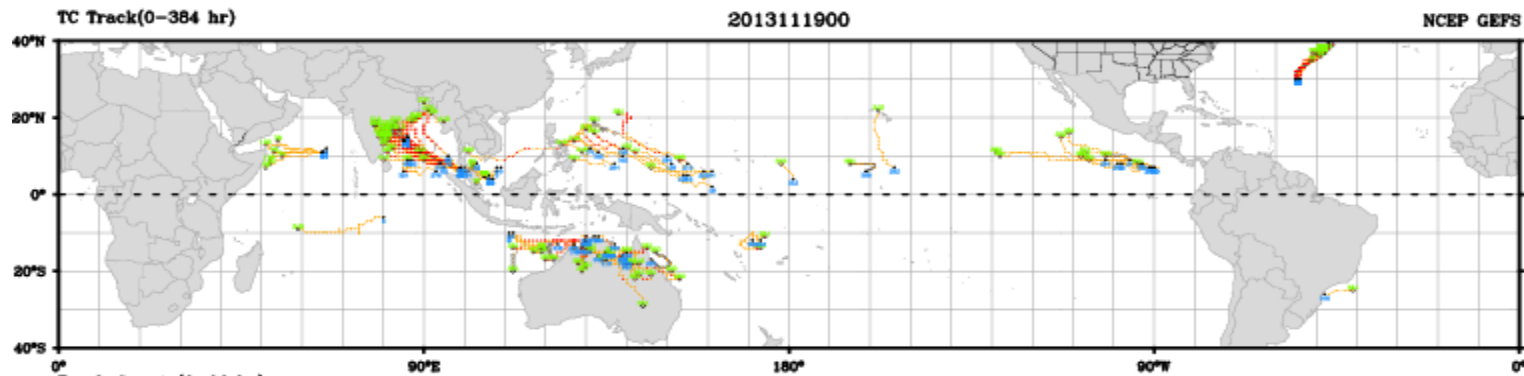
400 AM PST TUE NOV 19 2013

Satellite Image: 0222 AM PST

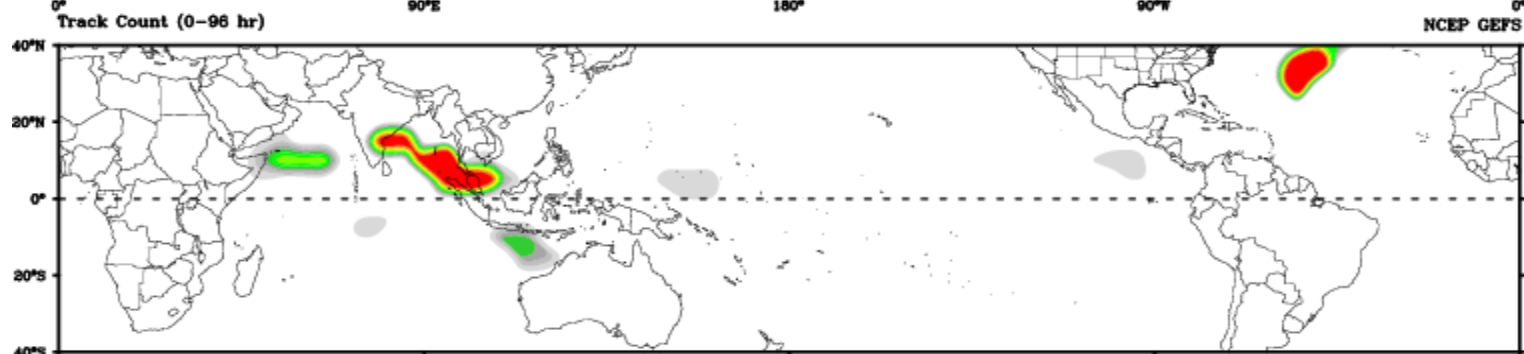
Outlined areas denote current position of systems discussed in the Tropical Weather Outlook. Color indicates probability of tropical cyclone formation within 48 hours.

Low <30%
 Medium 30-50%
 High >50%

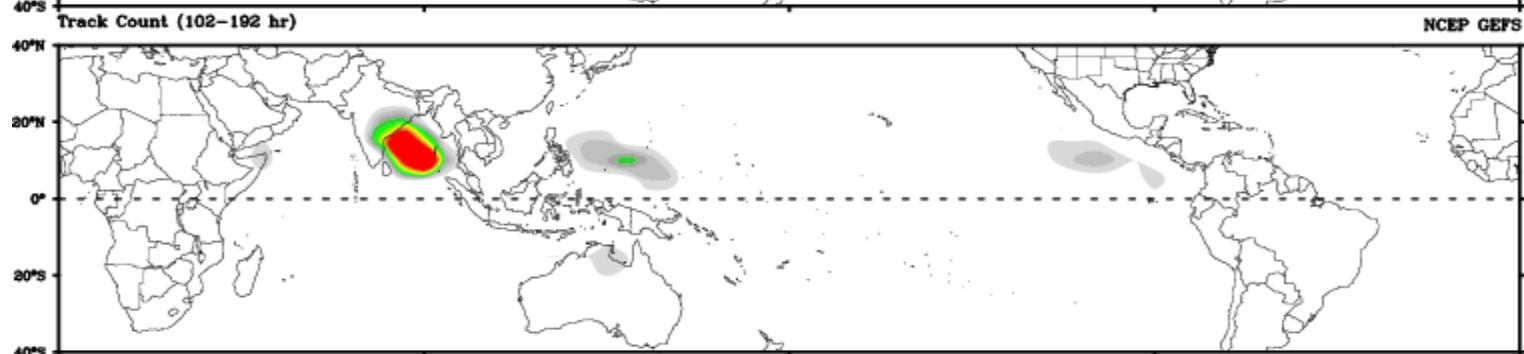
Central Pacific Hurricane Center



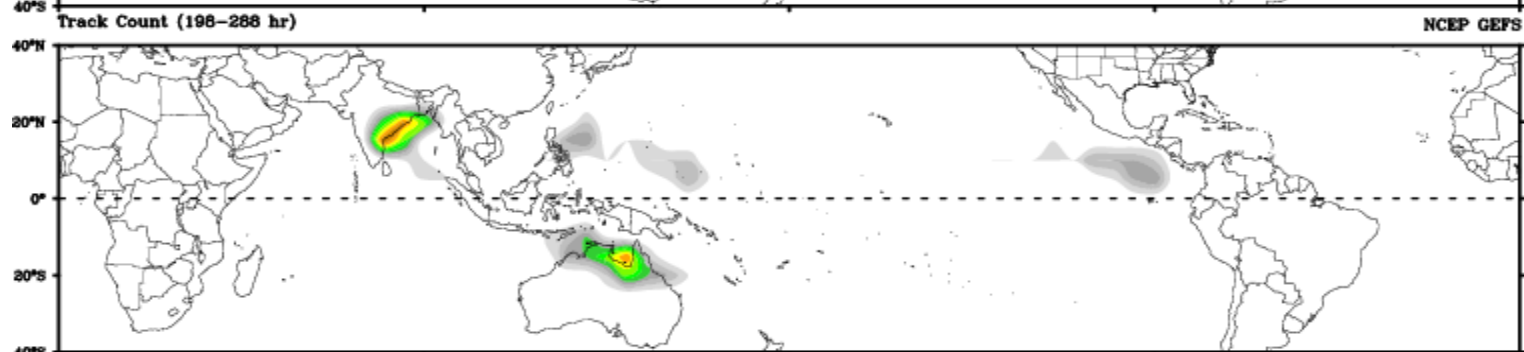
Days 1-4



Day 5-8

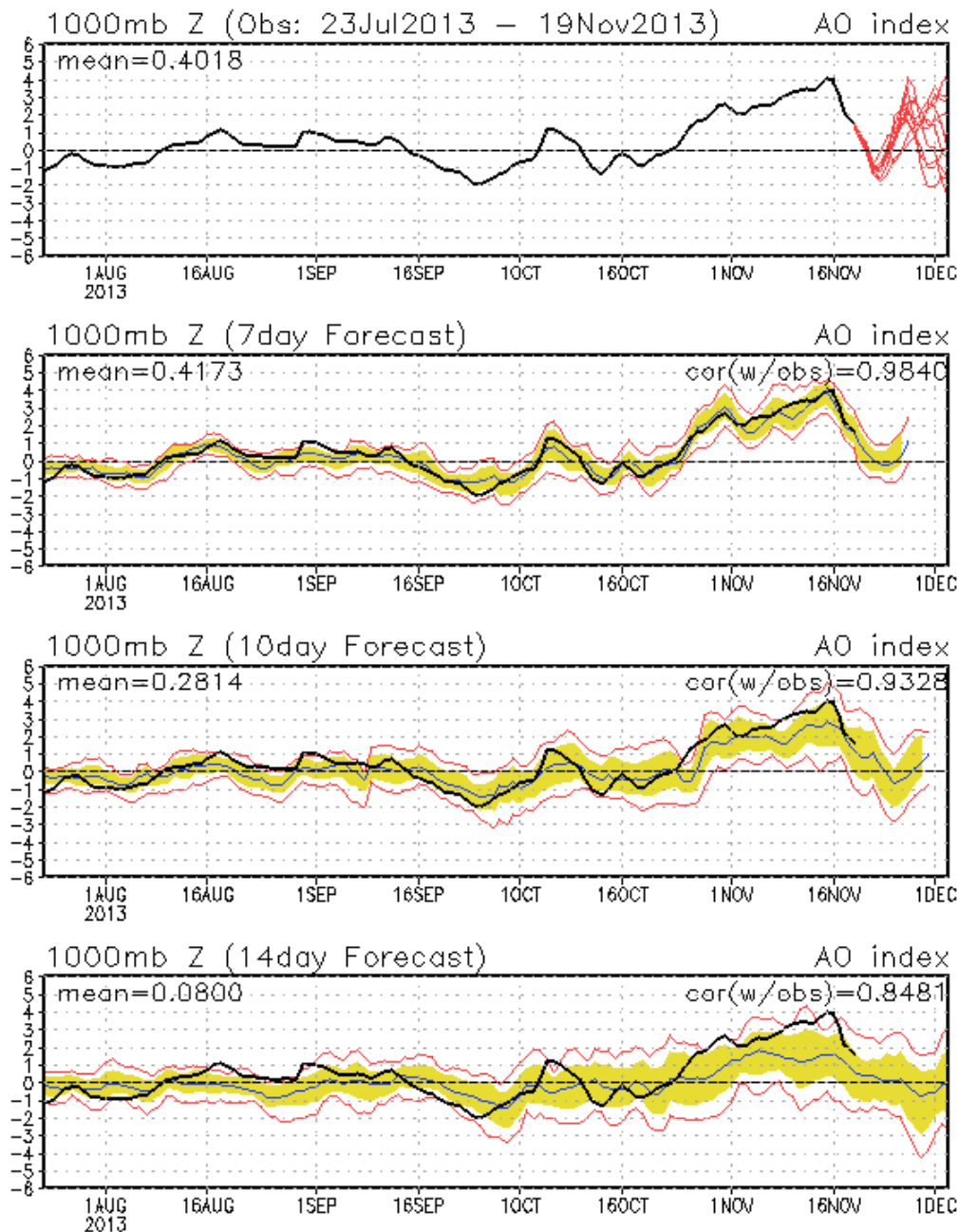


Day 9-12

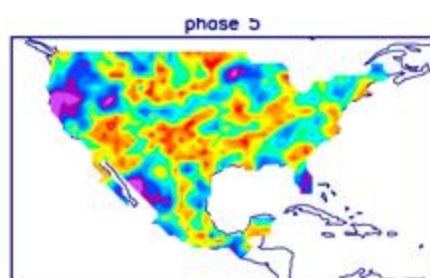
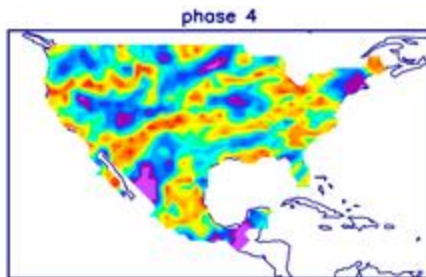
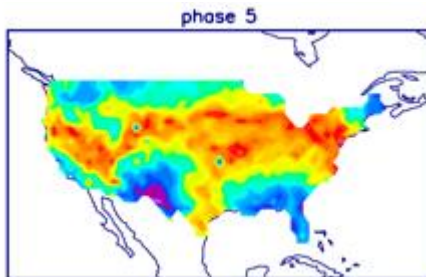
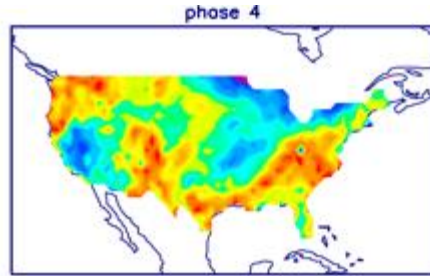


Connections to U.S. Impacts

AO: Observed & ENSM forecasts

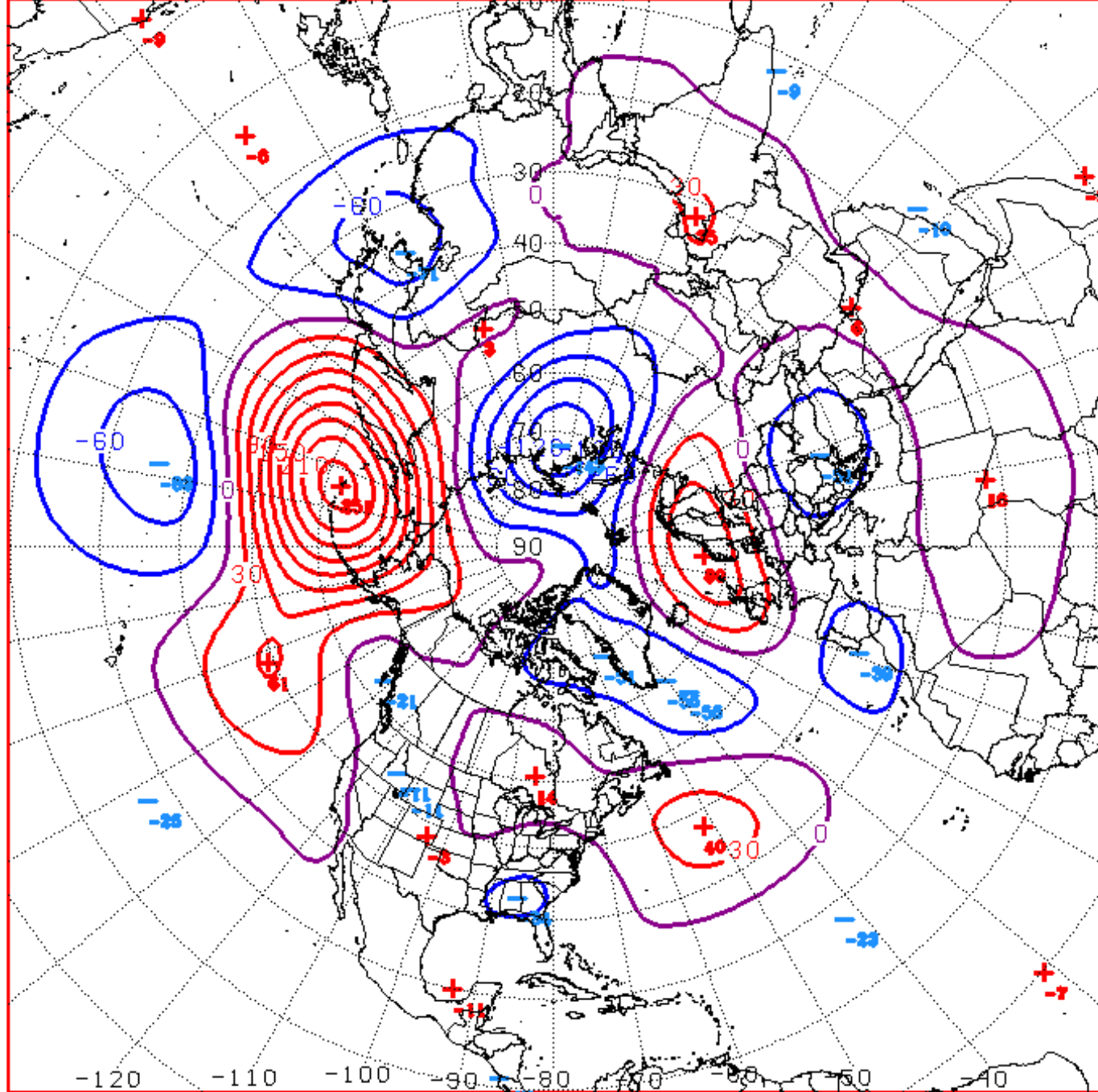


US Composites based on MJO Phase



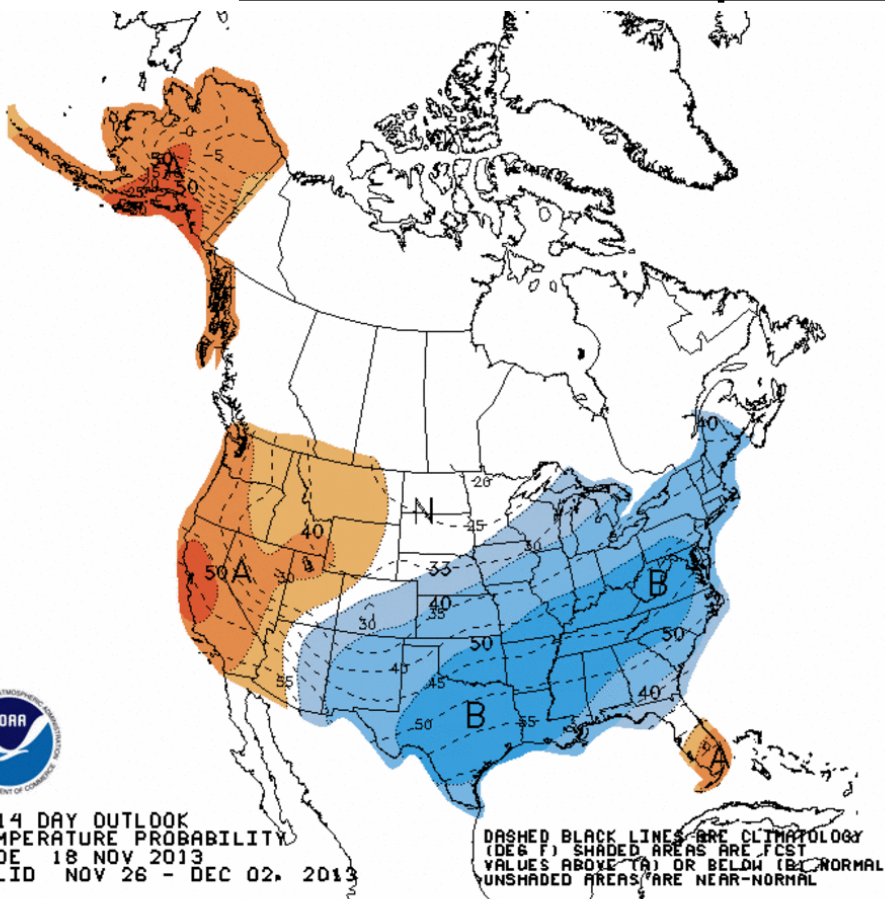
Indicates a shift toward below normal temperatures across the southeastern US, southern CONUS

Phase 4 is associated with above normal precip over the Northeast, phase 5 indicates a shift towards below normal precipitation in the West.



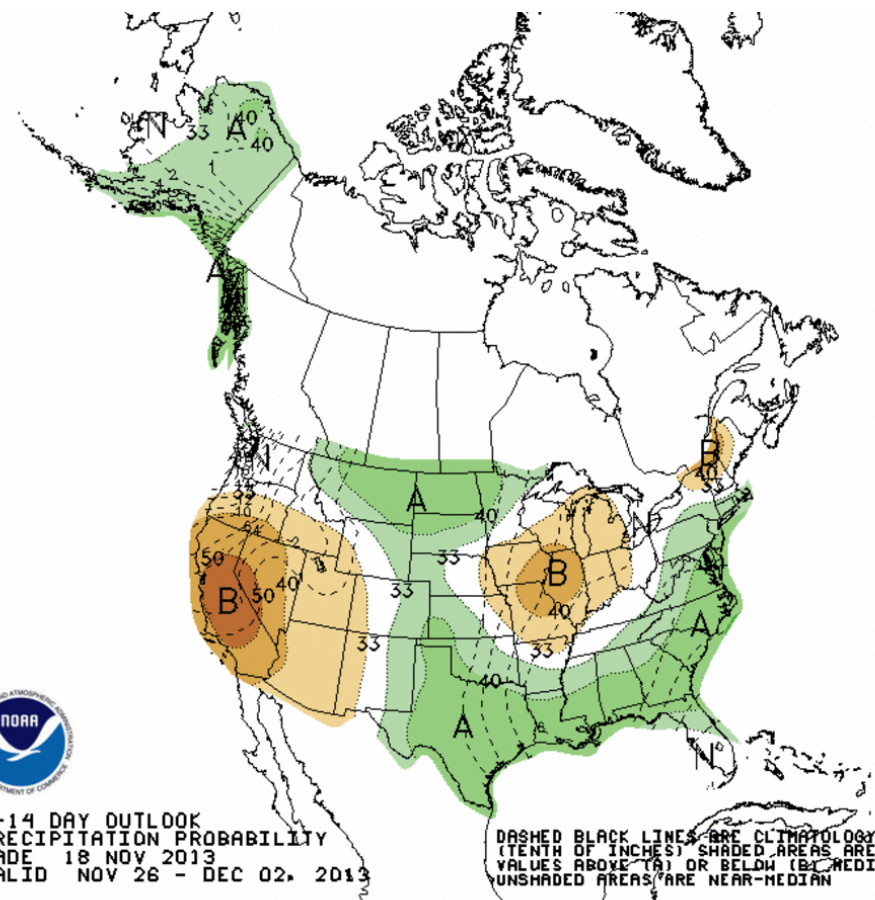
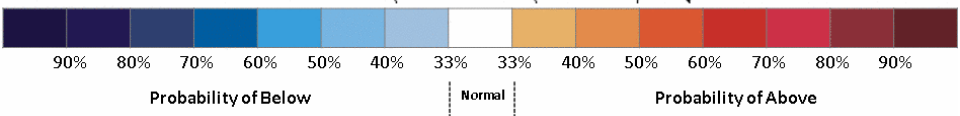
D+11 500 MB ANOMALIES FROM 00Z ECMM
 CPC MAP MADE NOV 19 2013 1048 UTC CNTD NOV 30 2013

Week 2 – Temperature and Precipitation



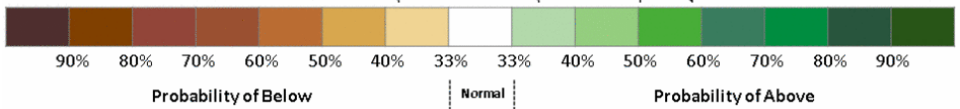
8-14 DAY OUTLOOK
TEMPERATURE PROBABILITY
MADE 18 NOV 2013
VALID NOV 26 - DEC 02, 2013

DASHED BLACK LINES ARE CLIMATE
(DEG F) SHADED AREAS ARE FCST
VALUES ABOVE (A) OR BELOW (B) NORMAL
UNSHADED AREAS ARE NEAR-NORMAL



8-14 DAY OUTLOOK
PRECIPITATION PROBABILITY
MADE 18 NOV 2013
VALID NOV 26 - DEC 02, 2013

DASHED BLACK LINES ARE CLIMATE
(TENTH OF INCHES) SHADED AREAS ARE FCST
VALUES ABOVE (A) OR BELOW (B) MEDIAN
UNSHADED AREAS ARE NEAR-MEDIAN

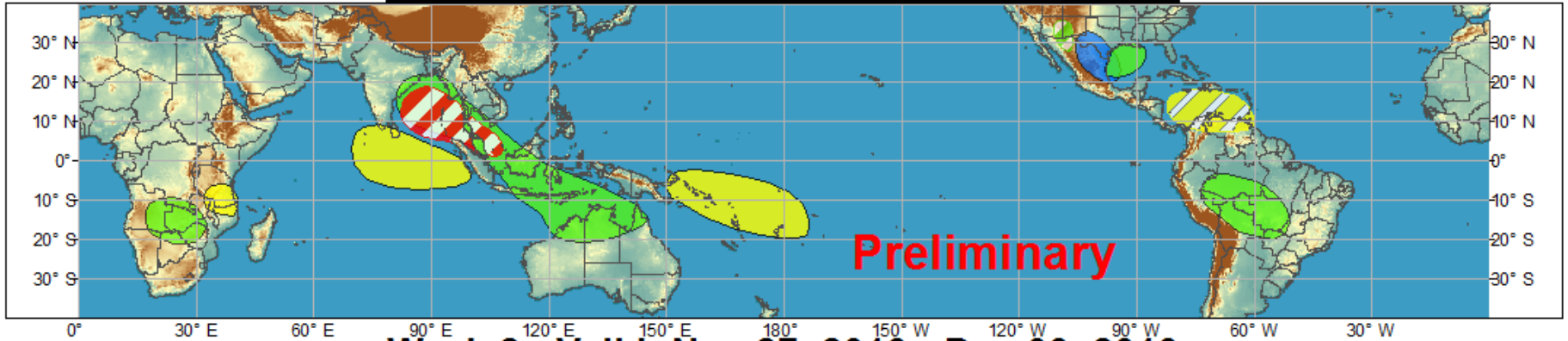




Global Tropics Hazards and Benefits Outlook - Climate Prediction Center



Week 1 - Valid: Nov 20, 2013 - Nov 26, 2013



Week 2 - Valid: Nov 27, 2013 - Dec 03, 2013



Confidence
High Moderate

- Tropical Cyclone Formation**
- Above-average rainfall**
- Below-average rainfall**
- Above-normal temperatures**
- Below-normal temperatures**



- Development of a tropical cyclone that eventually reaches tropical storm/cyclone strength.
- Weekly total rainfall in the upper third of the historical range.
- Weekly total rainfall in the lower third of the historical range.
- 7-day mean temperatures in the upper third of the historical range.
- 7-day mean temperatures in the lower third of the historical range.

Produced: 11/19/2013
Forecaster: Allgood

Product is updated once per week. The product targets broad scale conditions integrated over a 7-day period for US interests only. Consult your local responsible forecast agency.

