

Global Tropics Hazards And Benefits Outlook

September 4, 2012

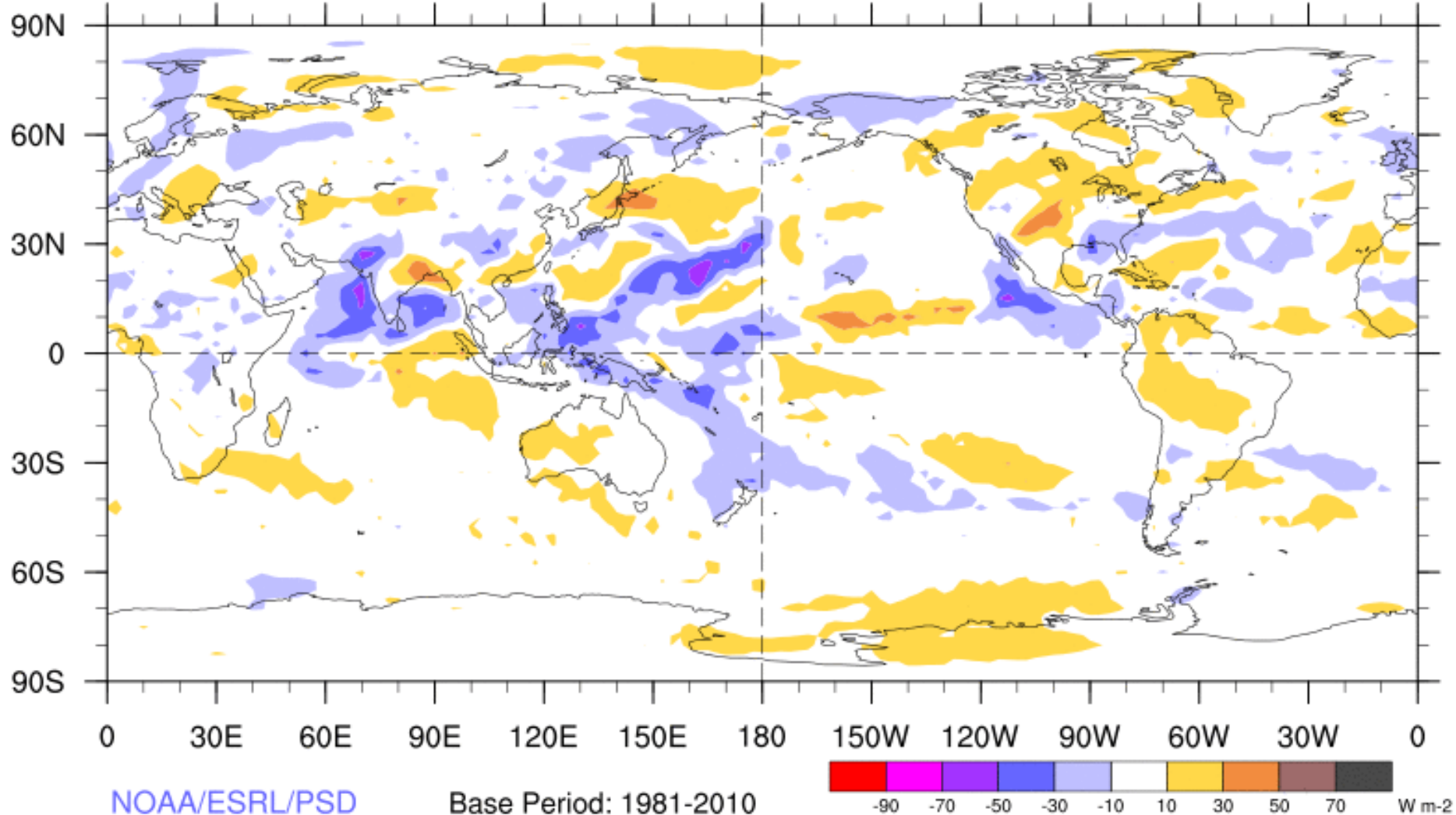
Brad Pugh

Outline

1. Review of Recent Conditions
2. Synopsis of Climate Modes
3. GTH Outlook and Forecast Discussion

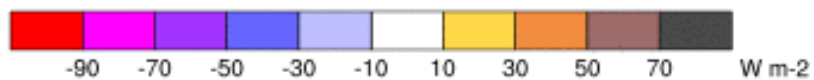
7-Day Average OLR Anomaly

2012/08/27 - 2012/09/02



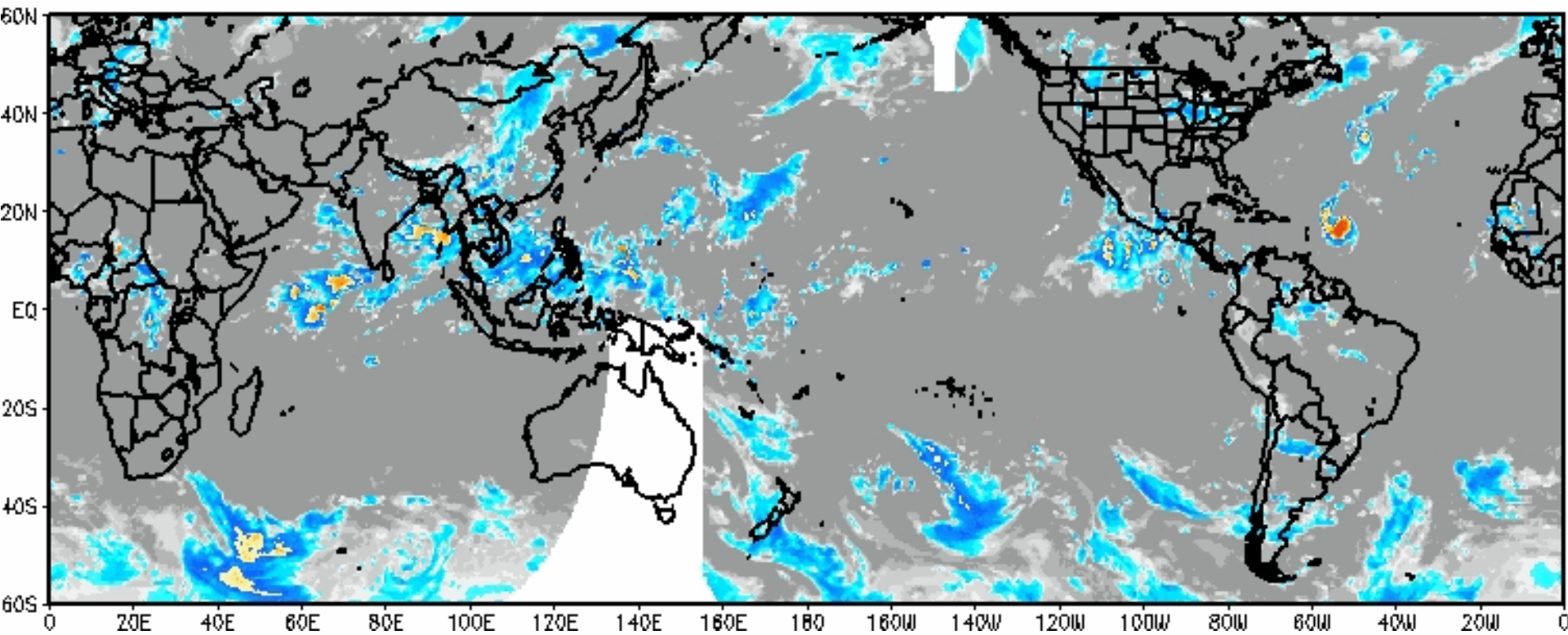
NOAA/ESRL/PSD

Base Period: 1981-2010



Weekly Satellite Review

IR Temperatures
0900 UTC 01 SEP 2012

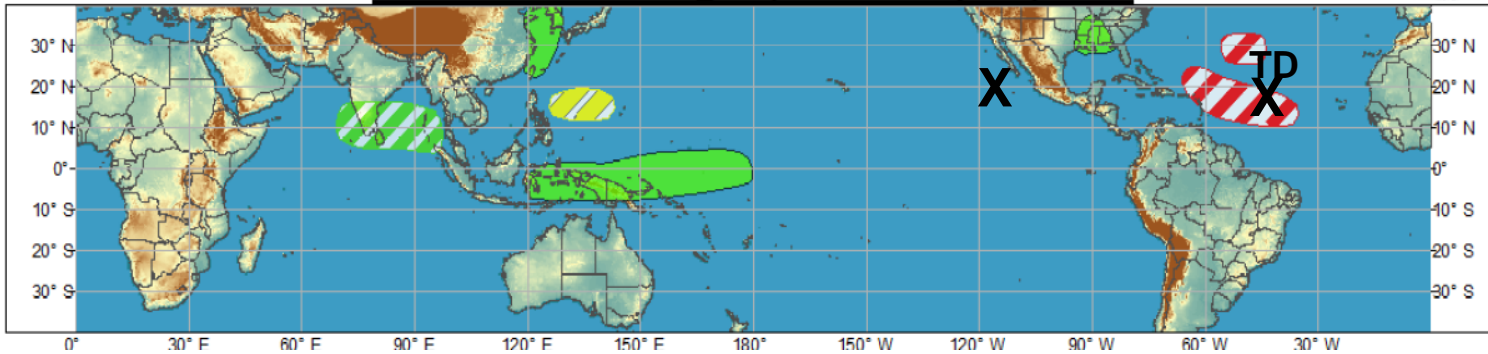




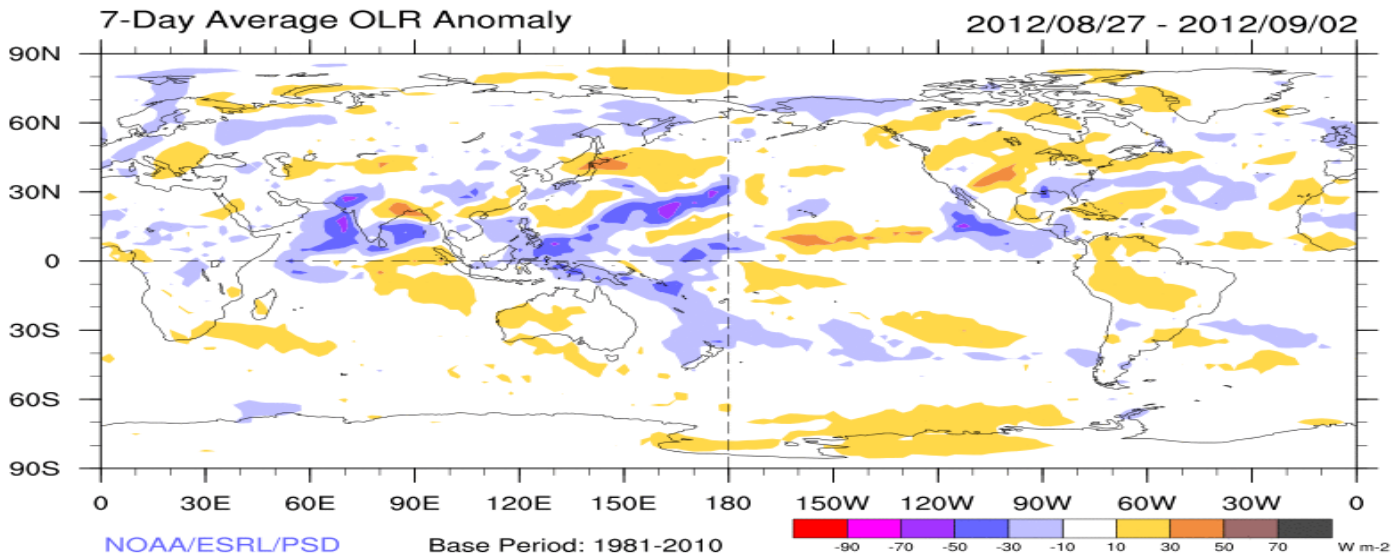
Global Tropical Hazards/Benefits Outlook - Climate Prediction Center



Week 1 - Valid: Aug 29, 2012 - Sep 04, 2012



Week 2 - Valid: Aug 29, 2012 - Sep 04, 2012



Synopsis of Climate Modes

ENSO:

--ENSO-neutral conditions but chances increasing for El Nino. El Niño conditions are likely to develop during September 2012.

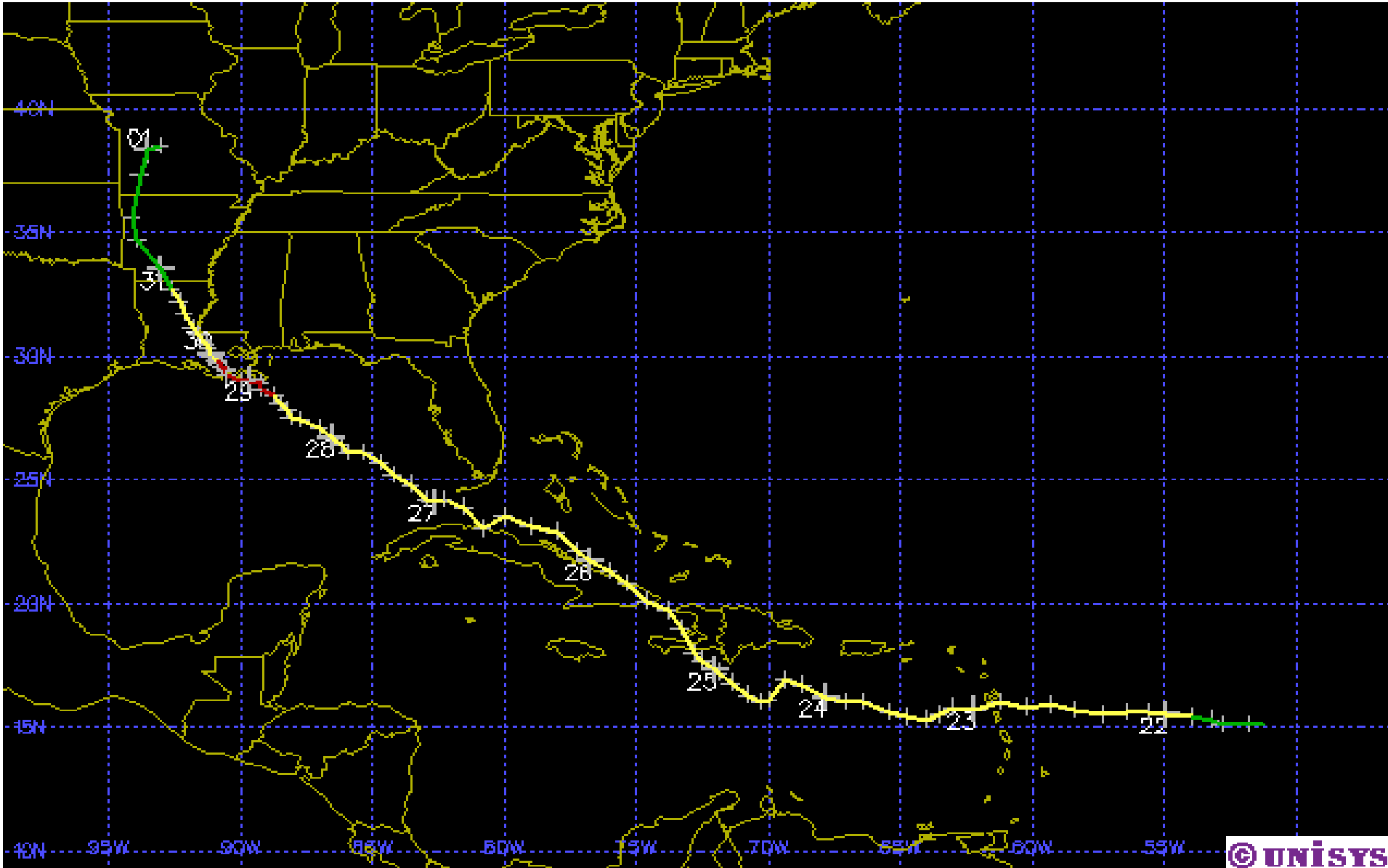
MJO:

--The MJO began to weaken during the past week.

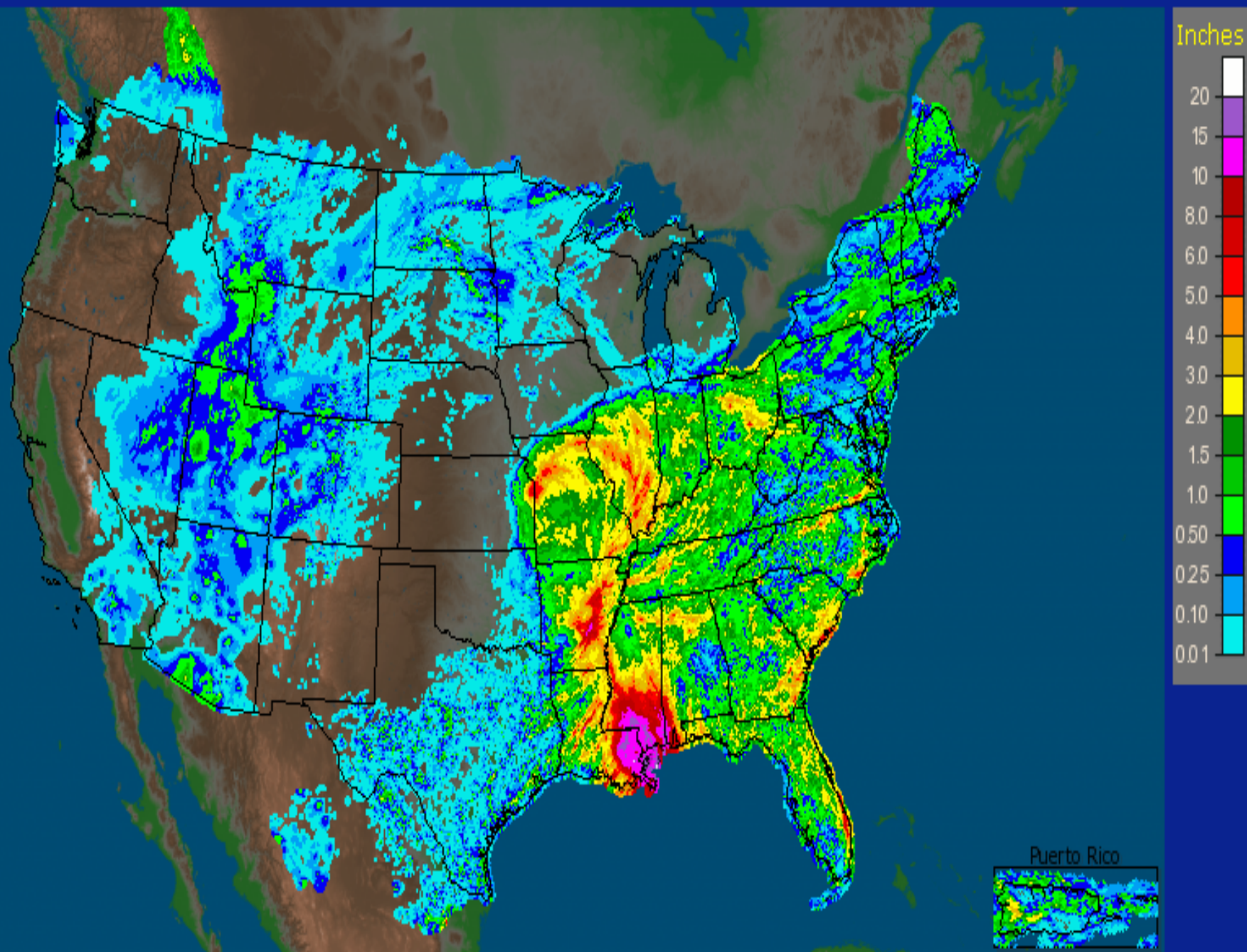
--Most models indicate a weak, incoherent signal during the next 2 weeks.

Extratropics:

--Heavy rainfall (Isaac) across drought-stricken areas of AR, MO, IL, IN.

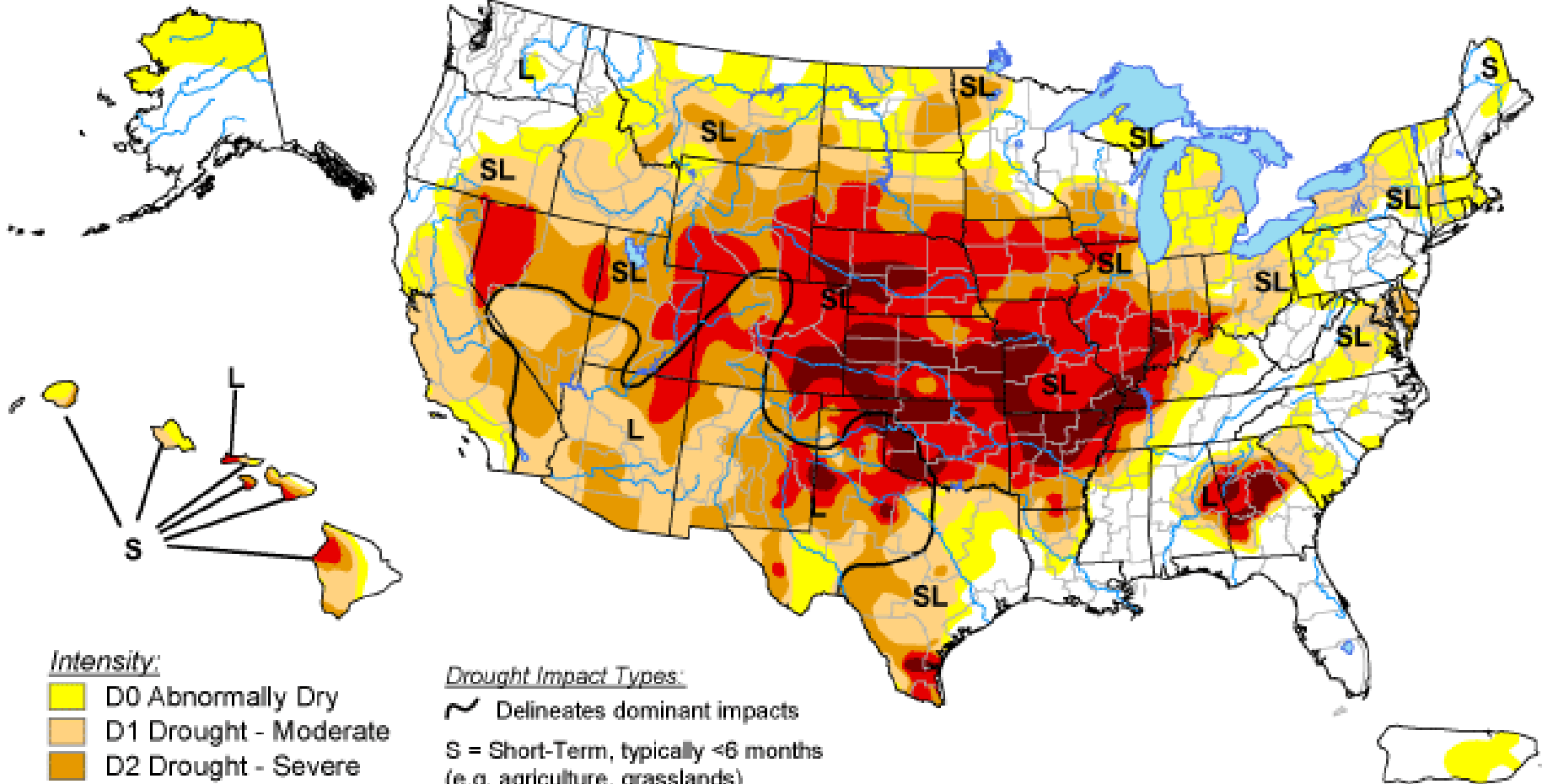


CONUS + Puerto Rico: Current 7-Day Observed Precipitation
Valid at 9/3/2012 1200 UTC - Created 9/3/12 22:29 UTC








U.S. Drought Monitor


August 28, 2012
Valid 7 a.m. EDT



Intensity:

-  D0 Abnormally Dry
-  D1 Drought - Moderate
-  D2 Drought - Severe
-  D3 Drought - Extreme
-  D4 Drought - Exceptional

Drought Impact Types:

-  Delineates dominant impacts
- S = Short-Term, typically <6 months
(e.g. agriculture, grasslands)
- L = Long-Term, typically >6 months
(e.g. hydrology, ecology)

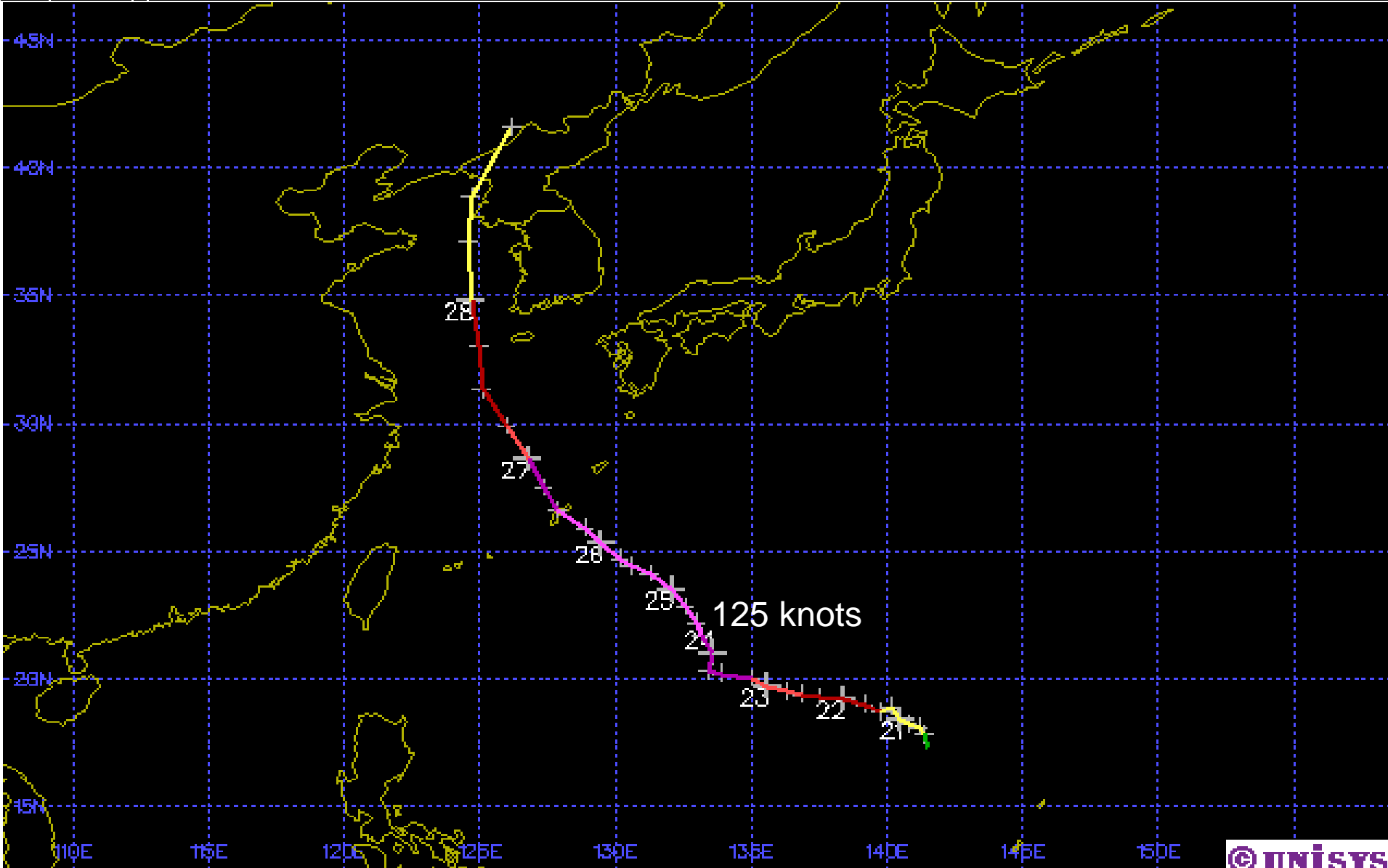
The Drought Monitor focuses on broad-scale conditions.
Local conditions may vary. See accompanying text summary
for forecast statements.

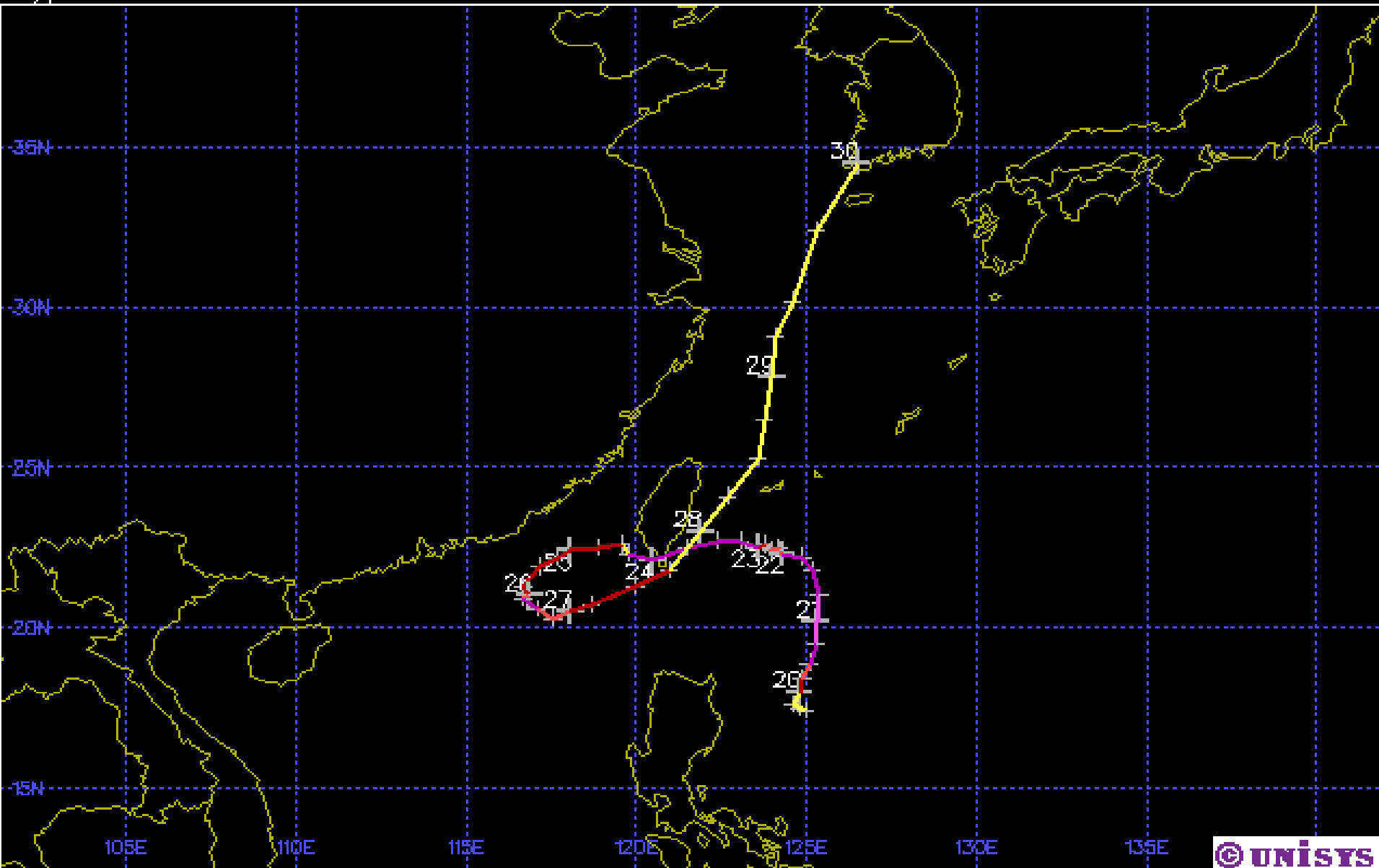


Released Thursday, August 30, 2012

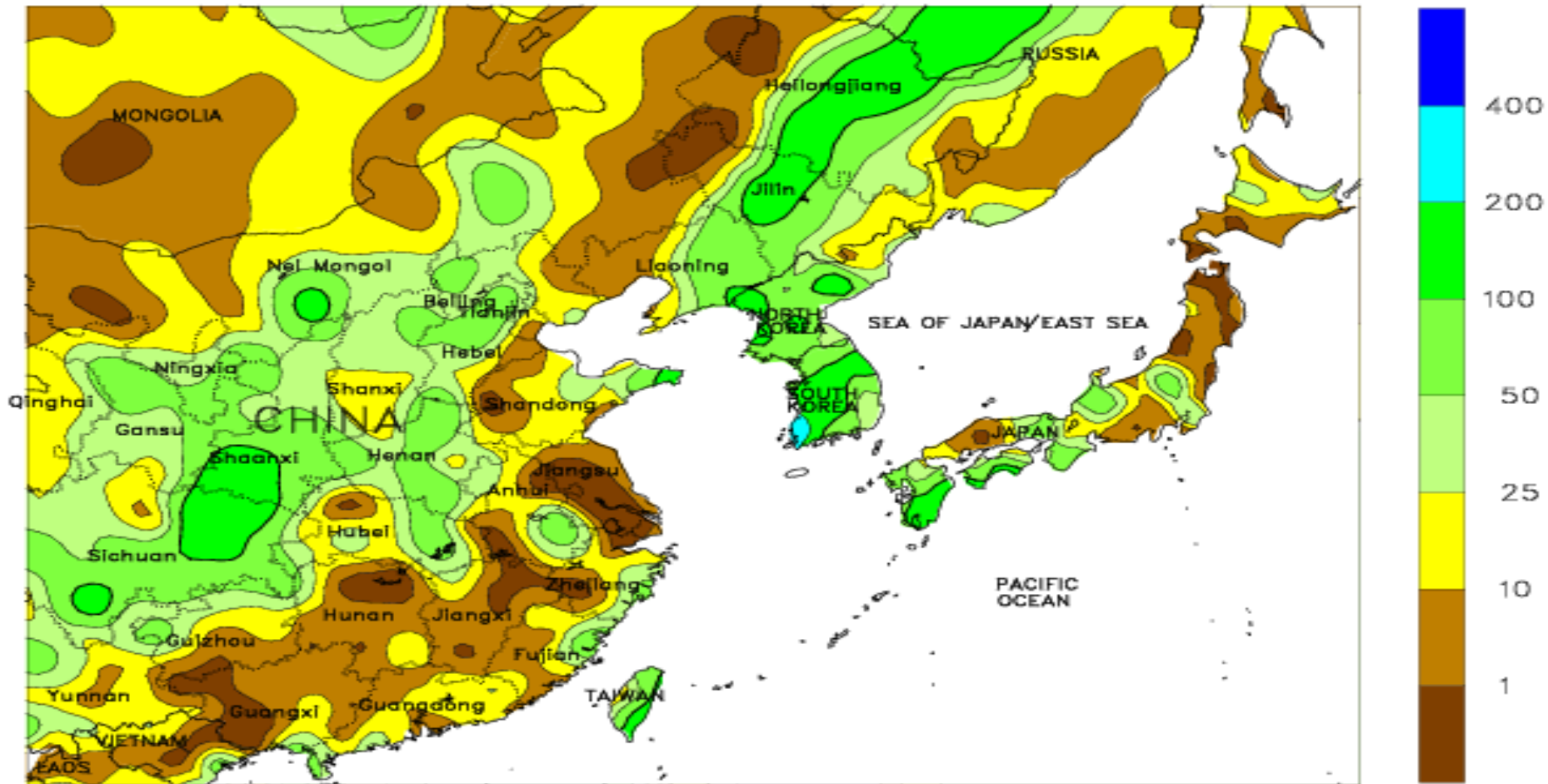
Author: Brian Fuchs, National Drought Mitigation Center

<http://droughtmonitor.unl.edu/>





EASTERN ASIA
Total Precipitation (mm)
AUG 26 - SEP 1, 2012



CLIMATE PREDICTION CENTER, NOAA
Computer generated contours
Based on preliminary data



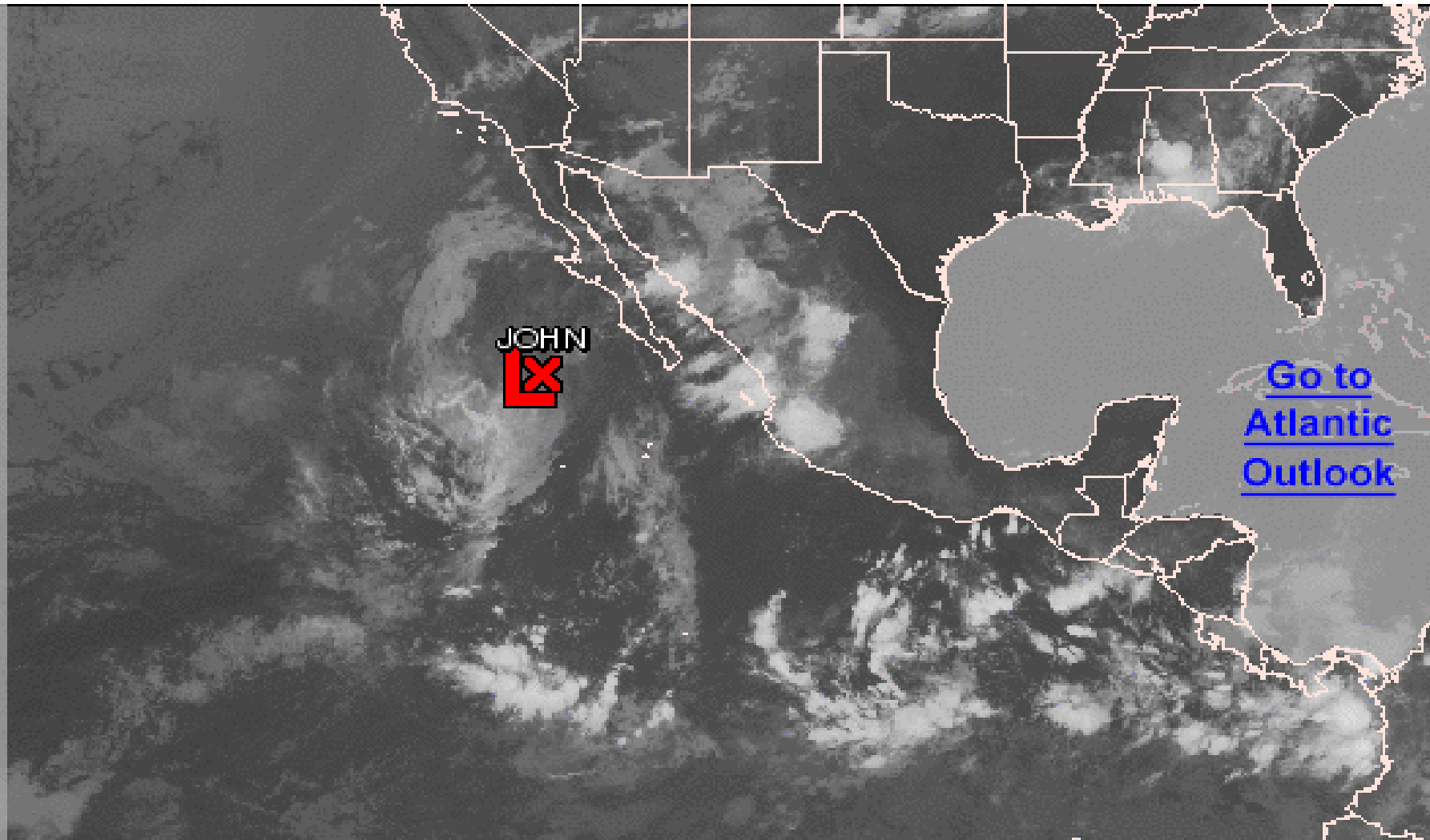


Graphical Tropical Weather Outlook

National Hurricane Center Miami, Florida



[Go to Central Pacific Hurricane Center](#)



500 AM PDT TUE SEP 4 2012

Satellite Image: 0400 AM PDT

Outlined areas denote current position of systems discussed in the Tropical Weather Outlook. Color indicates probability of tropical cyclone formation within 48 hours.

 Low <30%

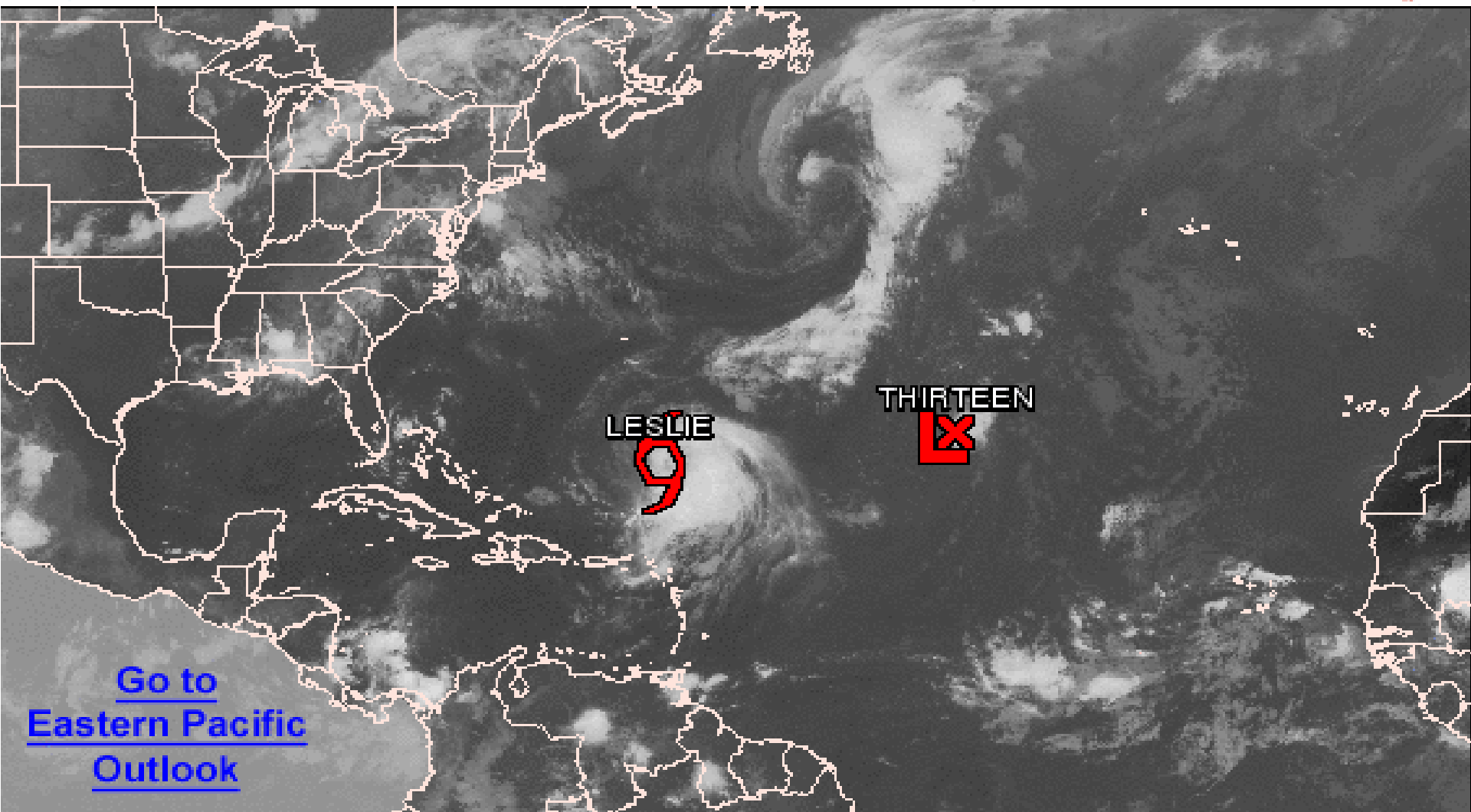
 Medium 30-50%

 High >50%



Graphical Tropical Weather Outlook

National Hurricane Center Miami, Florida



[Go to Eastern Pacific Outlook](#)

800 AM EDT TUE SEP 4 2012

Satellite Image: 0700 AM EDT

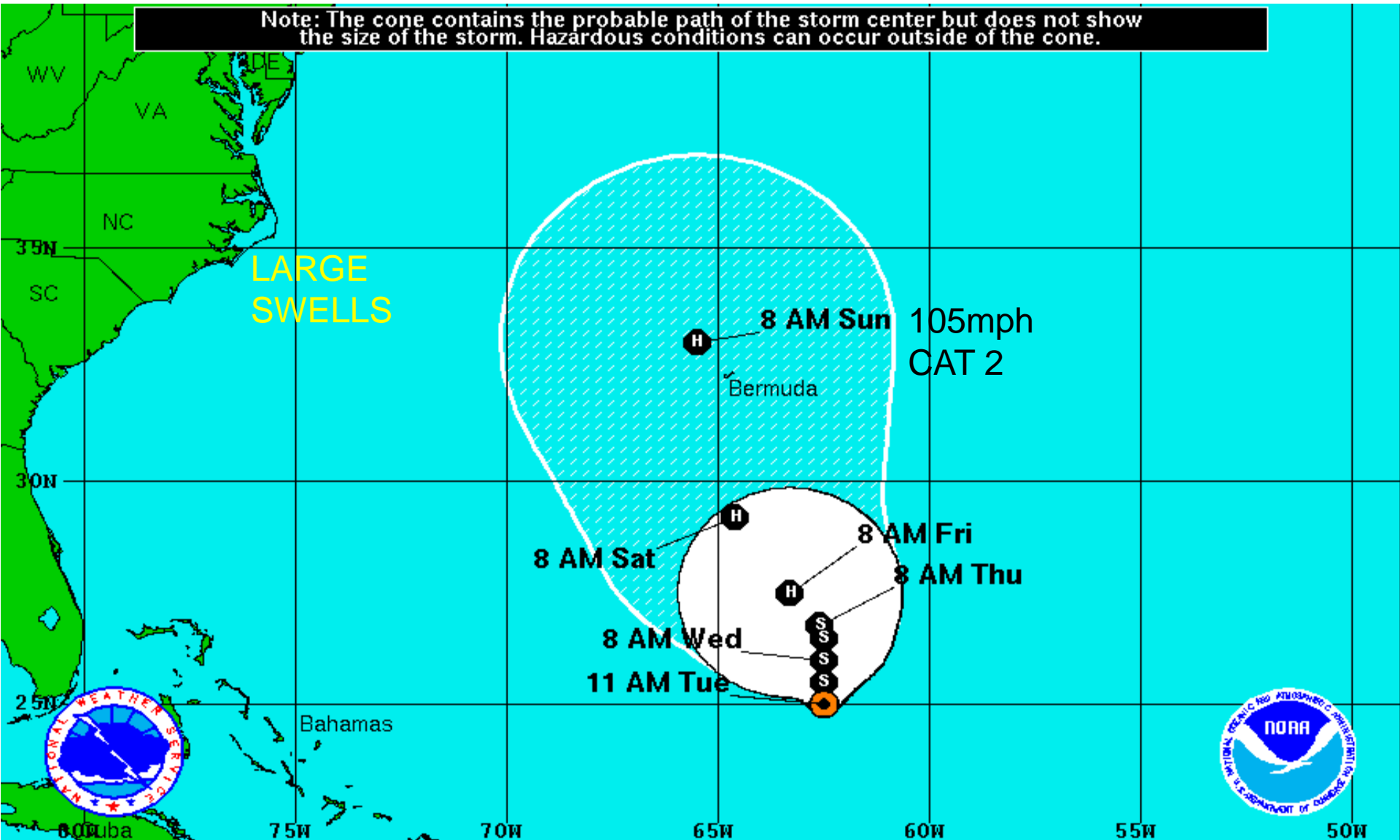
Outlined areas denote current position of systems discussed in the Tropical Weather Outlook. Color indicates probability of tropical cyclone formation within 48 hours.

Low <30%


Medium 30-50%



High >50%

Note: The cone contains the probable path of the storm center but does not show the size of the storm. Hazardous conditions can occur outside of the cone.



Tropical Storm Leslie
 Tuesday September 4, 2012
 11 AM EDT Advisory 21
 NWS National Hurricane Center

Current Information: 
 Center Location 25.0 N 62.5 W
 Max Sustained Wind 65 mph
 Movement N at 3 mph

Forecast Positions:
 Tropical Cyclone  Post-Tropical
 Sustained Winds: D < 39 mph
 S 39-73 mph H 74-110 mph M > 110mph

Potential Track Area:
 Day 1-3  Day 4-5

Watches:
 Hurricane  Trop.Storm

Warnings:
 Hurricane  Trop.Storm



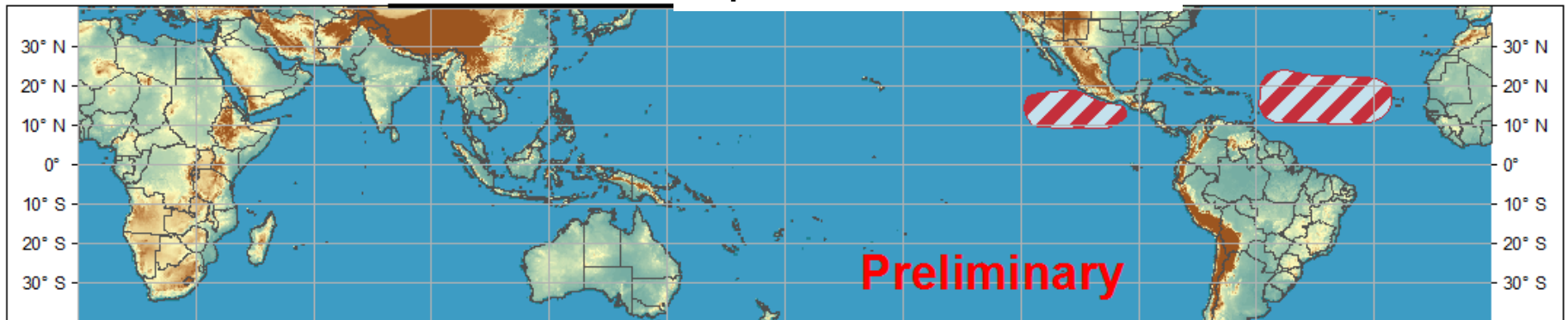
Global Tropical Hazards/Benefits Outlook - Climate Prediction Center



Week 1 - Valid: Sep 06, 2012 - Sep 12, 2012



Week 2 - Valid: Sep 12-18



Confidence
High Moderate

Tropical Cyclone Formation



Development of a tropical cyclone that eventually reaches tropical storm/cyclone strength.

Above-average rainfall



Weekly total rainfall in the upper third of the historical range.

Below-average rainfall



Weekly total rainfall in the lower third of the historical range.

Above-normal temperatures



7-day mean temperatures in the upper third of the historical range.

Below-normal temperatures



7-day mean temperatures in the lower third of the historical range.

Produced: 09/04/2012

Forecaster: Pugh

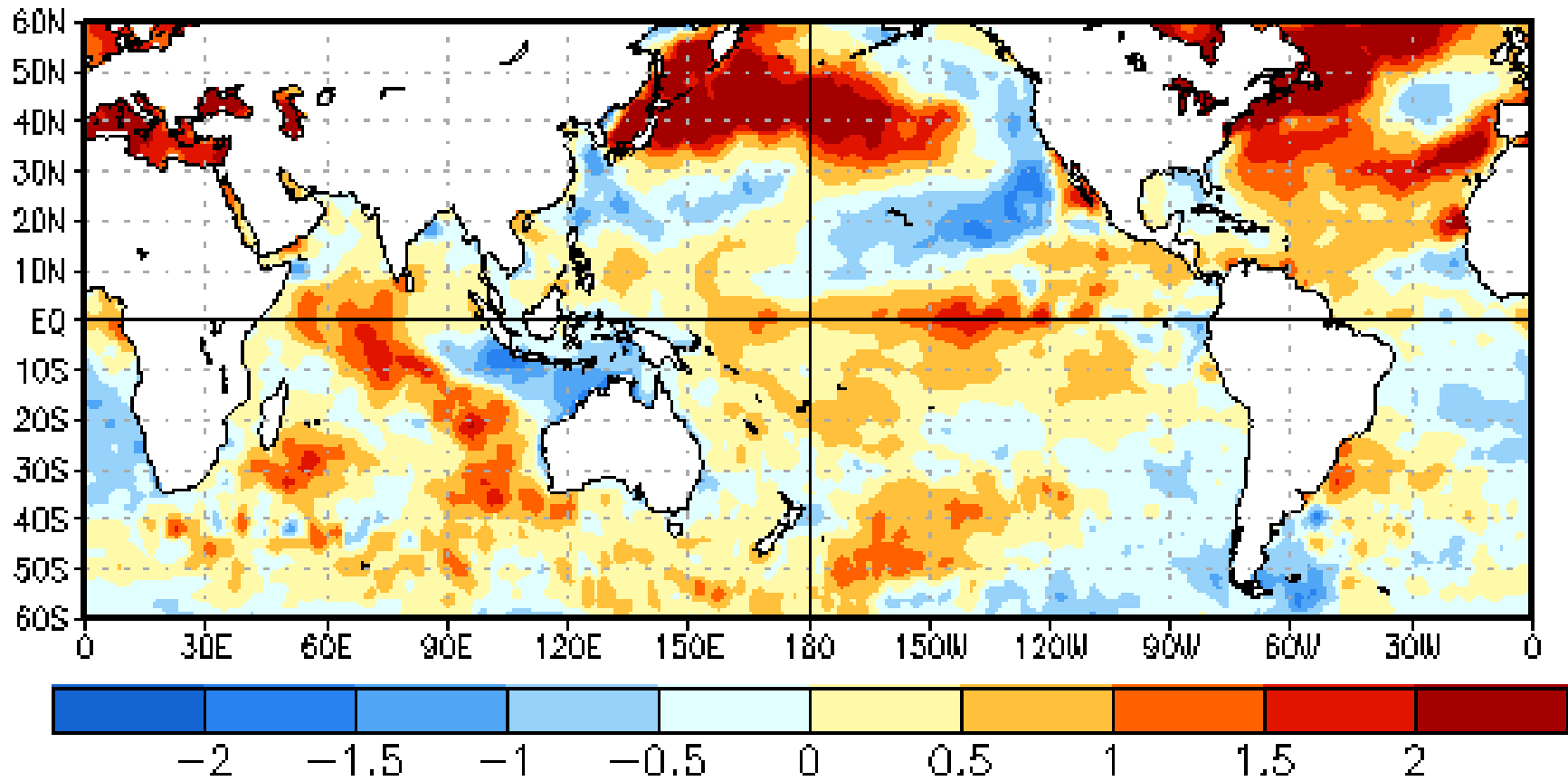
Product is updated once per week. The product targets broad scale conditions integrated over a 7-day period for US interests only. Consult your local responsible forecast agency.



SST Observations

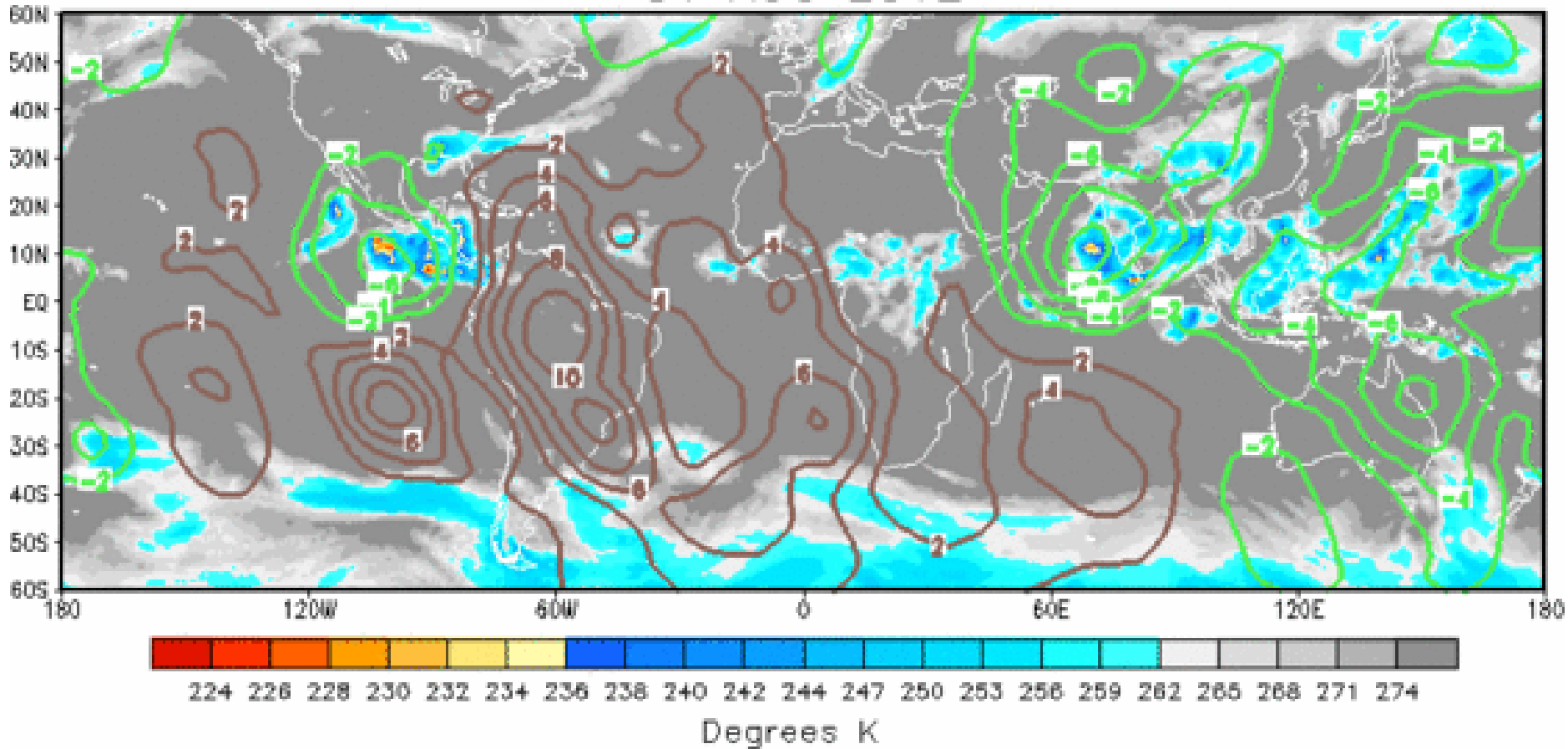
SST Anomalies (°C)

29 AUG 2012



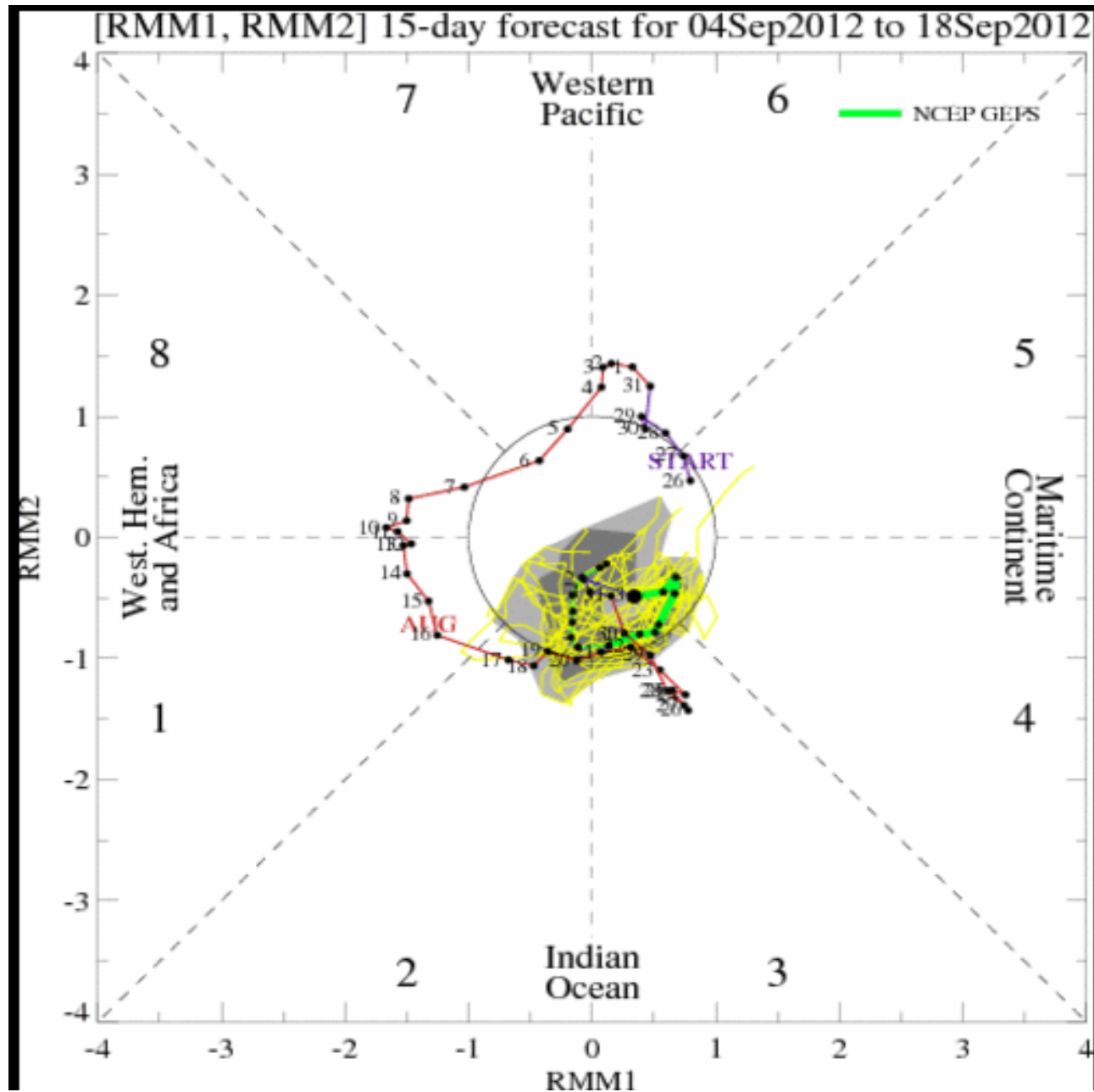
IR Satellite & 200-hpa Velocity Potential Anomalies

31 AUG 2012

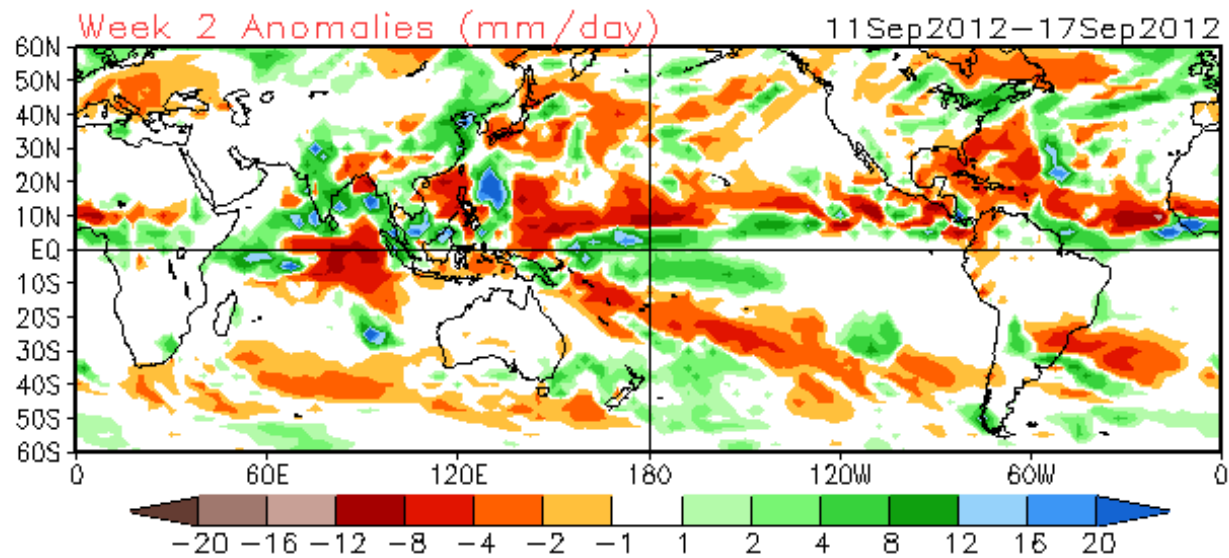
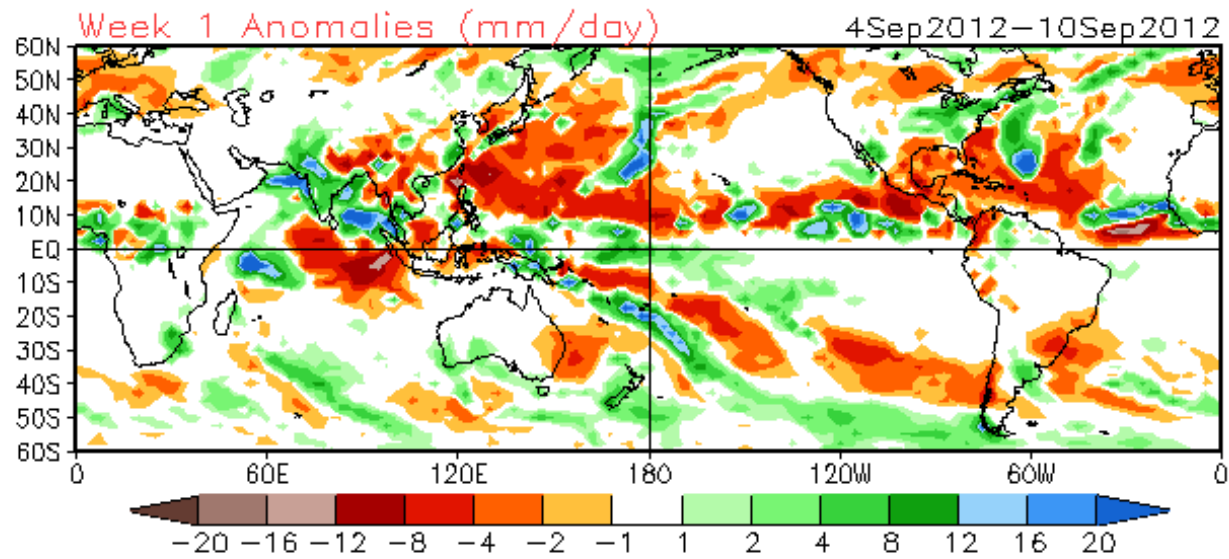


Green: Enhanced Convection
Brown: Suppressed Convection

MJO Observation/Forecast

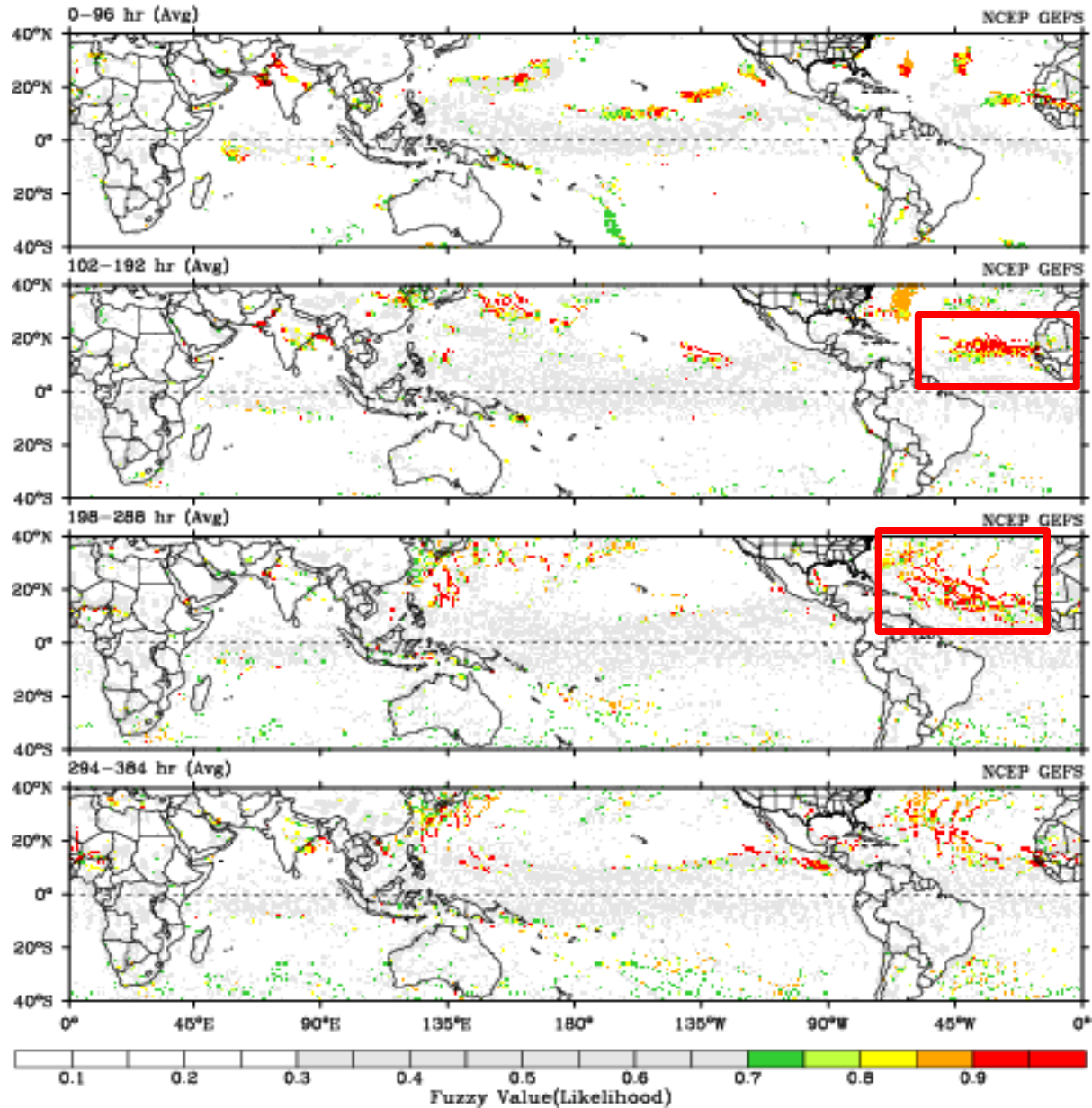


CFSv2 Weeks 1 & 2 Precipitation
16 Member Ensemble Mean Forecast from 03Sep2012

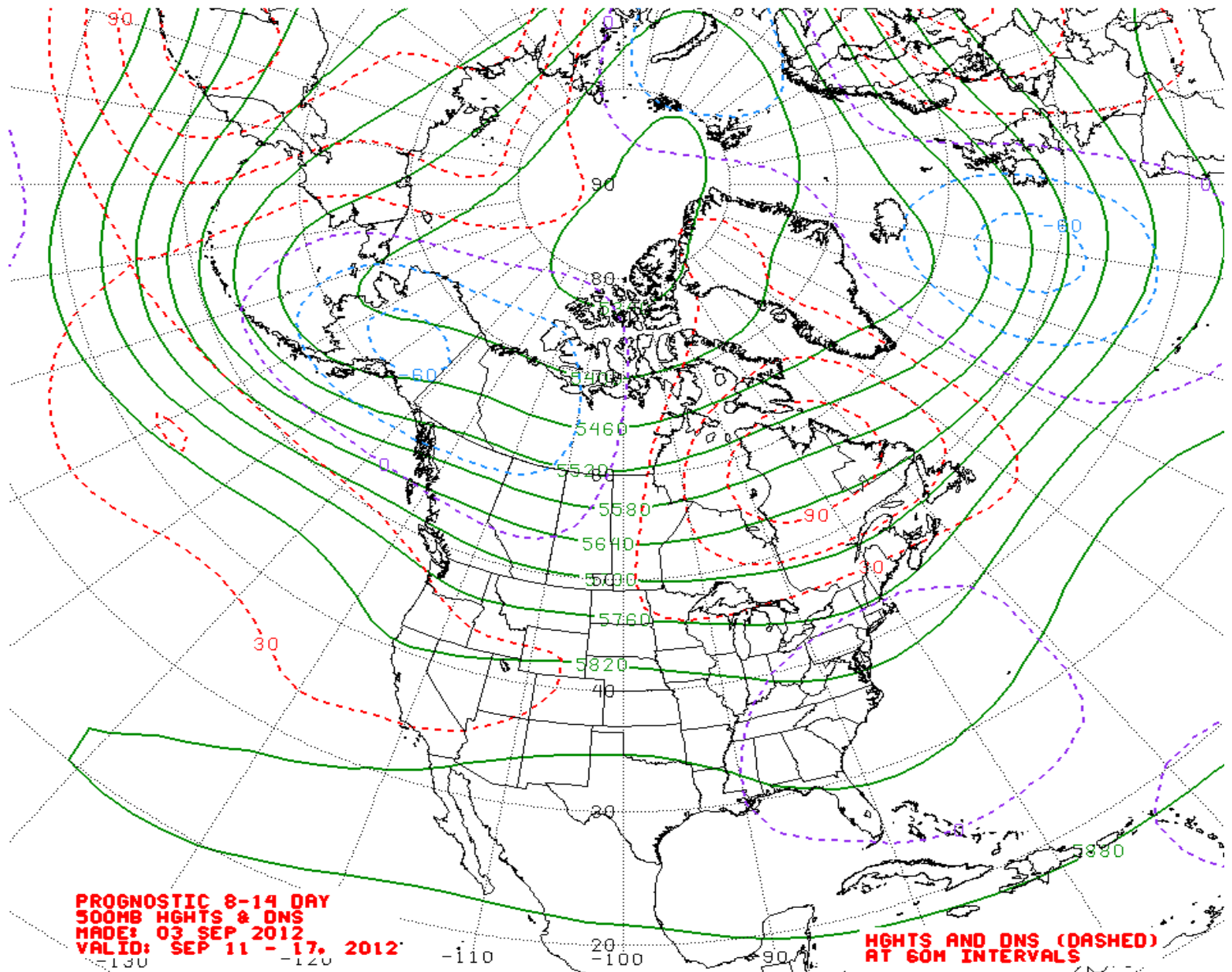


Tropical Cyclone Guidance

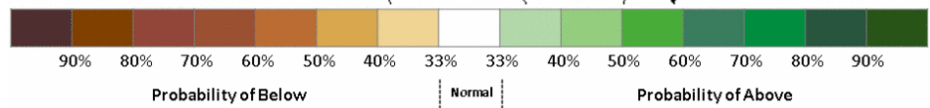
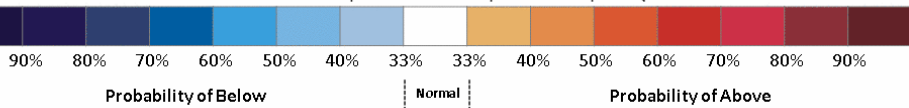
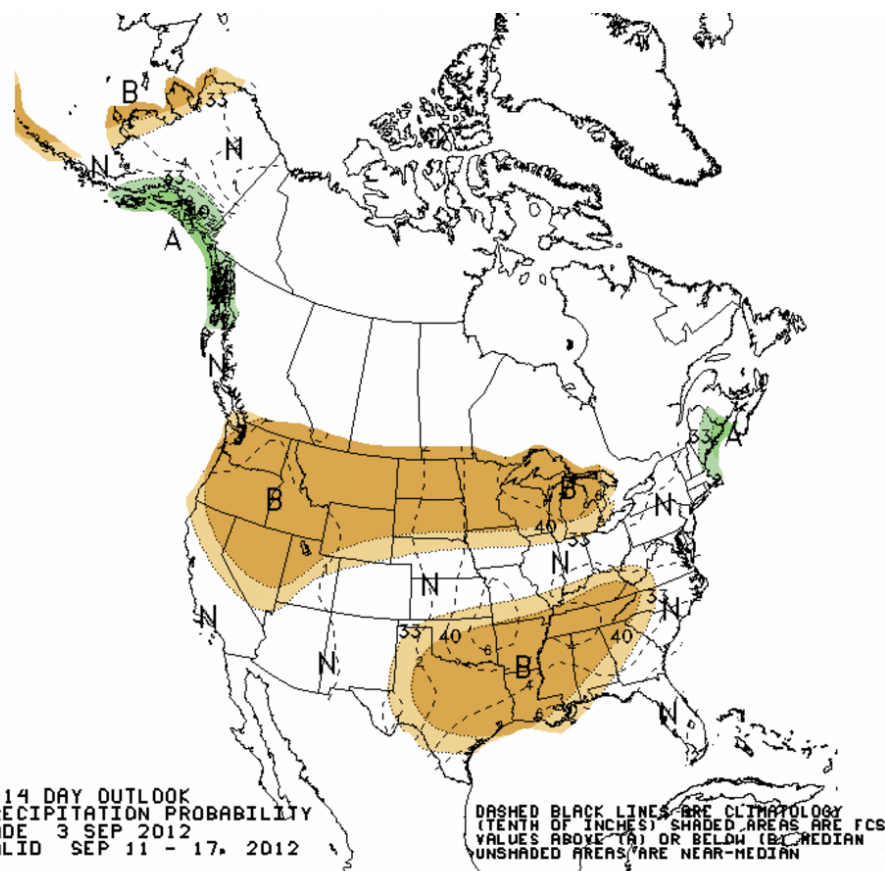
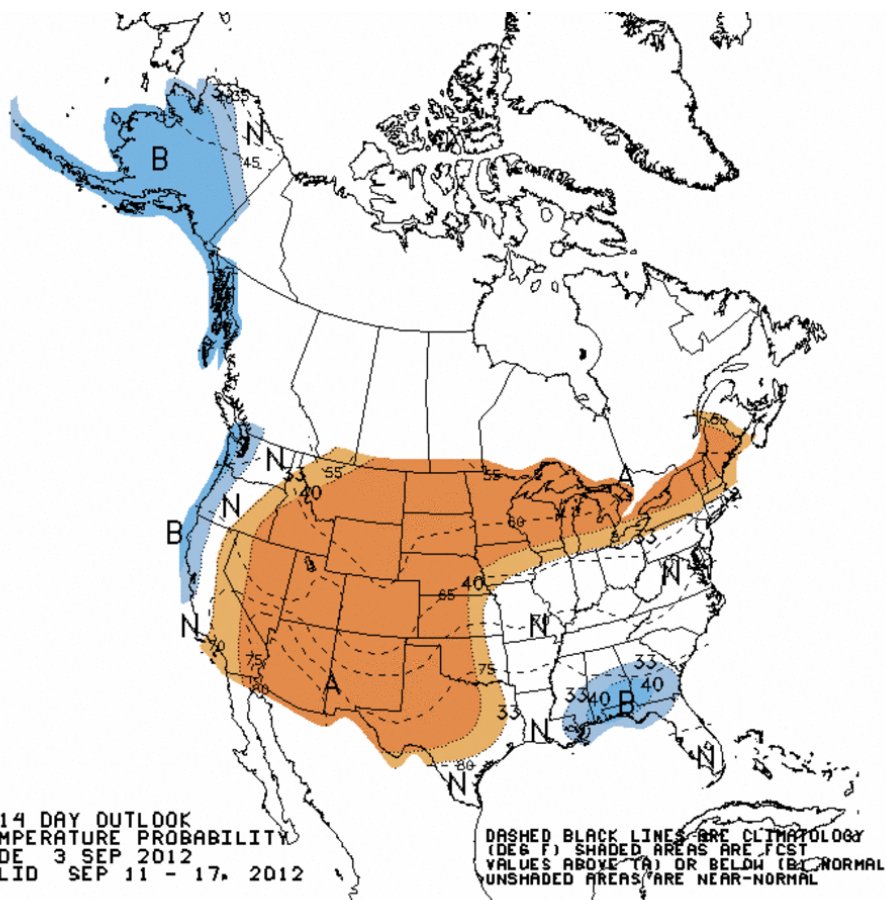
CWB TC Fuzzy Likelihood Map (2012090400)



Week 2 500-hPa Manual Chart



Week 2

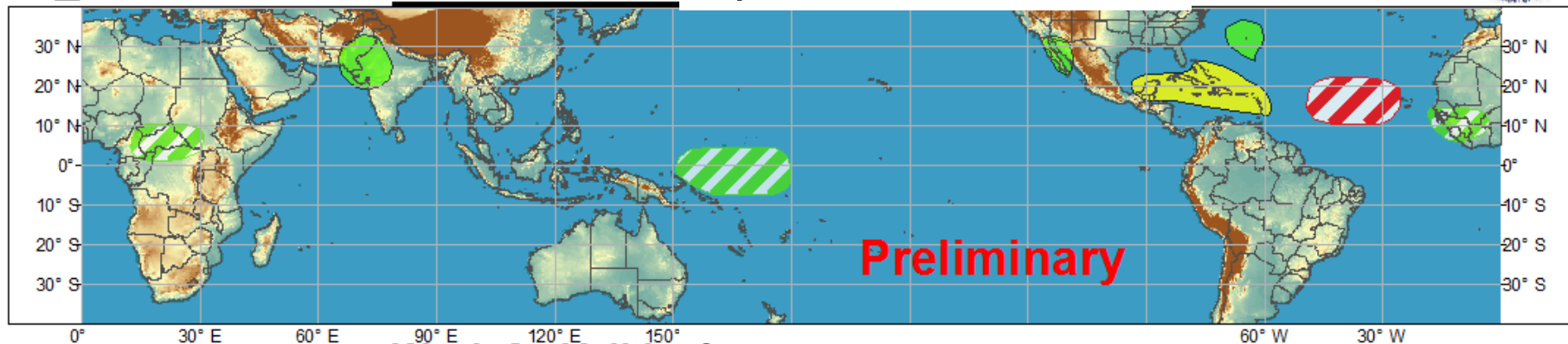




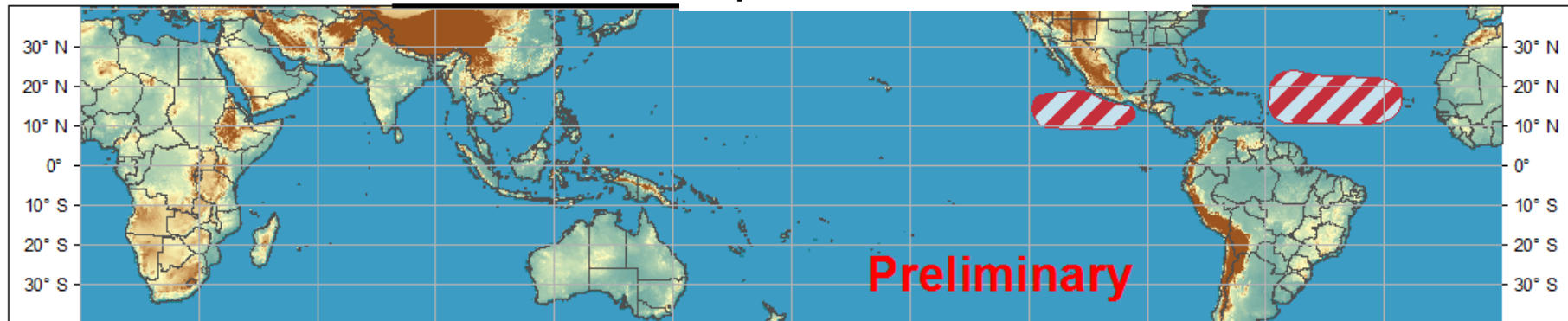
Global Tropical Hazards/Benefits Outlook - Climate Prediction Center



Week 1 - Valid: Sep 5-11



Week 2 - Valid: Sep 12-18



Confidence
High Moderate

Tropical Cyclone Formation



Development of a tropical cyclone that eventually reaches tropical storm/cyclone strength.

Above-average rainfall



Weekly total rainfall in the upper third of the historical range.

Below-average rainfall



Weekly total rainfall in the lower third of the historical range.

Above-normal temperatures



7-day mean temperatures in the upper third of the historical range.

Below-normal temperatures



7-day mean temperatures in the lower third of the historical range.

Produced: 09/04/2012

Forecaster: Pugh

Product is updated once per week. The product targets broad scale conditions integrated over a 7-day period for US interests only. Consult your local responsible forecast agency.

