

Global Tropics Hazards And Benefits Outlook

May 15, 2012

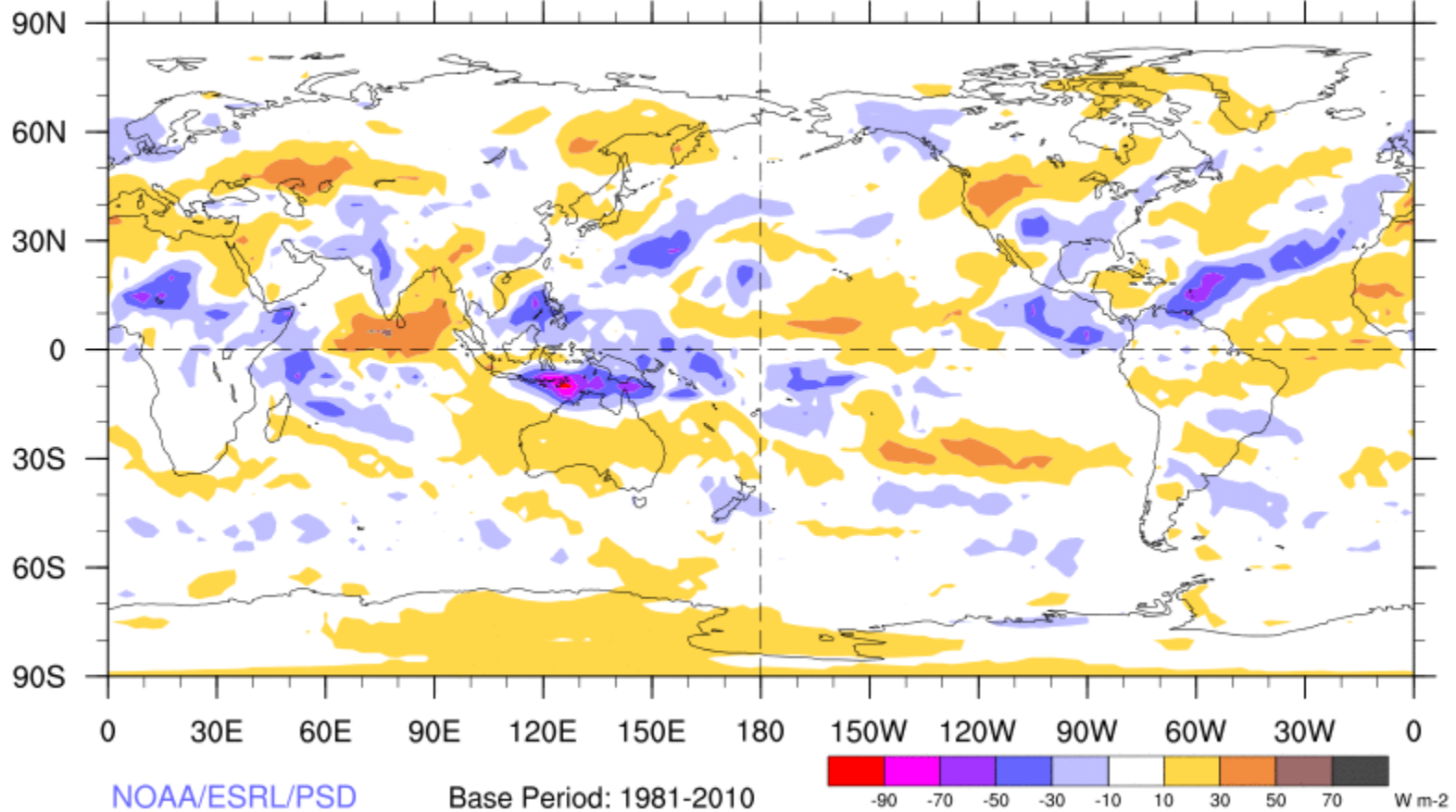
Sarah Marquardt

Outline

1. Review of Recent Conditions
2. Synopsis of Climate Modes
3. GTH Outlook and Forecast Discussion

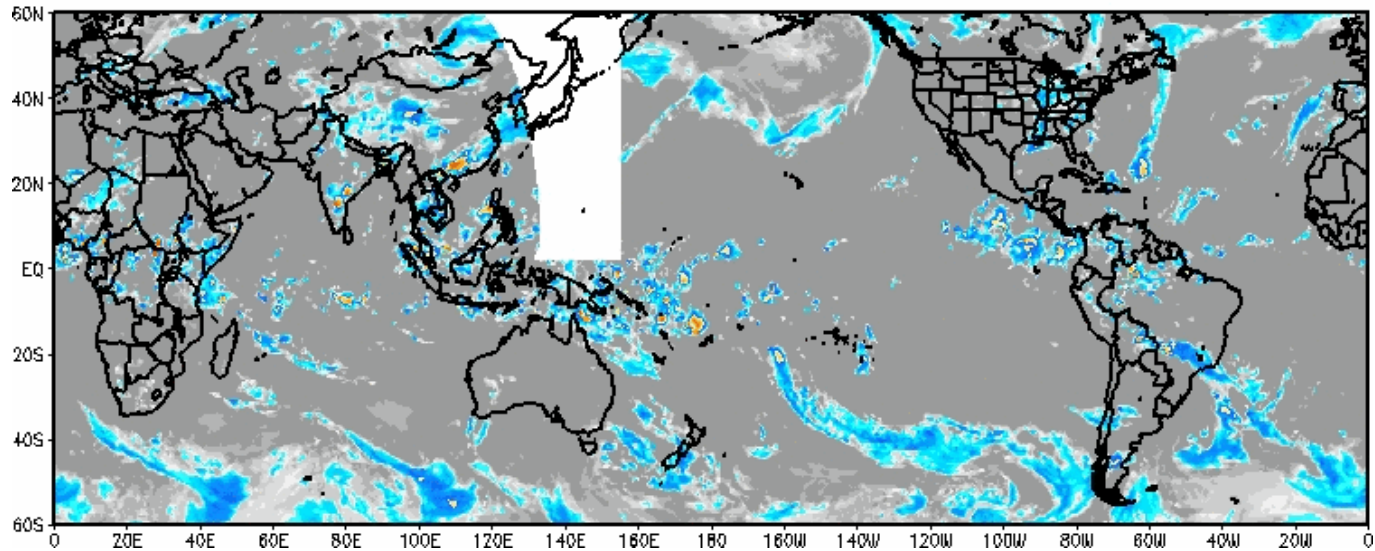
7-Day Average OLR Anomaly

2012/05/07 - 2012/05/13

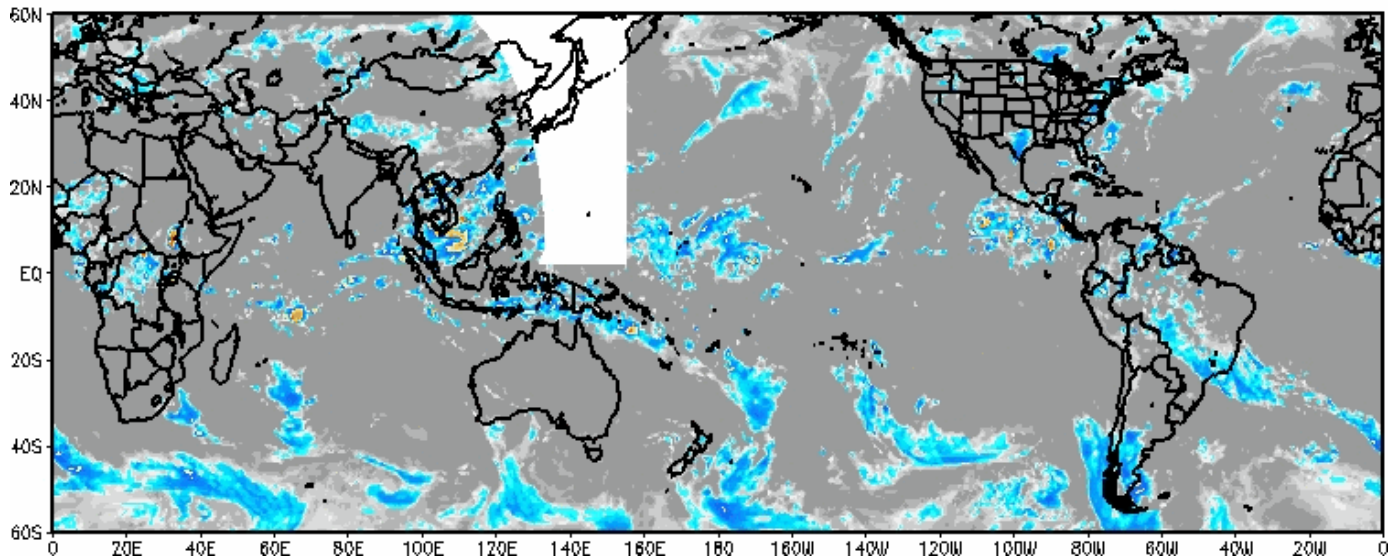


Weekly Satellite Review

IR Temperatures
1800 UTC 12 MAY 2012



IR Temperatures
0600 UTC 15 MAY 2012







Forecast Review

Week 1 - Valid: May 09, 2012 - May 15, 2012



Week 2 - Valid: May 09, 2012 - May 15, 2012



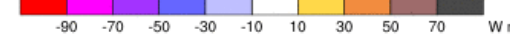
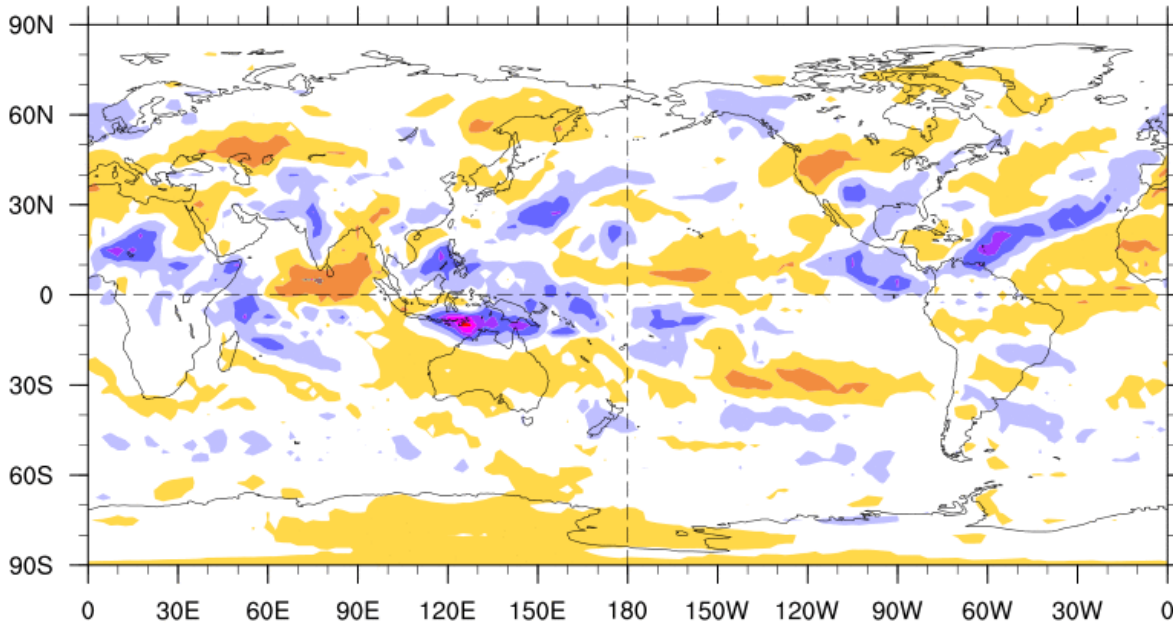
Confidence		
High	Moderate	
		Development of a tropical cyclone
		Weekly total rainfall in the above-normal range
		Weekly total rainfall in the below-normal range
		7-day mean temperatures in the above-normal range
		7-day mean temperatures in the below-normal range

Product is updated once per week. The product targets broad scale conditions. Consult your local responsible forecast agency.



7-Day Average OLR Anomaly

2012/05/07 - 2012/05/13



Synopsis of Climate Modes

ENSO:

--La Nina has transitioned to ENSO-neutral conditions and is expected to continue through northern summer.

MJO:

--The MJO remained incoherent during the past week

--Weak or incoherent MJO activity is expected during the next 1-2 weeks

Extratropics:

--Tropical moisture feeding into southeast coast along stationary front over Bahamas and Caribbean, week 1

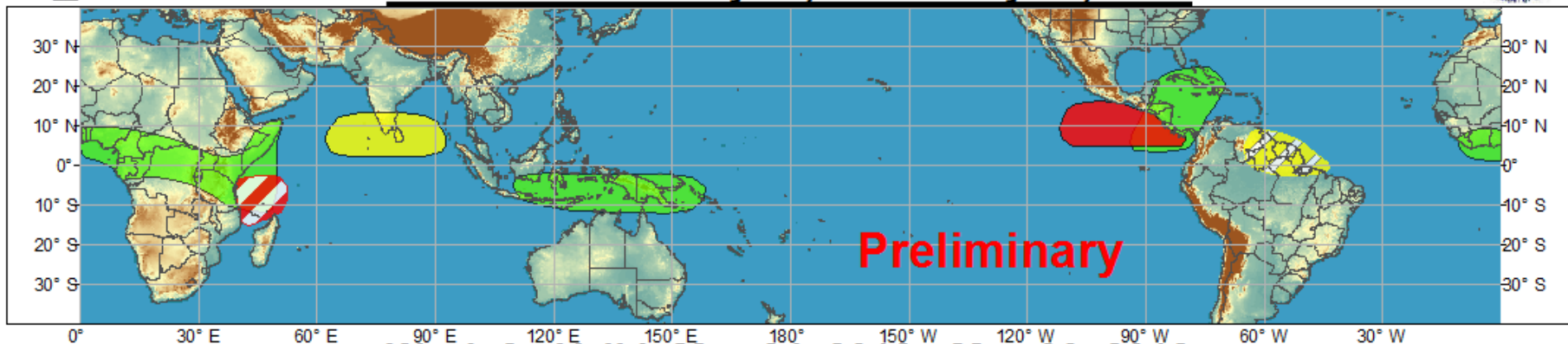
-- Possible tropical cyclone in western Caribbean, early week 2



Global Tropical Hazards/Benefits Outlook - Climate Prediction Center



Week 1 - Valid: May 17, 2012 - May 23, 2012













Week 2 - Valid: May 24, 2012 - May 30, 2012



Produced: 05/15/2012

Confidence
High Moderate

- | | | |
|-----------------------------------|---|--|
| Tropical Cyclone Formation |   | Development of a tropical cyclone that eventually reaches tropical storm/cyclone strength. |
| Above-average rainfall |   | Weekly total rainfall in the upper third of the historical range. |
| Below-average rainfall |   | Weekly total rainfall in the lower third of the historical range. |
| Above-normal temperatures |   | 7-day mean temperatures in the upper third of the historical range. |
| Below-normal temperatures |   | 7-day mean temperatures in the lower third of the historical range. |

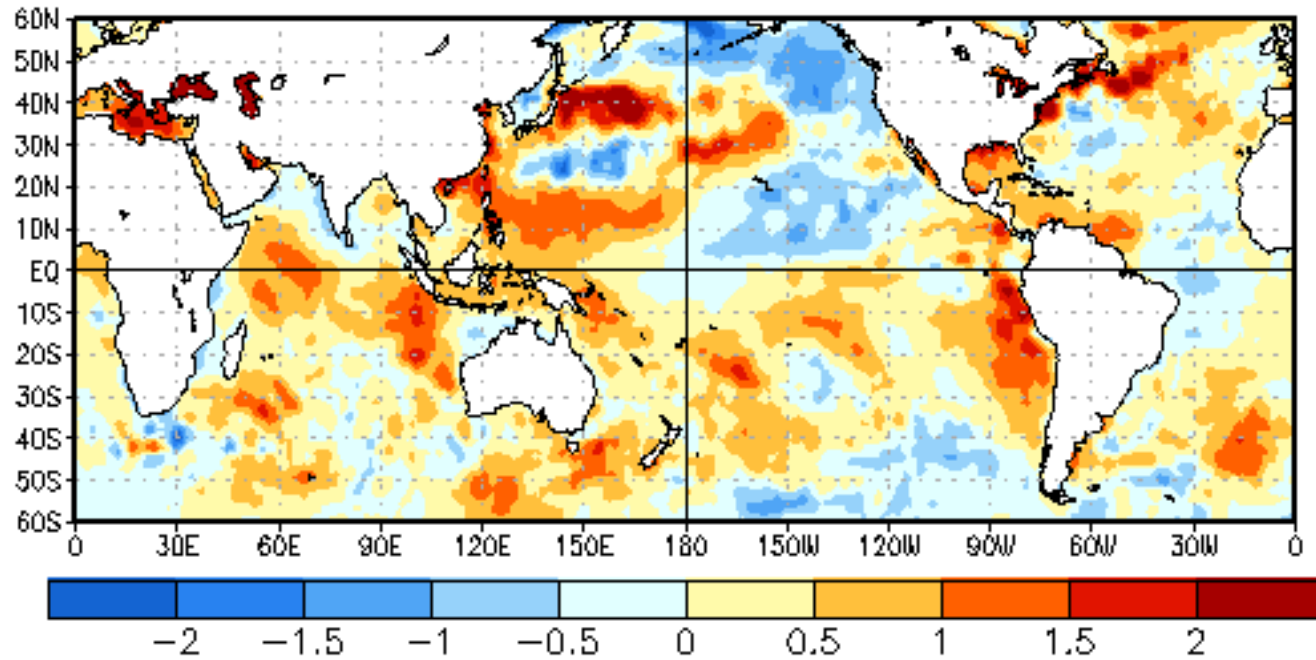
Product is updated once per week. The product targets broad scale conditions integrated over a 7-day period for US interests only. Consult your local responsible forecast agency.



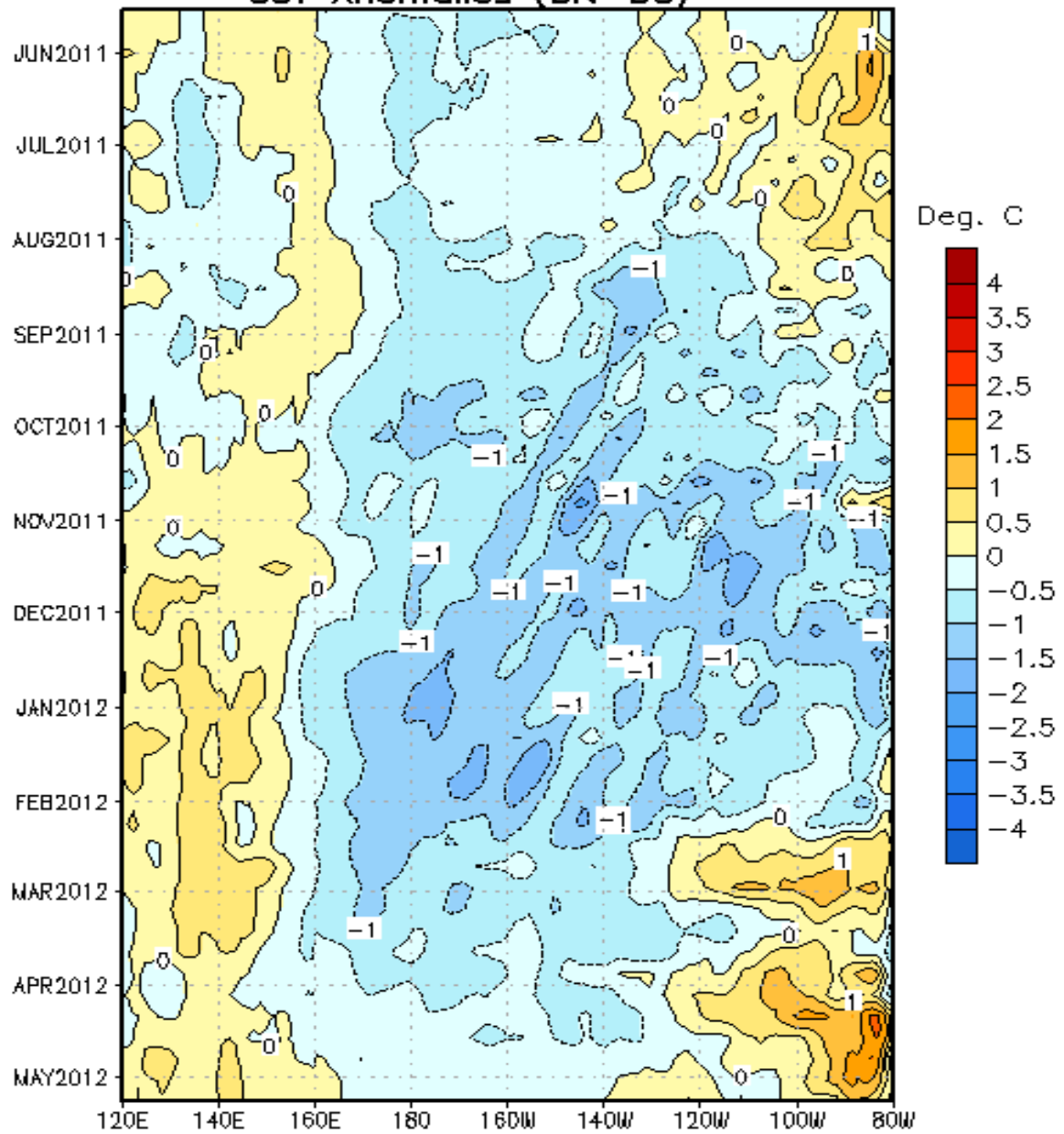
SST Observations

SST Anomalies (°C)

09 MAY 2012

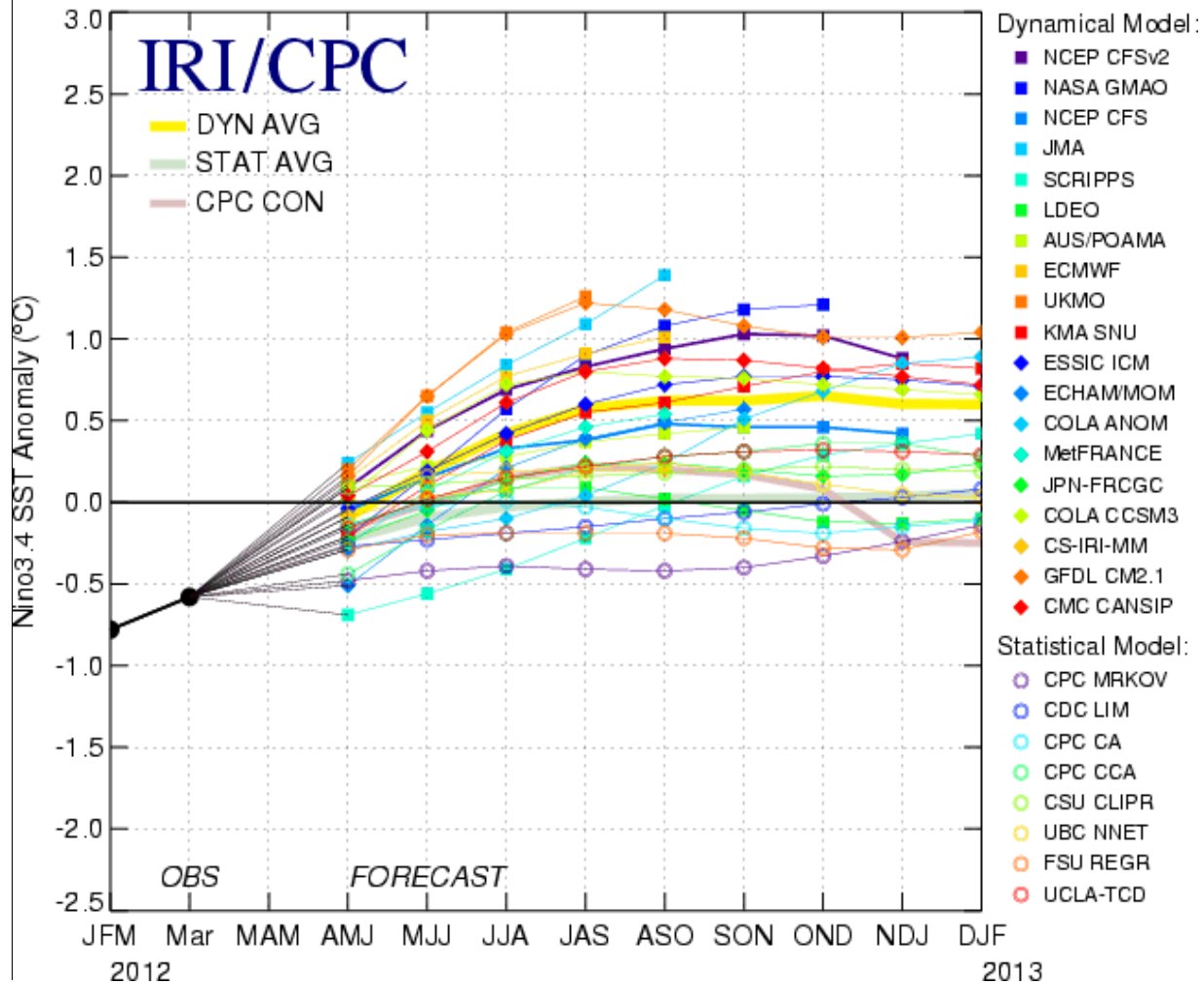


SST Anomalies (5N-5S)

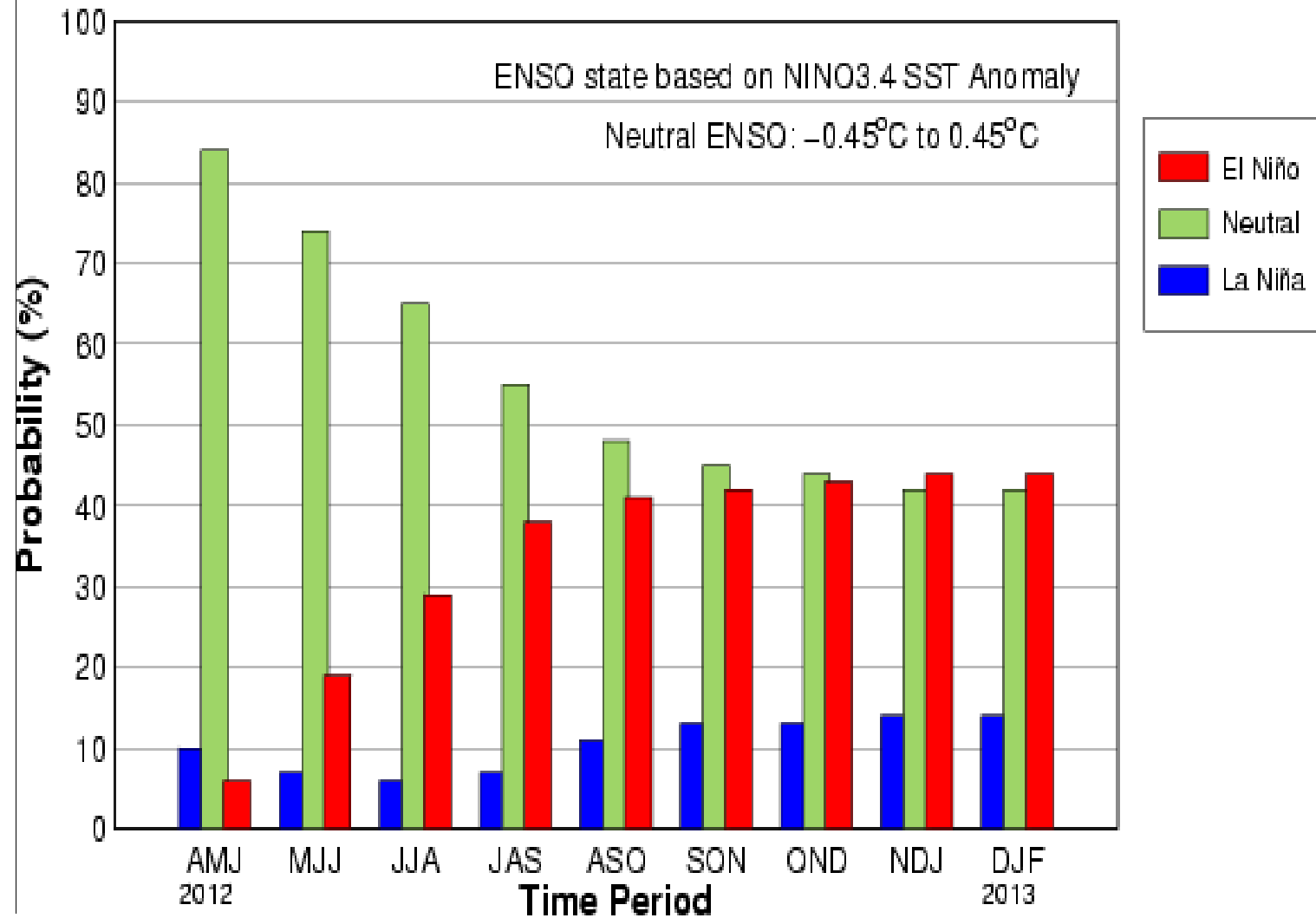


Nino3.4 SST Anomaly Forecasts

Mid-Apr 2012 Plume of Model ENSO Predictions

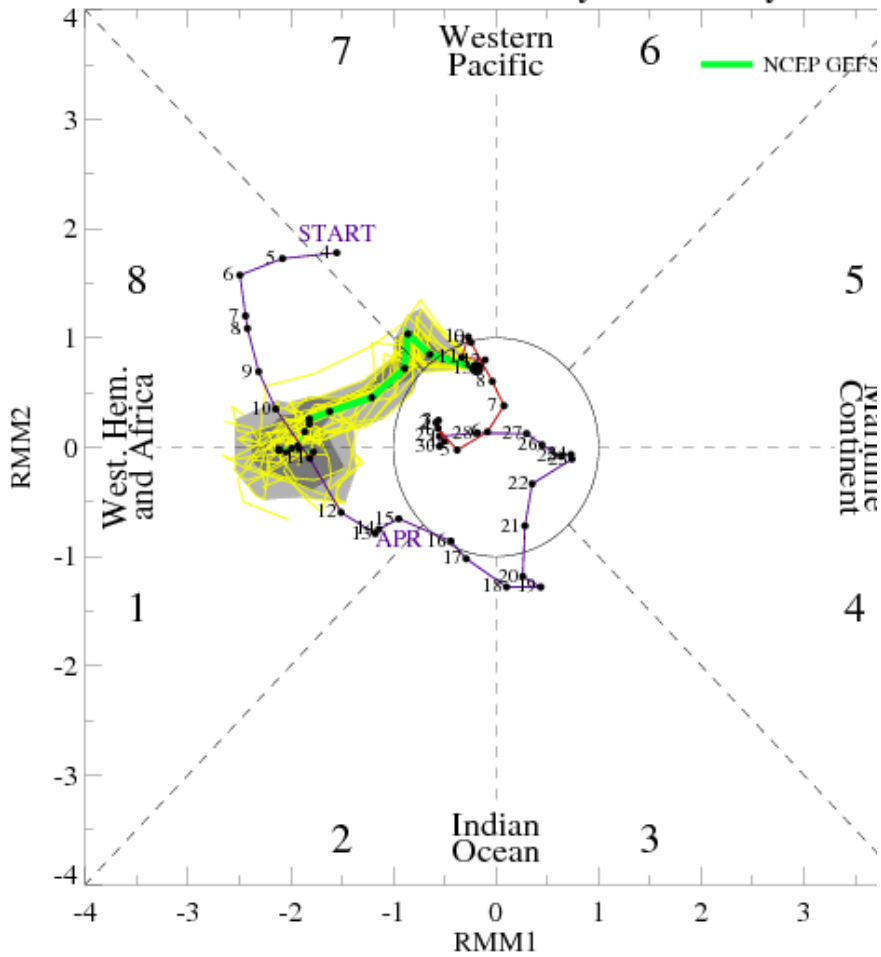


Official Early-May CPC/IRI Consensus Probabilistic ENSO Forecast

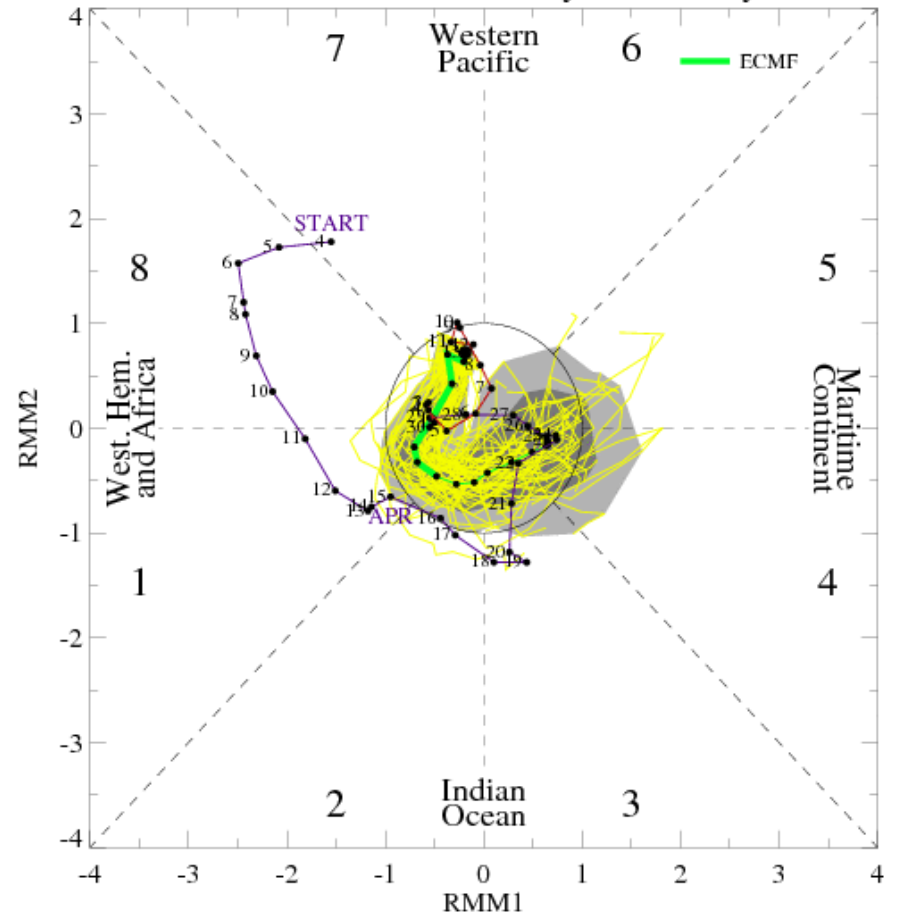


MJO Observation/Forecast

MJO Index Forecast for 14May2012-28May2012



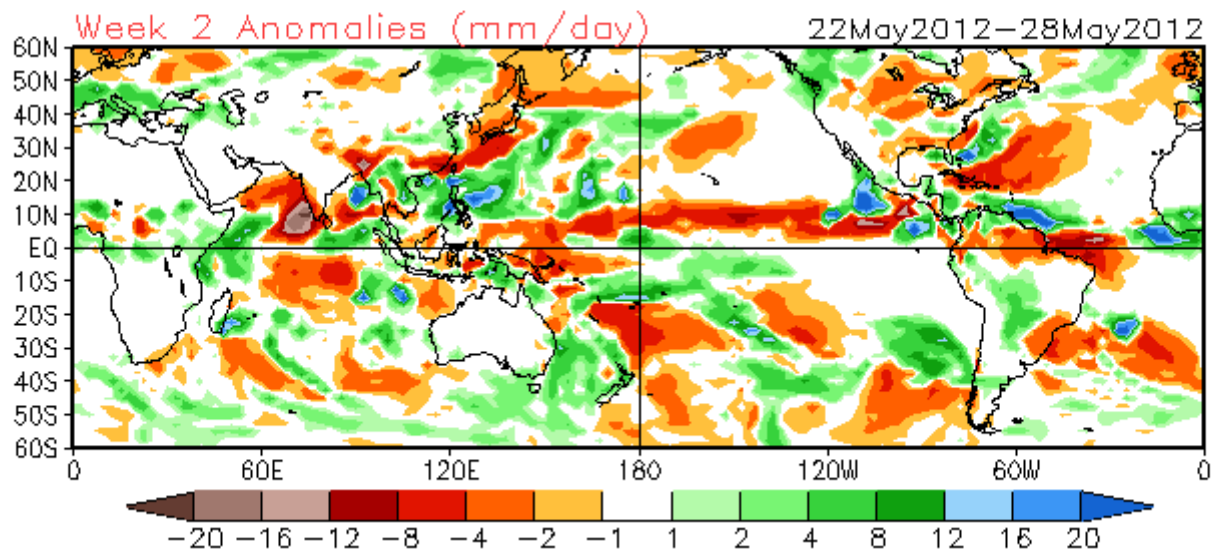
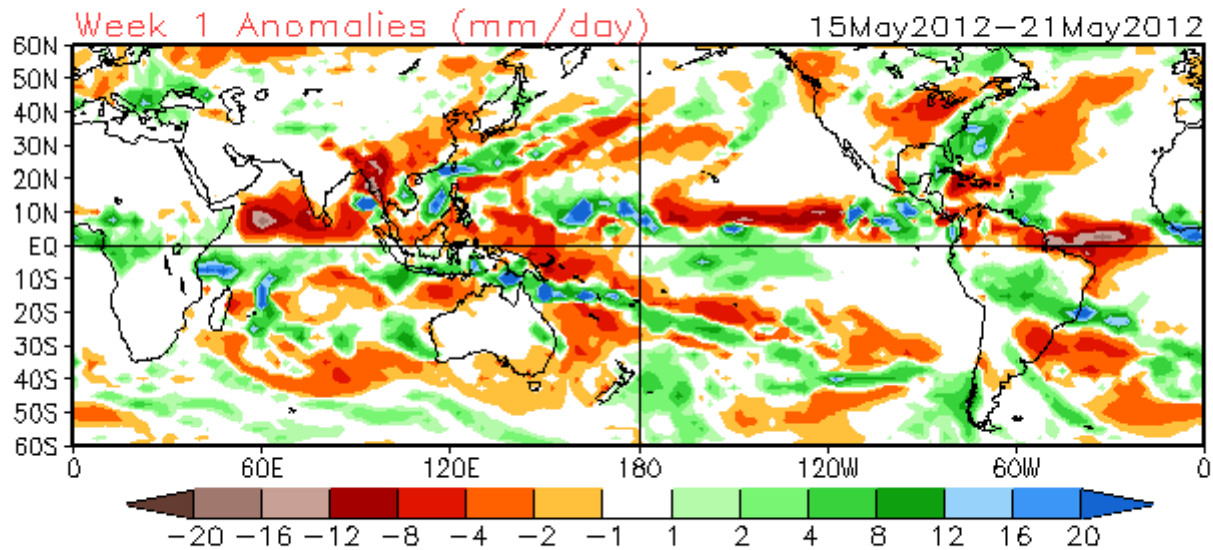
MJO Index Forecast for 14May2012-28May2012

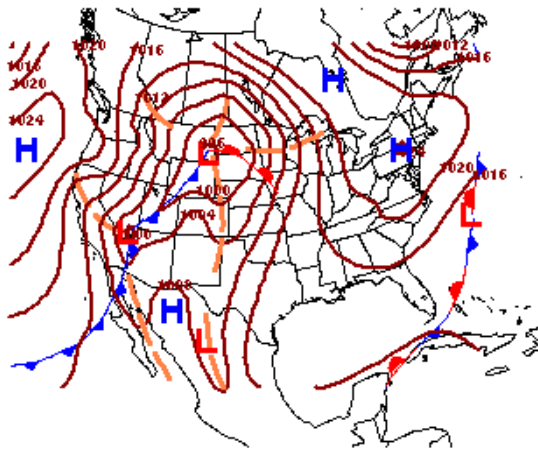


CFS Precipitation Weeks 1-2

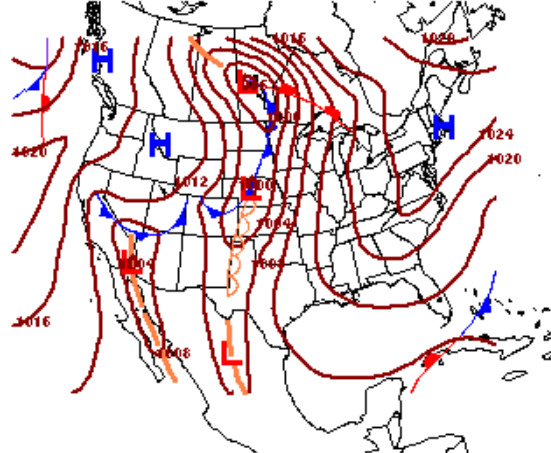
CFSv2 Weeks 1 & 2 Precipitation

16 Member Ensemble Mean Forecast from 14May2012

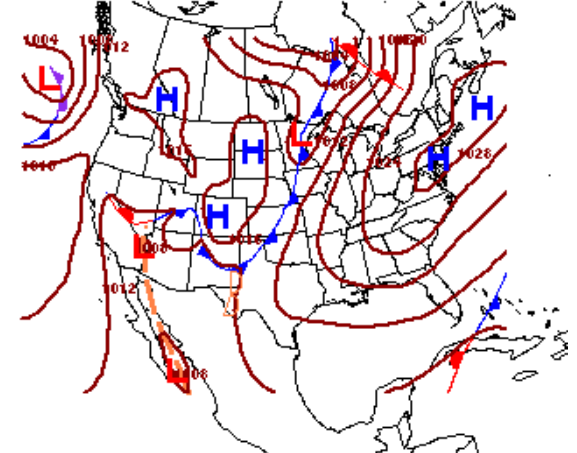




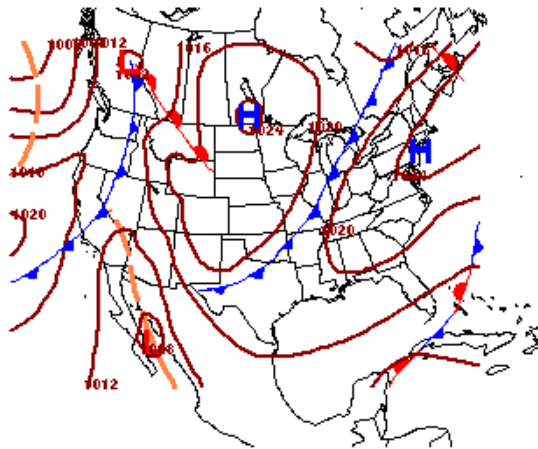
HPC DAY 3 SFC PROG
 ISSUED: 1313Z TUE MAY 15 2012
 VALID: 12Z FRI MAY 18 2012
 FCSTR: JAMES
 DOC/NOAA/NWS/NCEP/HPC



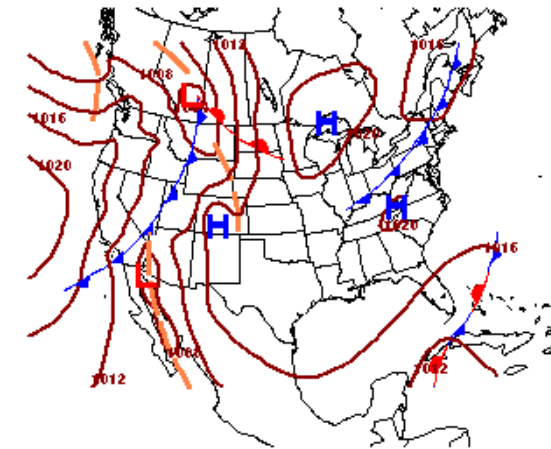
HPC DAY 4 SFC PROG
 ISSUED: 1313Z TUE MAY 15 2012
 VALID: 12Z SAT MAY 19 2012
 FCSTR: JAMES
 DOC/NOAA/NWS/NCEP/HPC



HPC DAY 5 SFC PROG
 ISSUED: 1313Z TUE MAY 15 2012
 VALID: 12Z SUN MAY 20 2012
 FCSTR: JAMES
 DOC/NOAA/NWS/NCEP/HPC

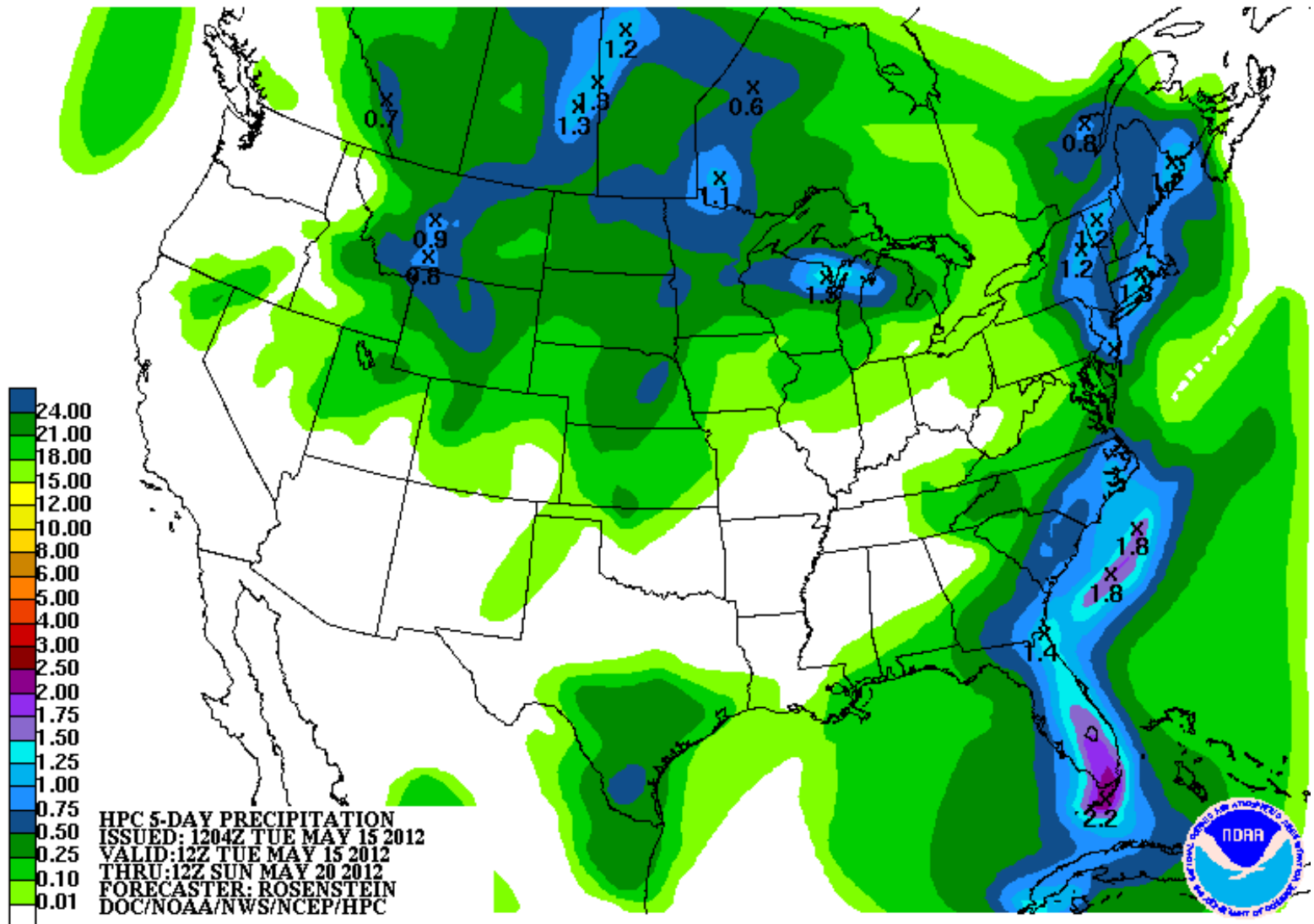


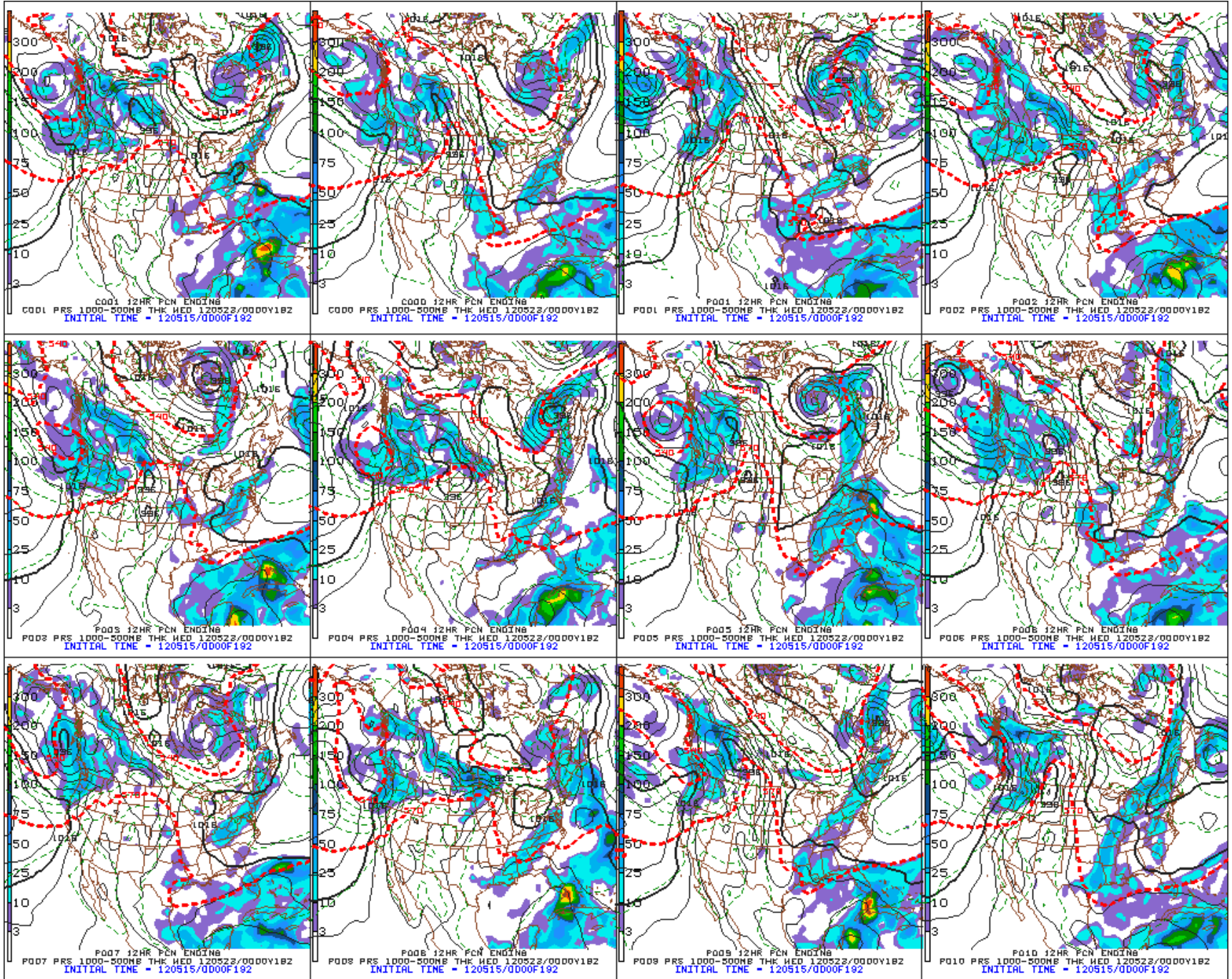
HPC DAY 6 SFC PROG
 ISSUED: 1313Z TUE MAY 15 2012
 VALID: 12Z MON MAY 21 2012
 FCSTR: JAMES
 DOC/NOAA/NWS/NCEP/HPC



HPC DAY 7 SFC PROG
 ISSUED: 1313Z TUE MAY 15 2012
 VALID: 12Z TUE MAY 22 2012
 FCSTR: JAMES
 DOC/NOAA/NWS/NCEP/HPC

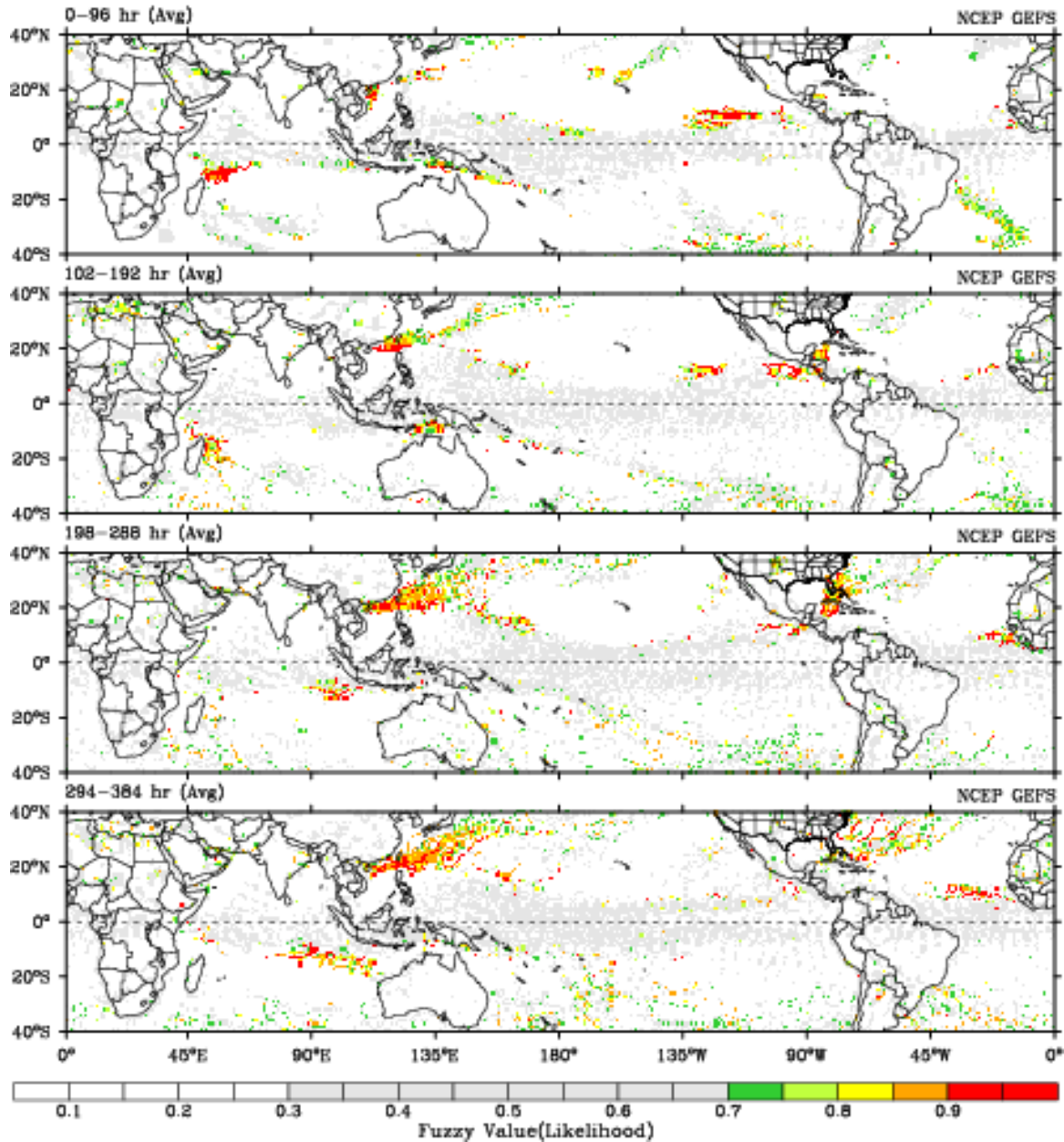




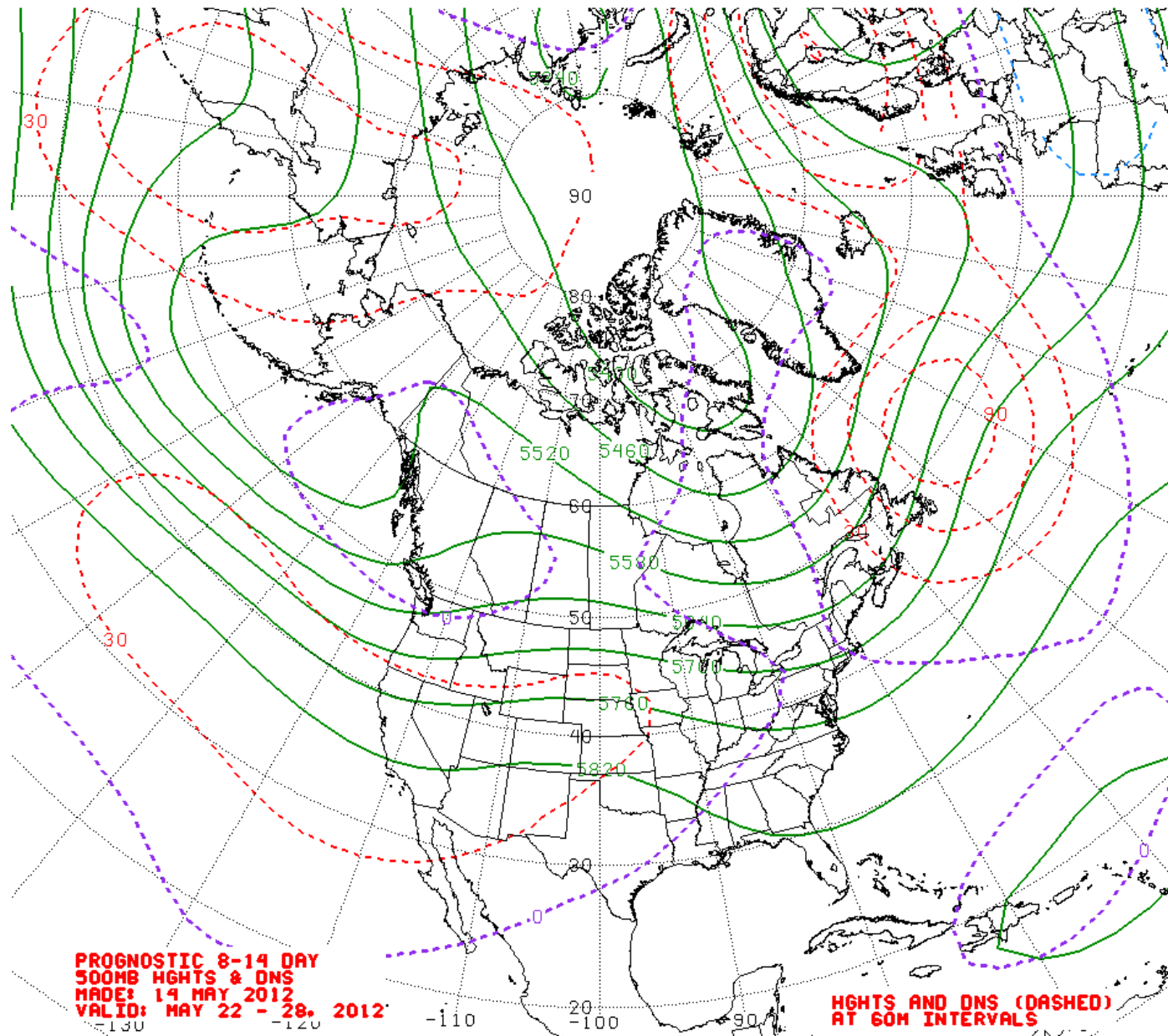


Tropical Cyclone Guidance

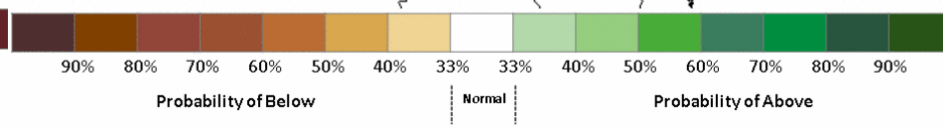
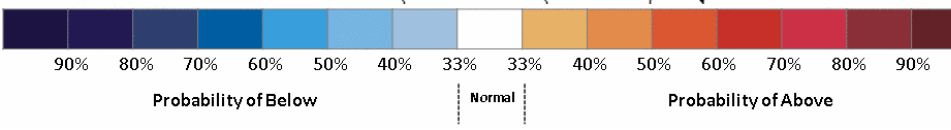
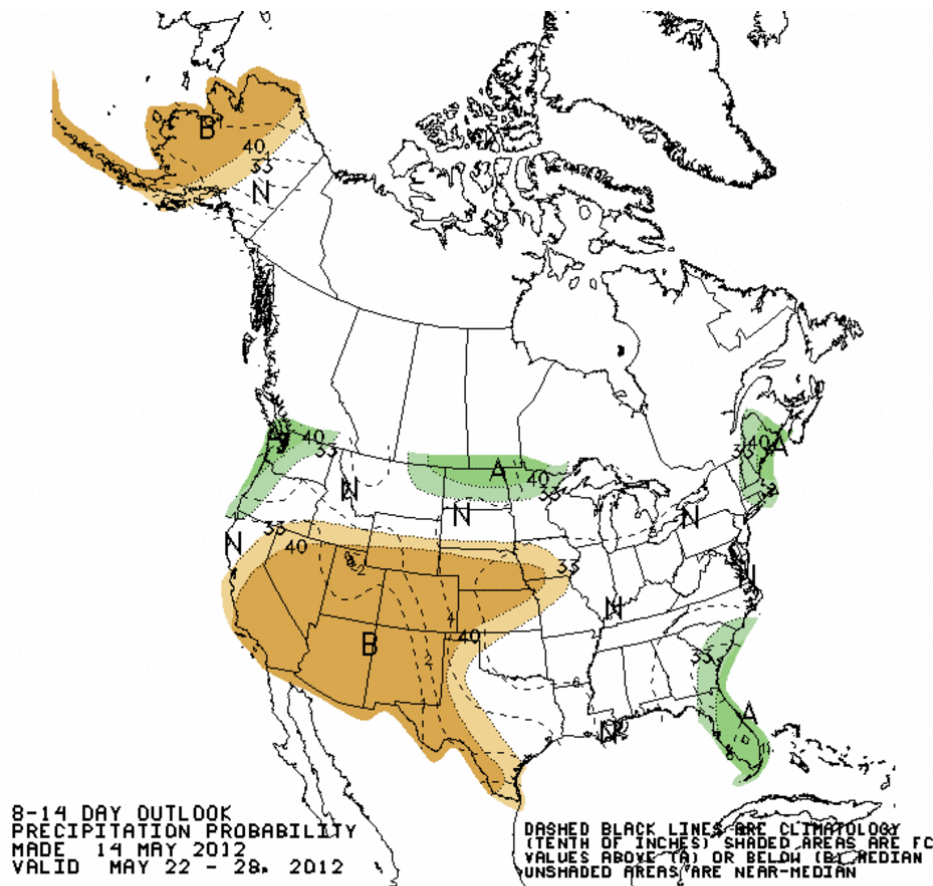
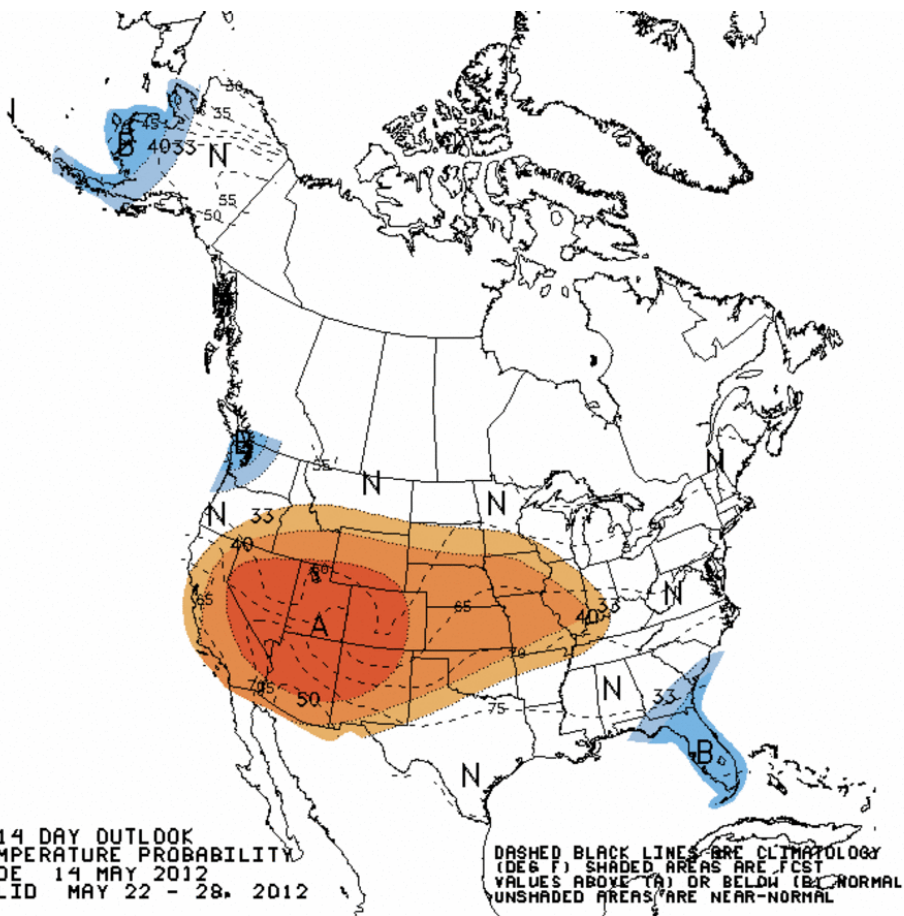
CWB TC Fuzzy Likelihood Map (2012051500)



Week 2 500-hPa Manual Chart



Week 2

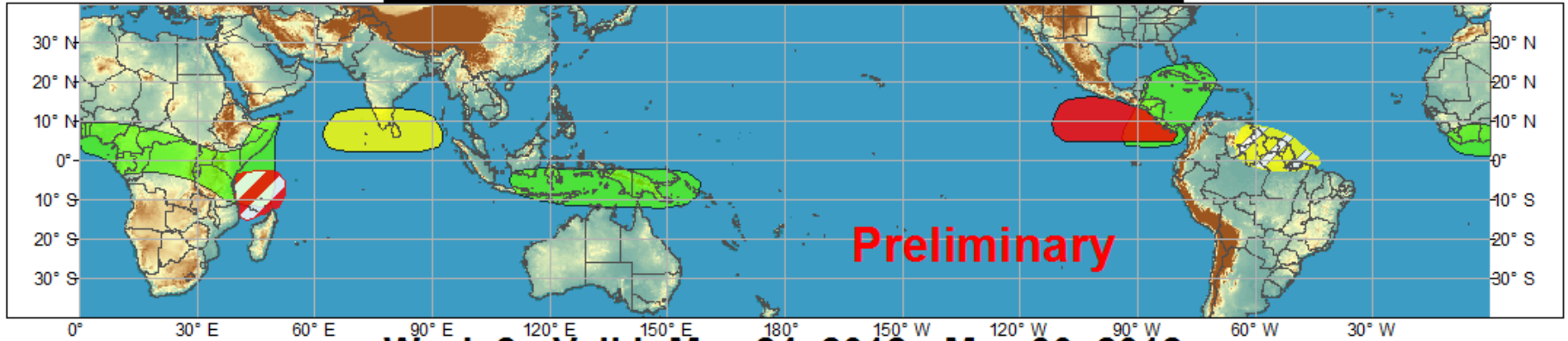




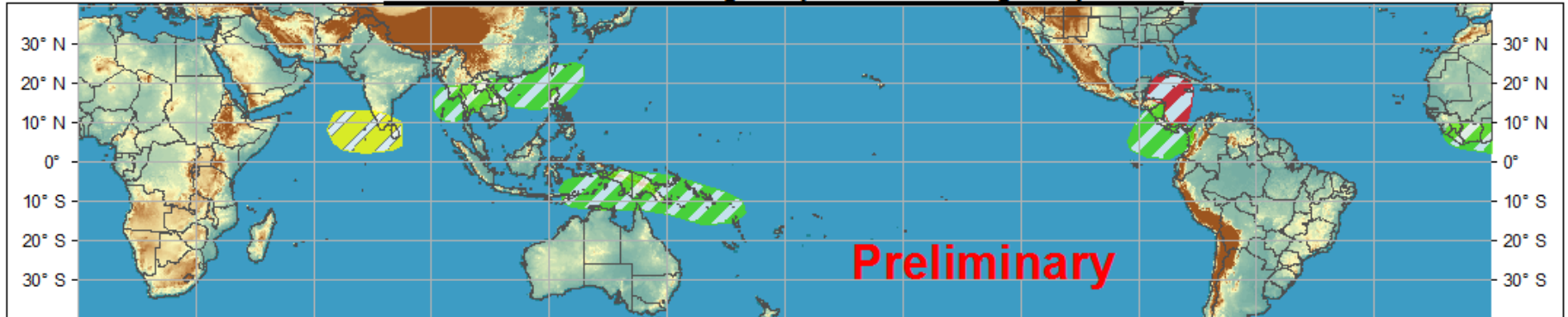
Global Tropical Hazards/Benefits Outlook - Climate Prediction Center



Week 1 - Valid: May 17, 2012 - May 23, 2012











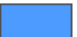

Week 2 - Valid: May 24, 2012 - May 30, 2012



Produced: 05/15/2012

Confidence

High Moderate

- | | | |
|-----------------------------------|---|--|
| Tropical Cyclone Formation |   | Development of a tropical cyclone that eventually reaches tropical storm/cyclone strength. |
| Above-average rainfall |   | Weekly total rainfall in the upper third of the historical range. |
| Below-average rainfall |   | Weekly total rainfall in the lower third of the historical range. |
| Above-normal temperatures |   | 7-day mean temperatures in the upper third of the historical range. |
| Below-normal temperatures |   | 7-day mean temperatures in the lower third of the historical range. |

Product is updated once per week. The product targets broad scale conditions integrated over a 7-day period for US interests only. Consult your local responsible forecast agency.

