

Madden-Julian Oscillation: Recent Evolution, Current Status and Predictions



Update prepared by:
Climate Prediction Center / NCEP
9 January 2017

Outline

Overview

Recent Evolution and Current Conditions

MJO Index Information

MJO Index Forecasts

MJO Composites

Overview

- Both the CPC and RMM MJO indices indicate weak MJO activity at this time.
- Background La Niña transitioning to a ENSO neutral, and a negatively phased Indian Ocean Dipole (IOD), continue to influence the pattern of anomalous tropical convection.
- Dynamical model forecasts of the RMM index generally maintain a weak MJO signal during week-1. Dynamical model guidance indicates a strengthening MJO signal during week-2 (e.g. JMAN in phase 8, GEFS in phase 1).

Additional potential impacts across the global tropics and a discussion for the U.S. are available at:
<http://www.cpc.ncep.noaa.gov/products/precip/CWlink/ghazards/index.php>

850-hPa Vector Wind Anomalies (m s^{-1})

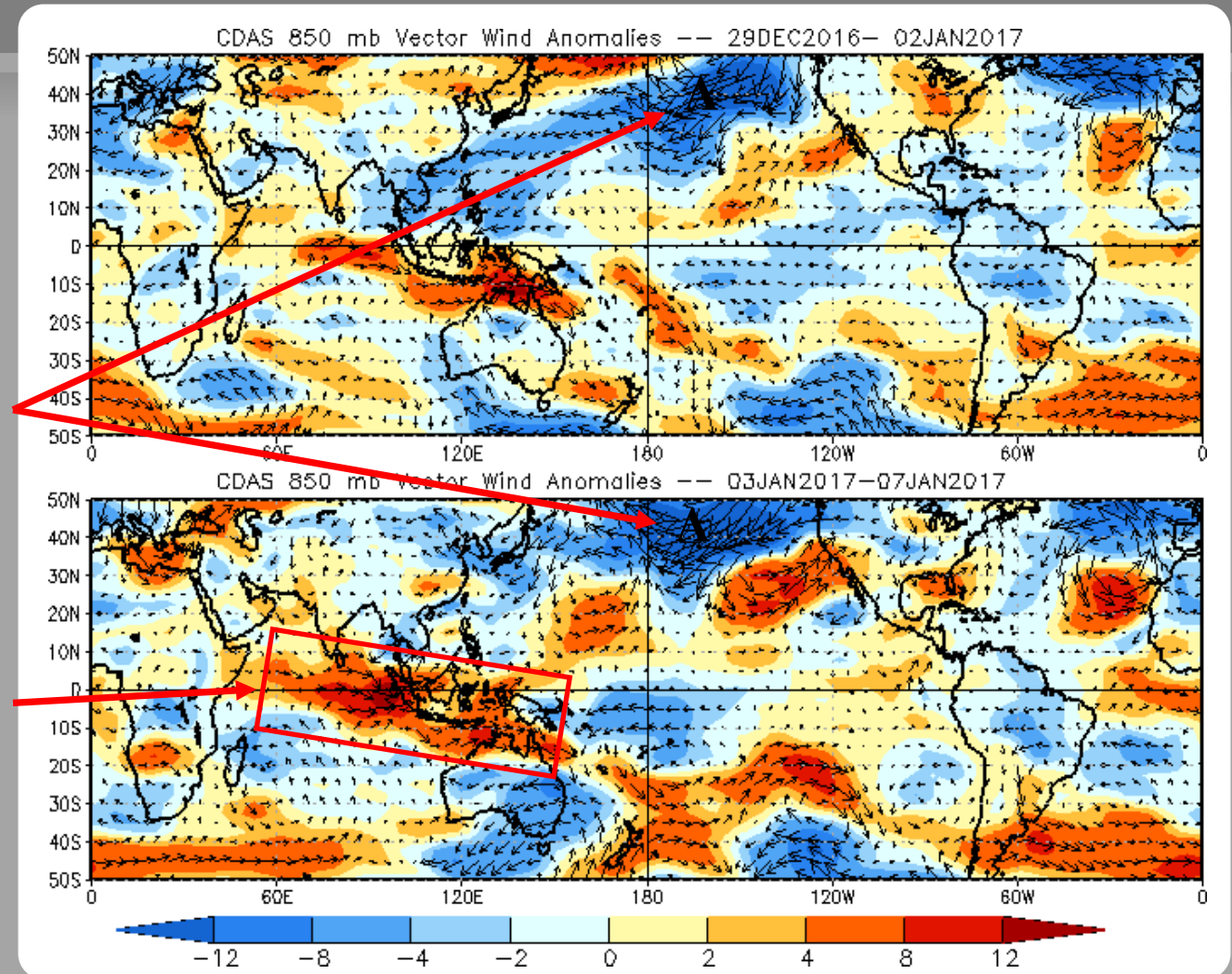
Note that shading denotes the zonal wind anomaly

Blue shades: Easterly anomalies

Red shades: Westerly anomalies

An anomalous anticyclone has persisted over the North Pacific.

Anomalous westerlies strengthened over the Indian Ocean and Maritime Continent.



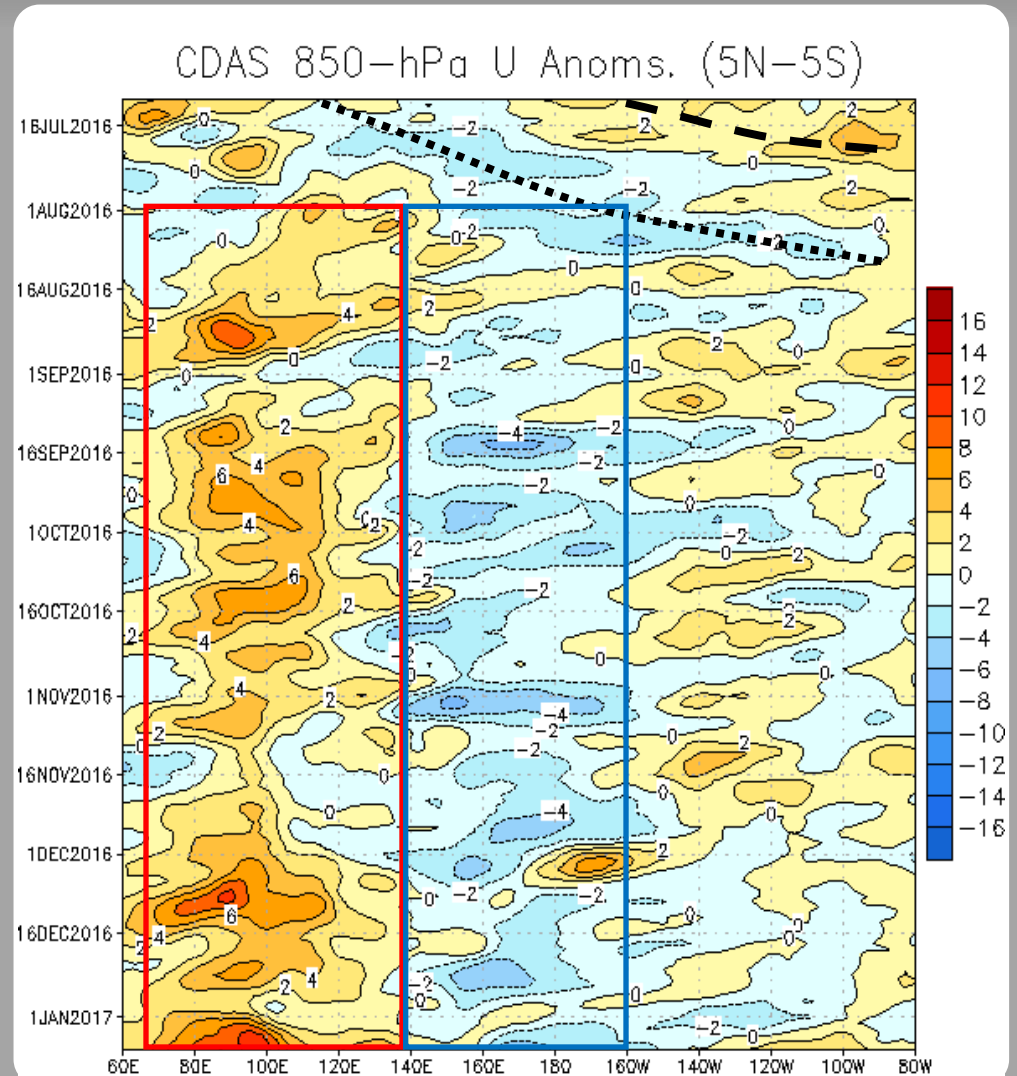
850-hPa Zonal Wind Anomalies (m s⁻¹)

Westerly anomalies (orange/red shading) represent anomalous west-to-east flow

Easterly anomalies (blue shading) represent anomalous east-to-west flow

In July and early August, high frequency, eastward-propagating modes were observed crossing the Pacific.

Since late July, persistent westerly (easterly) anomalies were evident over the eastern Indian Ocean and western Maritime Continent (central and western Pacific) as shown by the red (blue) box at right. These anomalies are low frequency in nature, and reflect the La Niña base state as well as a negative phase of the Indian Ocean Dipole.



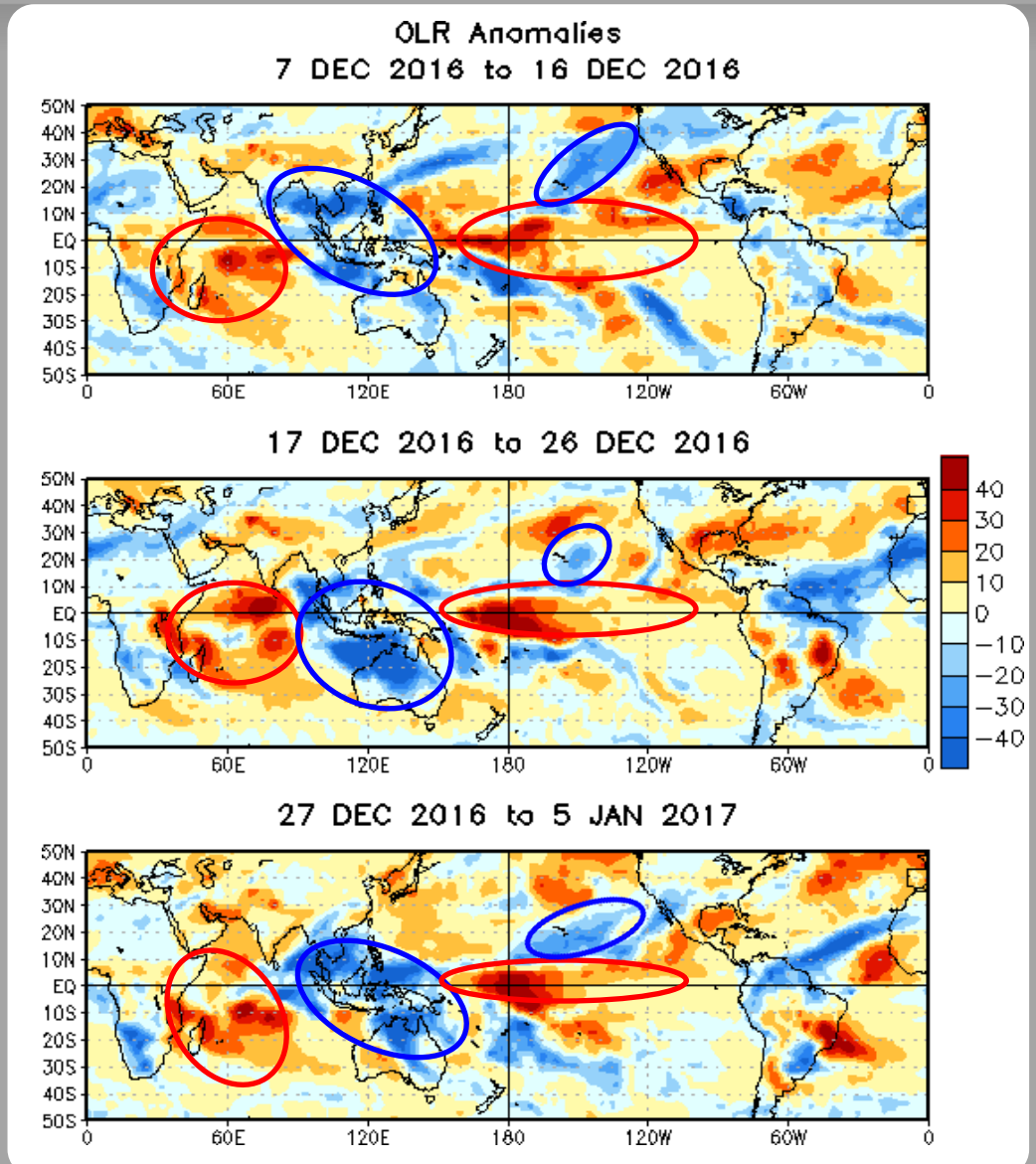
OLR Anomalies - Past 30 days

Drier-than-normal conditions, positive OLR anomalies (yellow/red shading)

Wetter-than-normal conditions, negative OLR anomalies (blue shading)

During early December, the low-frequency signal dominated the pattern of anomalous tropical convection, with suppressed (enhanced) convection over the central and western Indian Ocean and much of the equatorial Pacific (Maritime Continent).

This low-frequency pattern continued into late December and early January, with enhanced rainfall continuing near and northeast of Hawaii. The low-frequency state remained intact, with little evidence of coherent sub-seasonal variability. The negative phase of the Indian Ocean Dipole (IOD) is clearly evident.



Outgoing Longwave Radiation (OLR) Anomalies (2.5°S - 17.5° S)

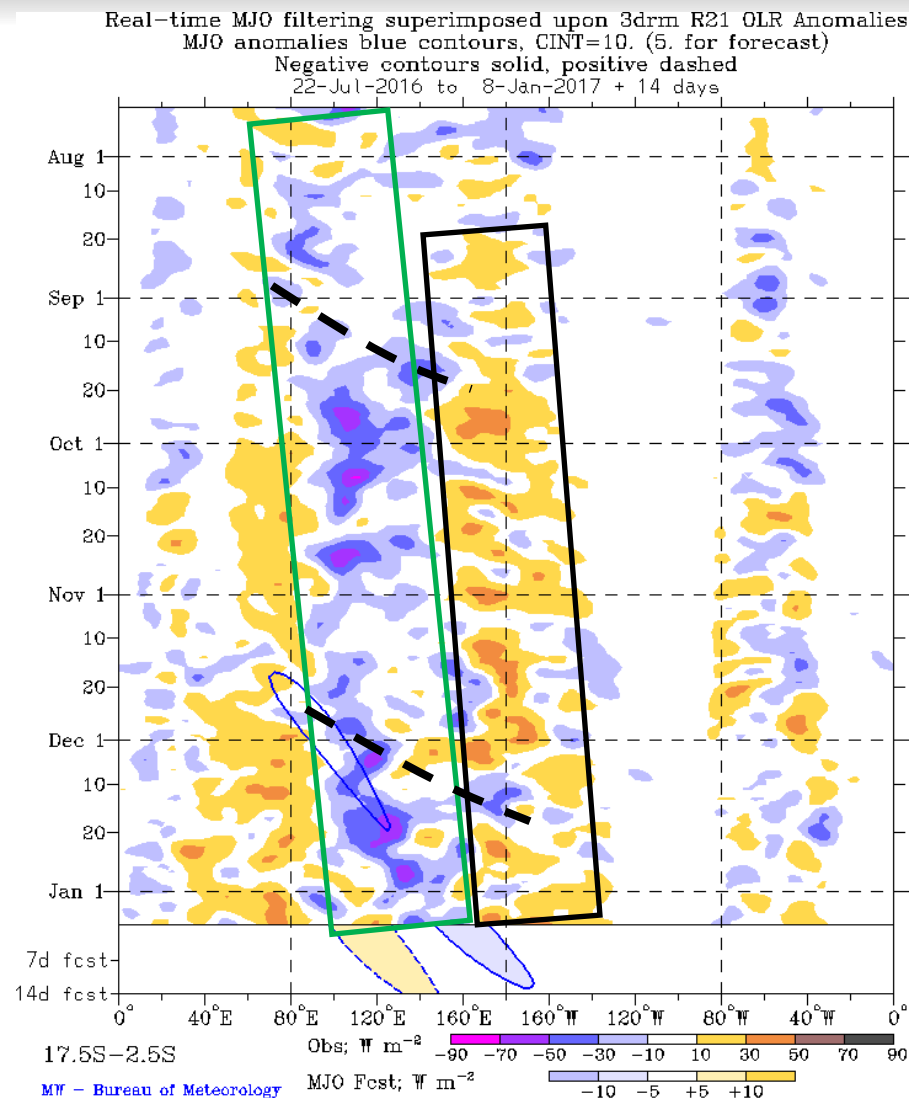
Drier-than-normal conditions, positive OLR anomalies (yellow/red shading)

Wetter-than-normal conditions, negative OLR anomalies (blue shading)

A low frequency state favoring enhanced convection shifted slowly east from the eastern Indian Ocean to the Maritime Continent has been evident since July (green box). Low-frequency suppressed convection, tied to building La Niña conditions, has been apparent near the Date Line since August (black box).

A fast eastward propagating convective envelope was evident during early September.

During most of December, an eastward propagating mode, on the fast end of the MJO phase speed envelope, was apparent across the Indian Ocean and West-Central Pacific.



200-hPa Velocity Potential Anomalies (5°S - 5°N)

Positive anomalies (brown shading) indicate unfavorable conditions for precipitation

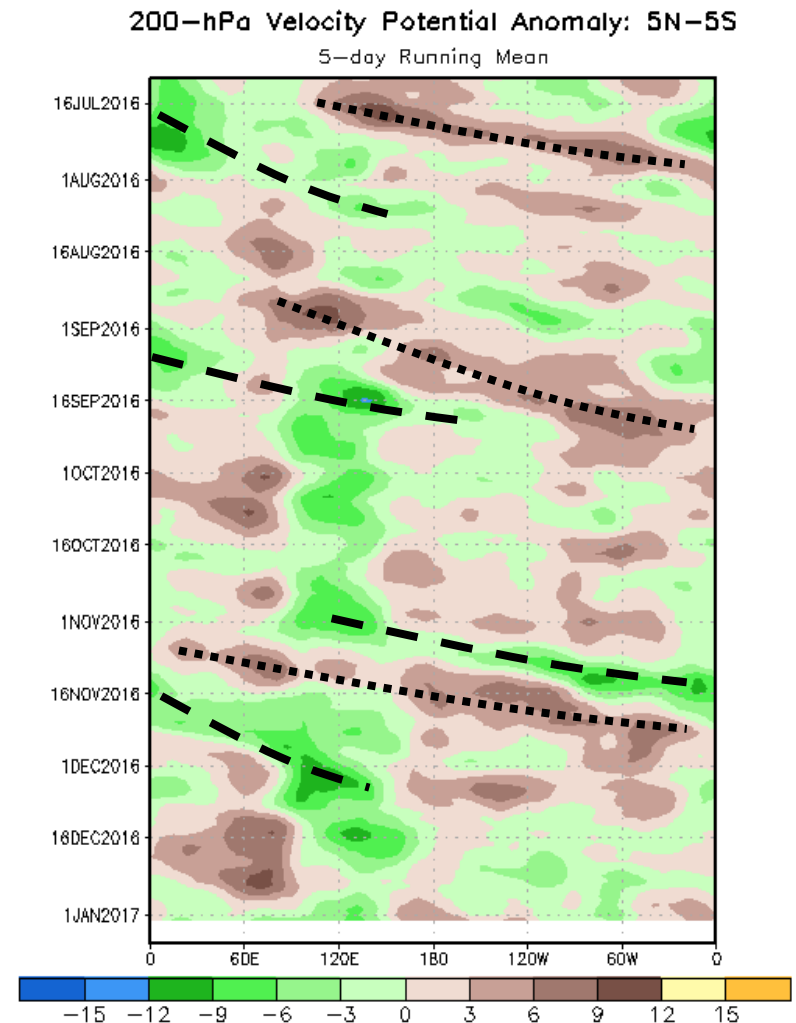
Negative anomalies (green shading) indicate favorable conditions for precipitation

Through early August, an eastward propagating signal was evident, with inactive and active periods of variability apparent.

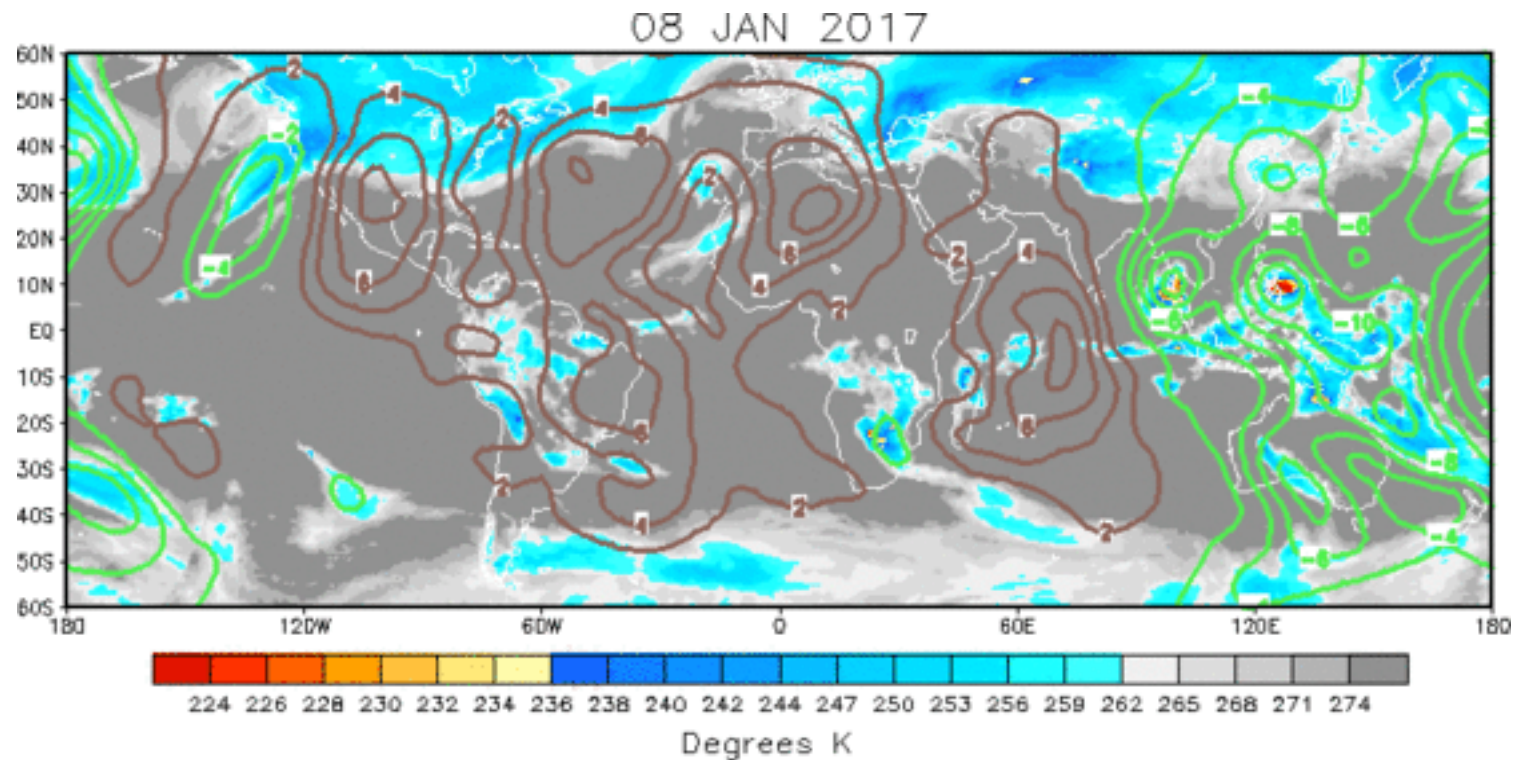
During August, the intraseasonal signal became less coherent, with a weaker and somewhat more stationary anomaly field in place. By late August and early September, there was renewed propagation of the intraseasonal signal.

From mid-September to late October, the low frequency signal dominated the pattern. During November, eastward propagation was observed consistent with MJO activity on the fast end of the intraseasonal spectrum.

During December, a more stationary pattern is evident with positive (negative) anomalies observed across the Indian Ocean (Maritime Continent and West Pacific). During the second half of the month, remnant weak MJO activity is inferred over the Western Hemisphere.



IR Temperatures (K) / 200-hPa Velocity Potential Anomalies



The pattern of upper-level velocity potential anomalies has become more coherent with a wave number 1 pattern, characterized by enhanced upper-level divergence from the eastern Indian Ocean and Maritime Continent to near 150W, and enhanced upper-level convergence over the remainder of the globe.

Positive anomalies (brown contours) indicate unfavorable conditions for precipitation

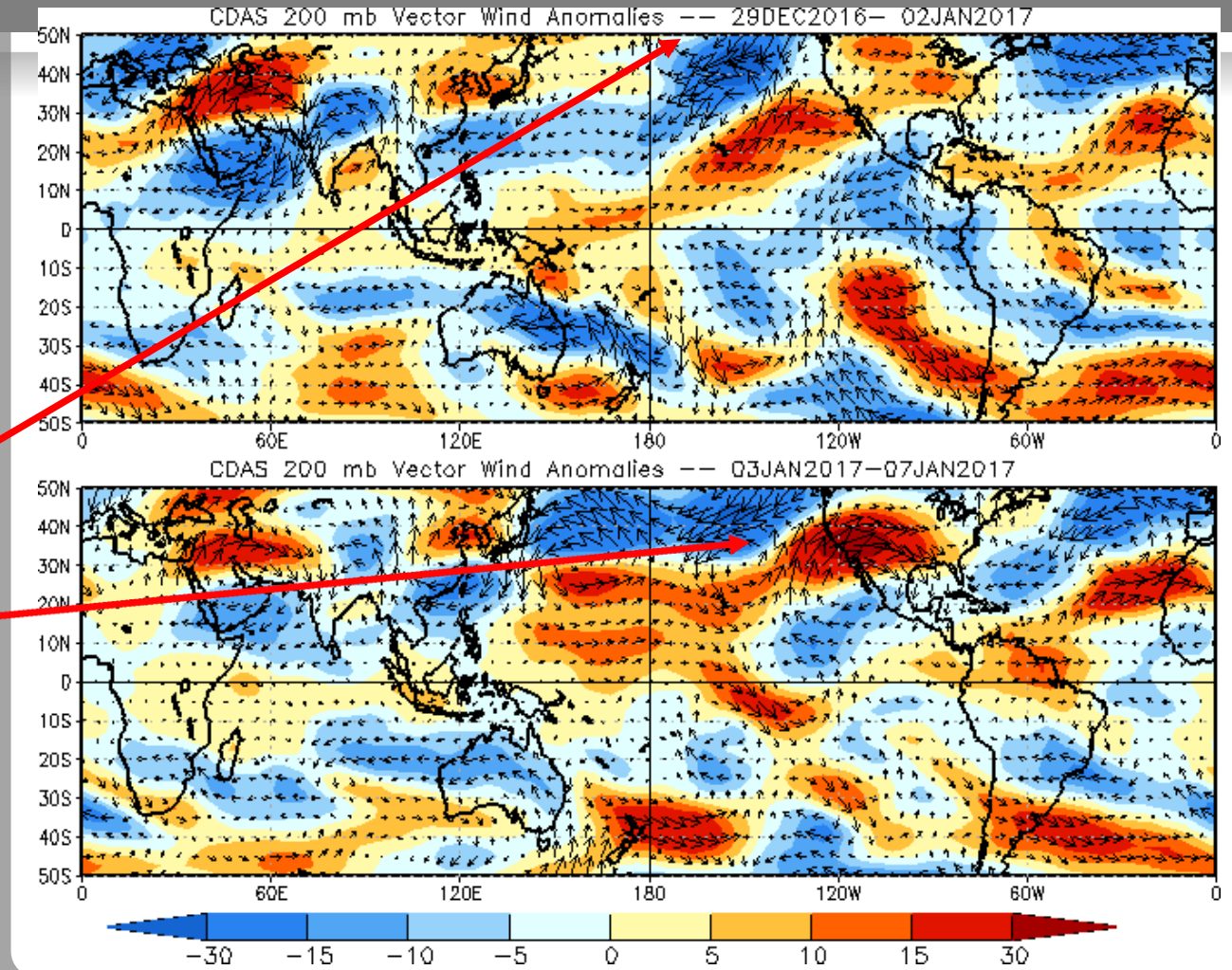
Negative anomalies (green contours) indicate favorable conditions for precipitation

200-hPa Vector Wind Anomalies (m s^{-1})

Note that shading denotes the zonal wind anomaly

Blue shades: Easterly anomalies

Red shades: Westerly anomalies



An upper-level anticyclone remained centered over the North Pacific around 50N.

Another anticyclone formed during the past 5-days, in the general vicinity of Baja California.

Recently, there have been generally low-amplitude anomalies over tropical Africa, the tropical Indian Ocean, and the Maritime Continent region.

200-hPa Zonal Wind Anomalies (m s⁻¹)

Westerly anomalies (orange/red shading) represent anomalous west-to-east flow

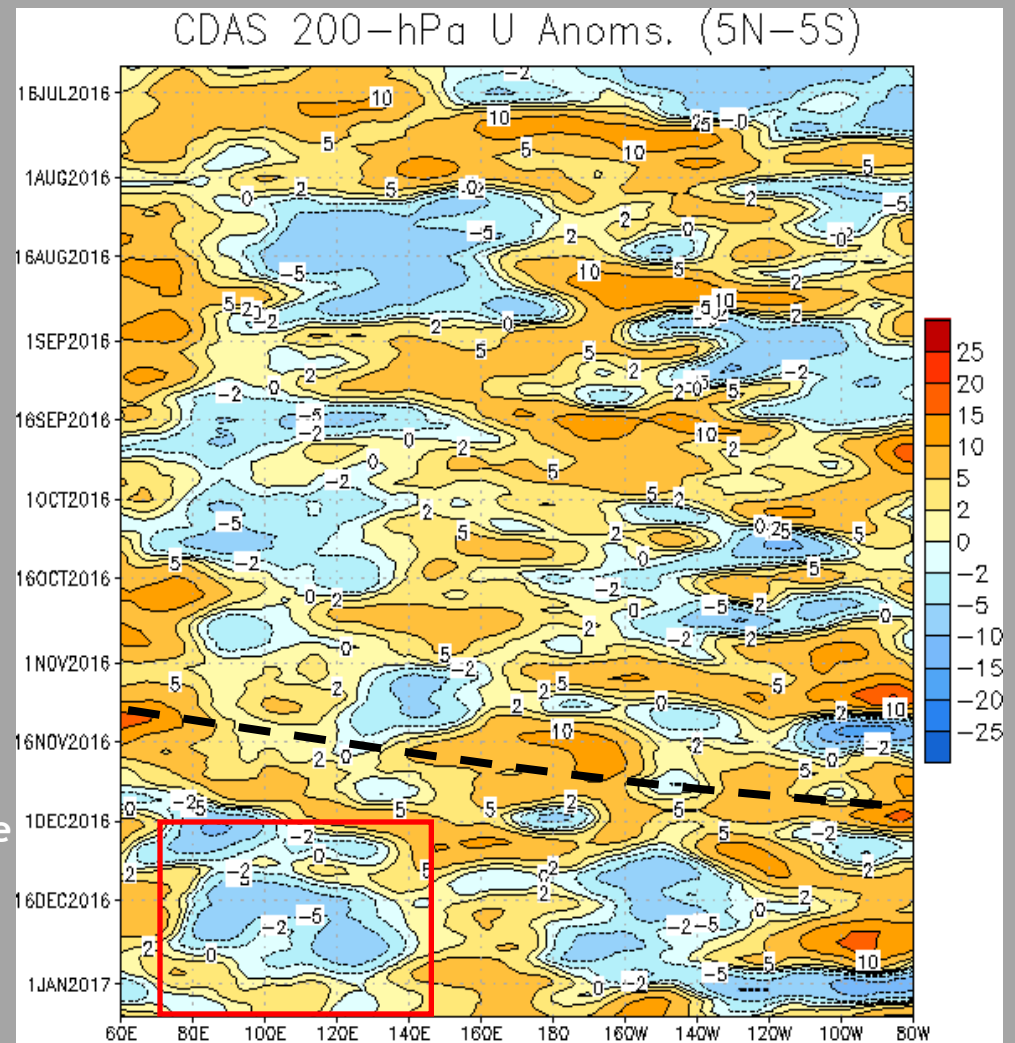
Easterly anomalies (blue shading) represent anomalous east-to-west flow

During July, some eastward propagation was evident, although the spatial consistency implies higher frequency variability than expected with the MJO.

During September, eastward propagation of westerly anomalies was broadly consistent with organized MJO activity.

During November, anomalous westerlies persisted near the Date Line, though intraseasonal variability associated with the MJO is evident.

In late November, easterly anomalies re-emerged across the Indian Ocean and Maritime Continent, consistent with the passage of sub-seasonal activity and the re-alignment of the low frequency base state (red box). Since late December, westerly anomalies returned to most of this area.



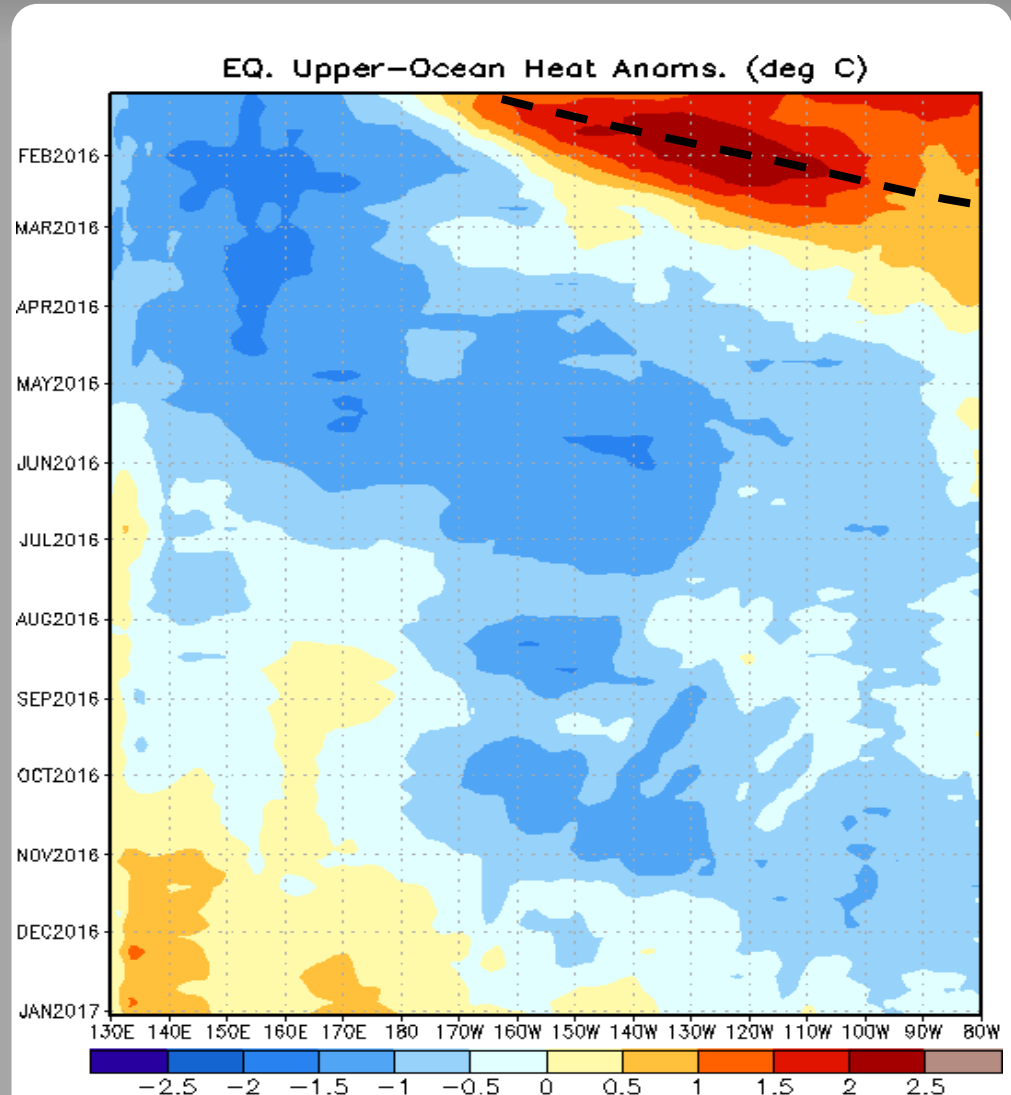
Weekly Heat Content Evolution in the Equatorial Pacific

Oceanic Kelvin waves have alternating warm and cold phases. The warm phase is indicated by dashed lines. Downwelling and warming occur in the leading portion of a Kelvin wave, and upwelling and cooling occur in the trailing portion.

Downwelling events were observed through early February, resulting in persistently above-normal heat content from the Date Line to 80W over that period.

An eastward expansion of below average heat content over the western Pacific is evident through April, with widespread negative anomalies building across the Pacific over the course of the spring and summer months.

Most recently, upper-ocean heat content anomalies have been low amplitude, consistent with the forecast transition to ENSO-neutral conditions over the coming months.



MJO Index -- Information

The MJO index illustrated on the next several slides is the CPC version of the Wheeler and Hendon index (2004, hereafter WH2004).

Wheeler M. and H. Hendon, 2004: An All-Season Real-Time Multivariate MJO Index: Development of an Index for Monitoring and Prediction, *Monthly Weather Review*, 132, 1917-1932.

The methodology is very similar to that described in WH2004 but does not include the linear removal of ENSO variability associated with a sea surface temperature index. The methodology is consistent with that outlined by the U.S. CLIVAR MJO Working Group.

Gottschalck et al. 2010: A Framework for Assessing Operational Madden-Julian Oscillation Forecasts: A CLIVAR MJO Working Group Project, *Bull. Amer. Met. Soc.*, 91, 1247-1258.

The index is based on a combined Empirical Orthogonal Function (EOF) analysis using fields of near-equatorially-averaged 850-hPa and 200-hPa zonal wind and outgoing longwave radiation (OLR).

MJO Index - Recent Evolution

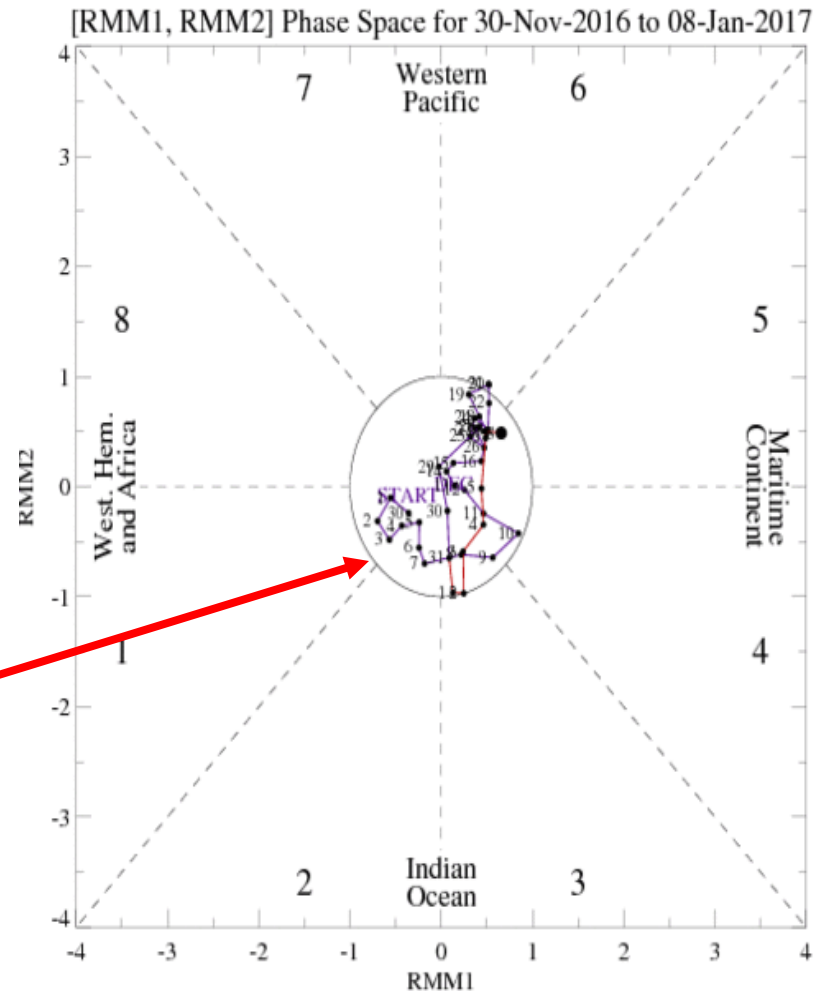
The axes (RMM1 and RMM2) represent daily values of the principal components from the two leading modes

The triangular areas indicate the location of the enhanced phase of the MJO

Counter-clockwise motion is indicative of eastward propagation. Large dot most recent observation.

Distance from the origin is proportional to MJO strength

Line colors distinguish different months

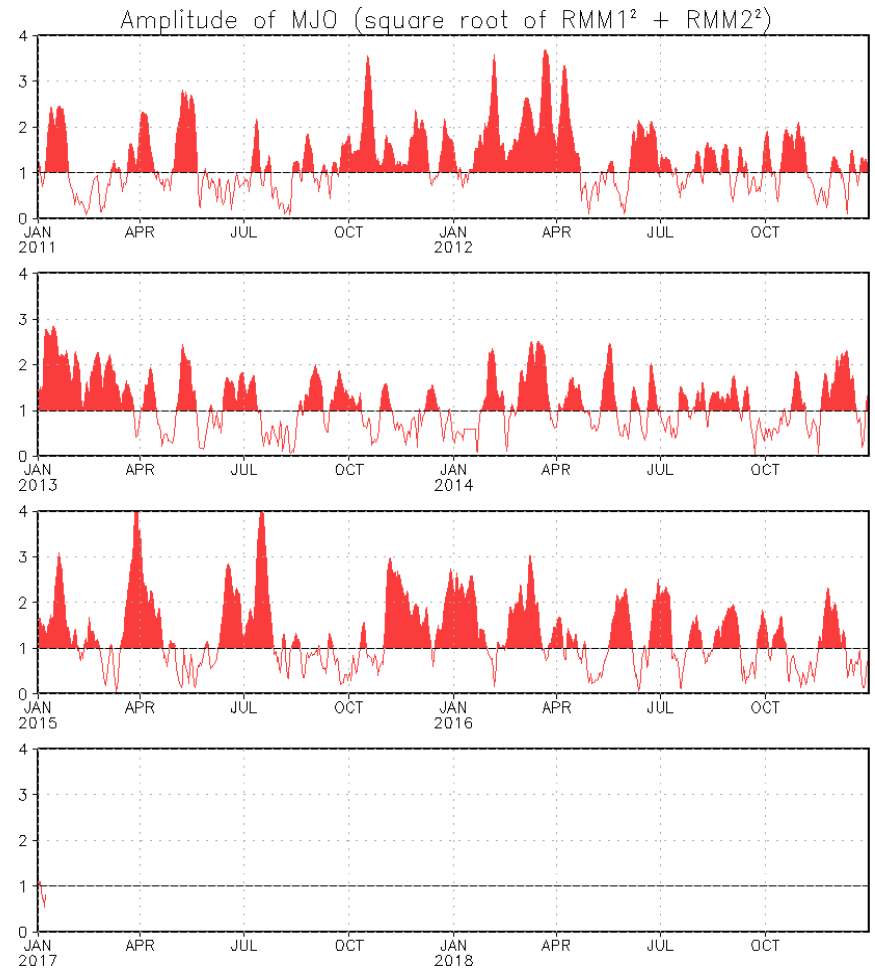


The MJO index remained low in amplitude (within or close to the unit circle) during December and early January.

MJO Index - Historical Daily Time Series

Time series of daily MJO index amplitude for the last few years.

Plot puts current MJO activity in recent historical context.



GFS Ensemble (GEFS) MJO Forecast

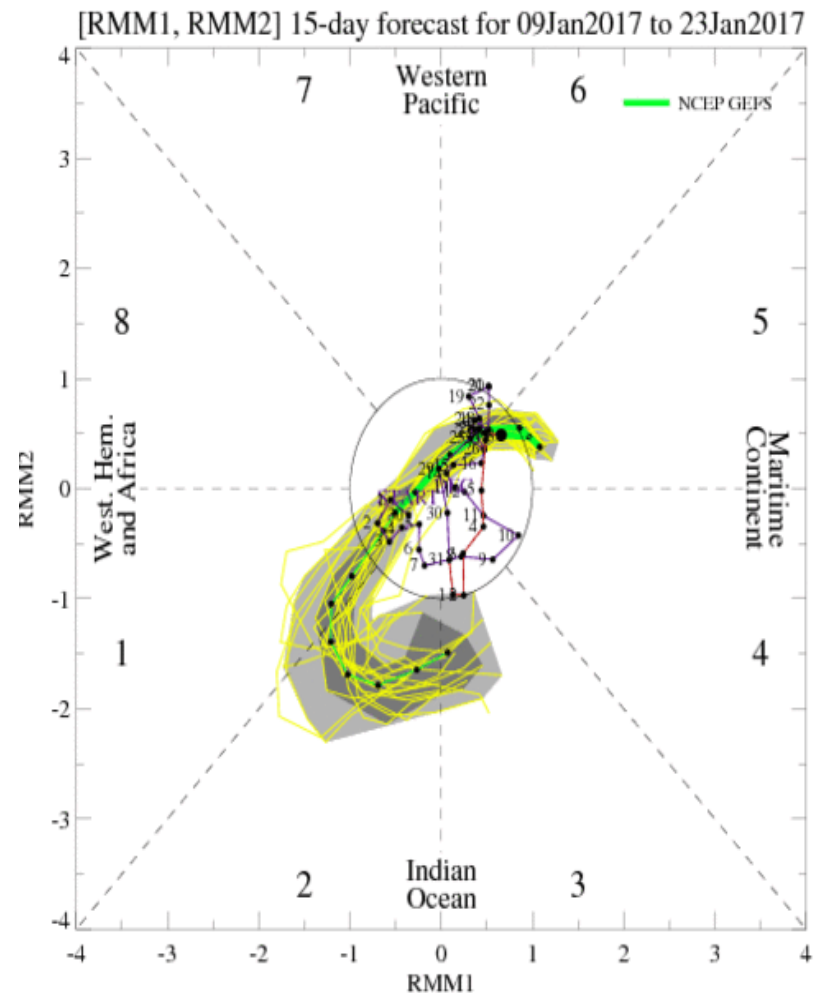
RMM1 and RMM2 values for the most recent 40 days and forecasts from the GFS ensemble system (GEFS) for the next 15 days

light gray shading: 90% of forecasts

dark gray shading: 50% of forecasts

The GEFS forecast depicts a weak signal during Week-1. The signal strengthens across Africa and the western Indian Ocean during week-2.

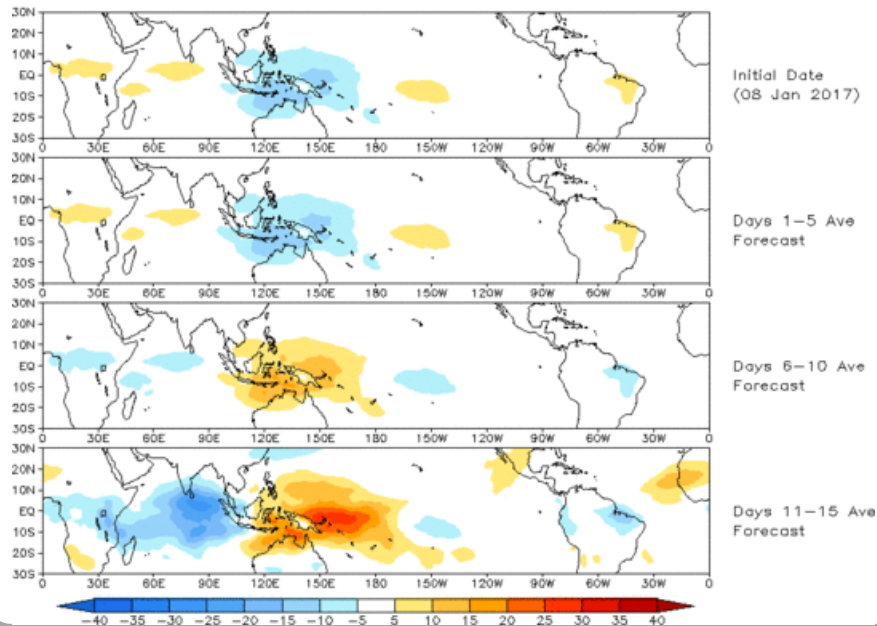
Yellow Lines - 20 Individual Members
Green Line - Ensemble Mean



Ensemble GFS (GEFS) MJO Forecast

Spatial map of OLR anomalies for the next 15 days

Prediction of MJO-related anomalies using GEFS operational forecast
Initial date: 08 Jan 2017
OLR

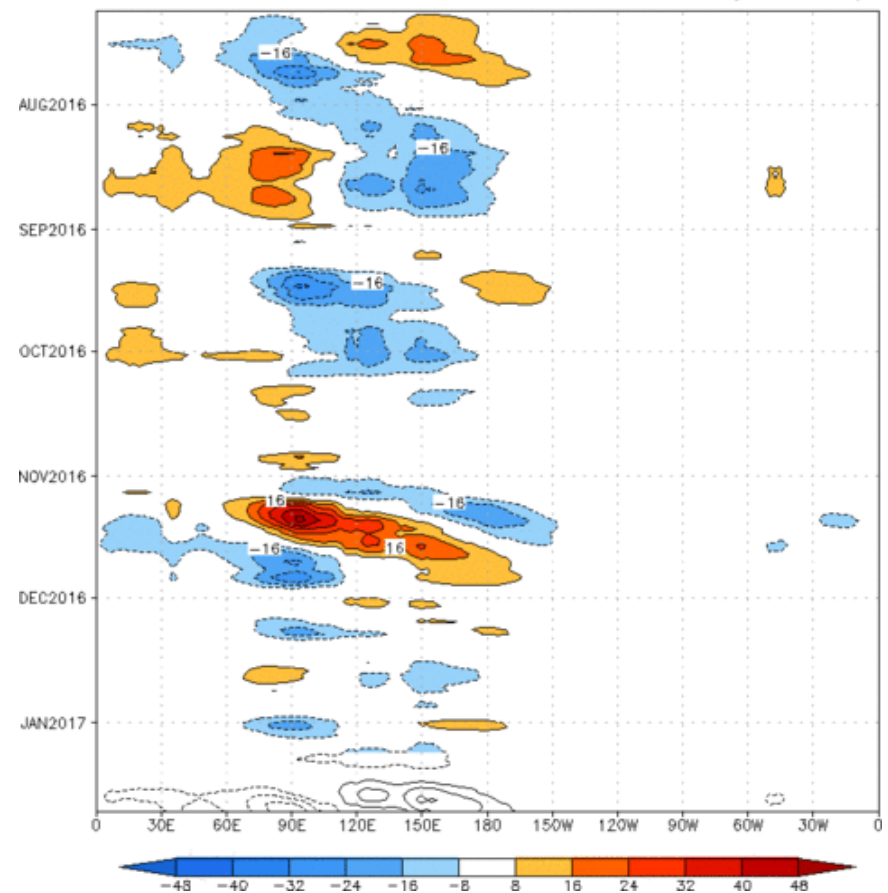


The prediction for OLR anomalies over the next two weeks based on the GEFS RMM forecast indicates enhanced convection developing over the Indian Ocean by Week-2.

Figures below show MJO associated OLR anomalies only (reconstructed from RMM1 and RMM2) and do not include contributions from other modes (*i.e.*, ENSO, monsoons, etc.)

Time-longitude section of (7.5° S- 7.5° N) OLR anomalies - last 180 days and for the next 15 days

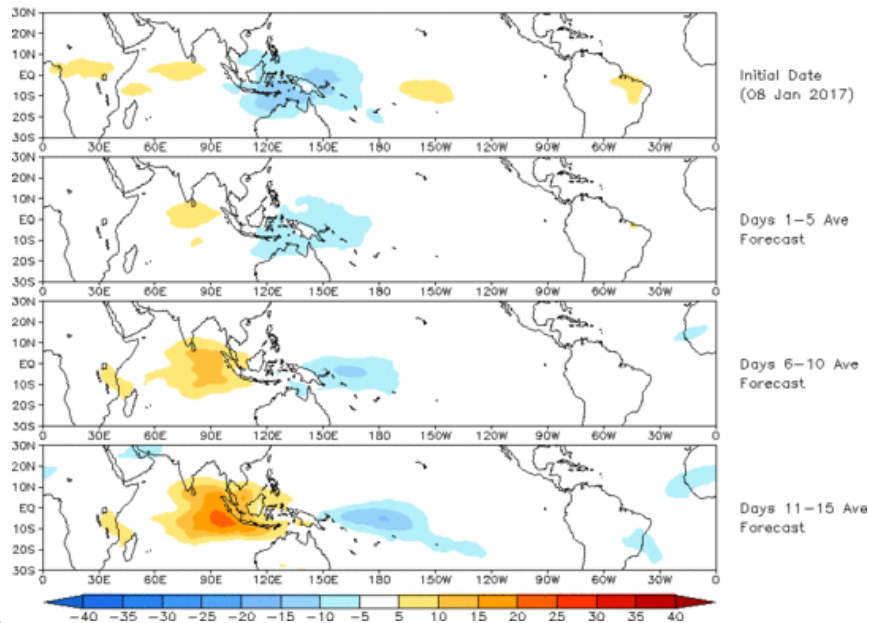
Reconstructed anomaly field associated with the MJO using RMM1 & RMM2
OLR [7.5° S, 7.5° N] (cint: 4Wm^{-2}) Period: 09-Jul-2016 to 08-Jan-2017
The unfilled contours are GEFS forecast reconstructed anomaly for 15 days



Constructed Analog (CA) MJO Forecast

Spatial map of OLR anomalies for the next 15 days

OLR prediction of MJO-related anomalies using CA model
reconstruction by RMM1 & RMM2 (08 Jan 2017)

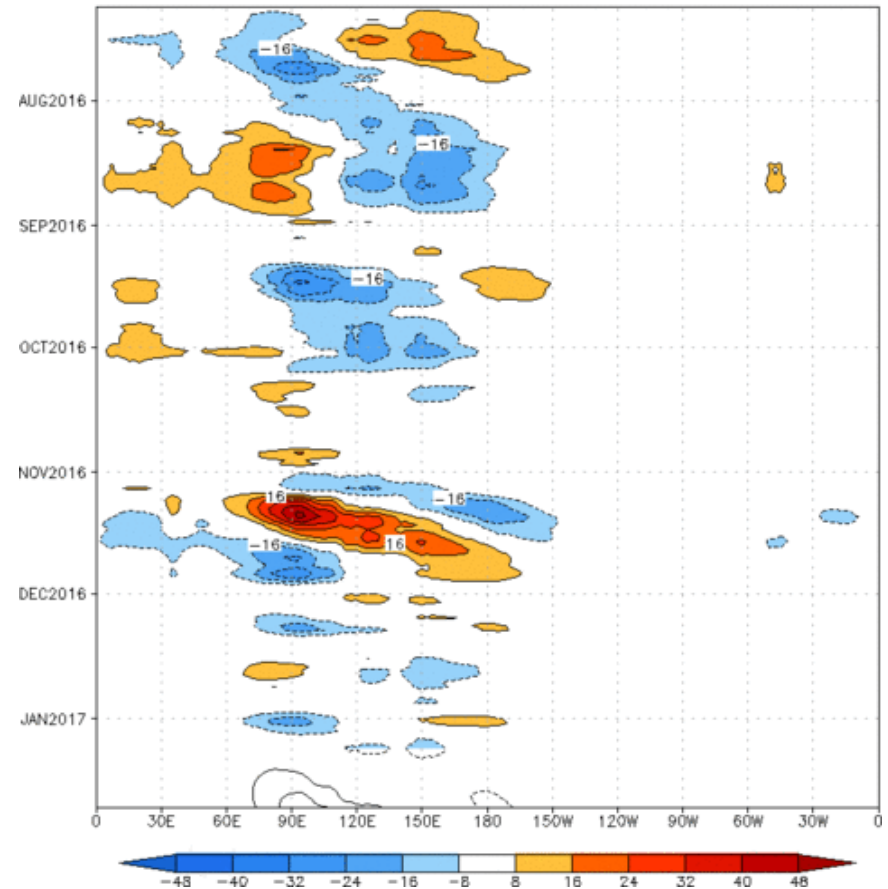


The prediction for OLR anomalies based on the constructed analog RMM forecast indicates eastward propagation of suppressed convection from the Indian Ocean to the western Maritime Continent.

Figures below show MJO associated OLR anomalies only (reconstructed from RMM1 and RMM2) and do not include contributions from other modes (*i.e.*, ENSO, monsoons, etc.)

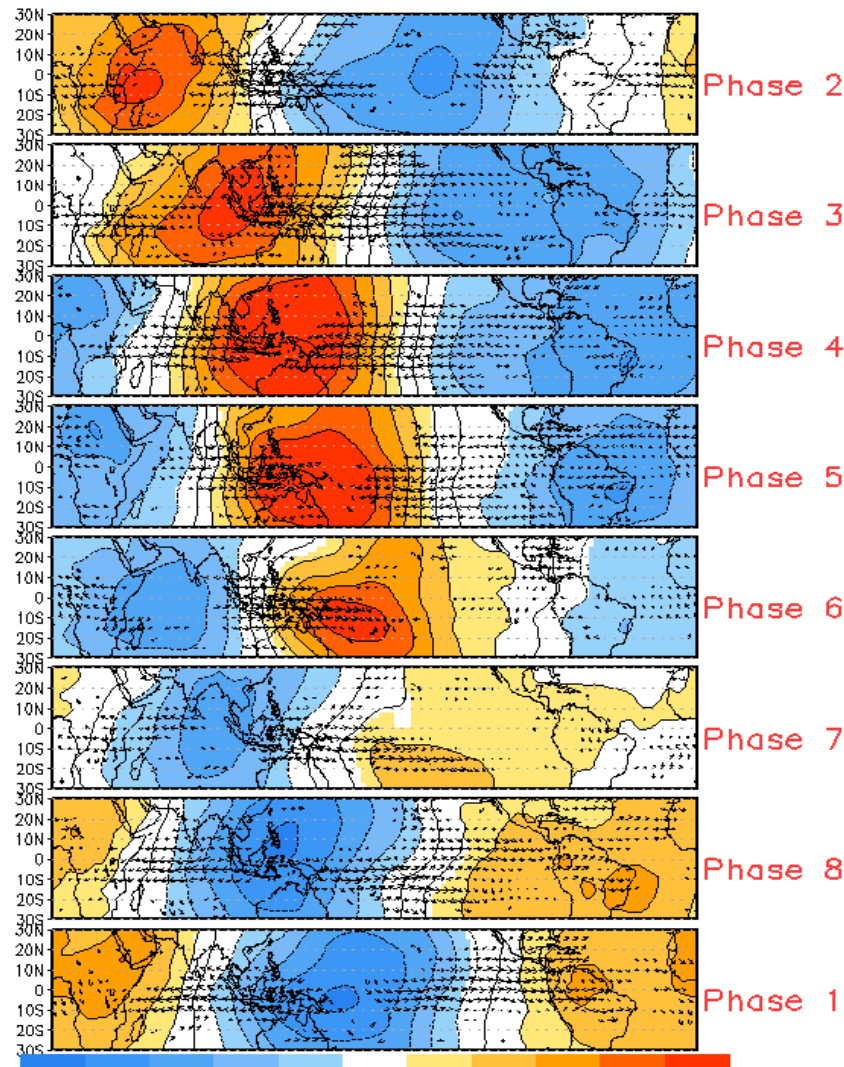
Time-longitude section of (7.5° S– 7.5° N) OLR anomalies - last 180 days and for the next 15 days

Reconstructed anomaly field associated with the MJO using RMM1 & RMM2
OLR [7.5° S, 7.5° N] (cint: $4Wm^{-2}$) Period: 09-Jul-2016 to 08-Jan-2017
The unfilled contours are CA forecast reconstructed anomaly for 15 days

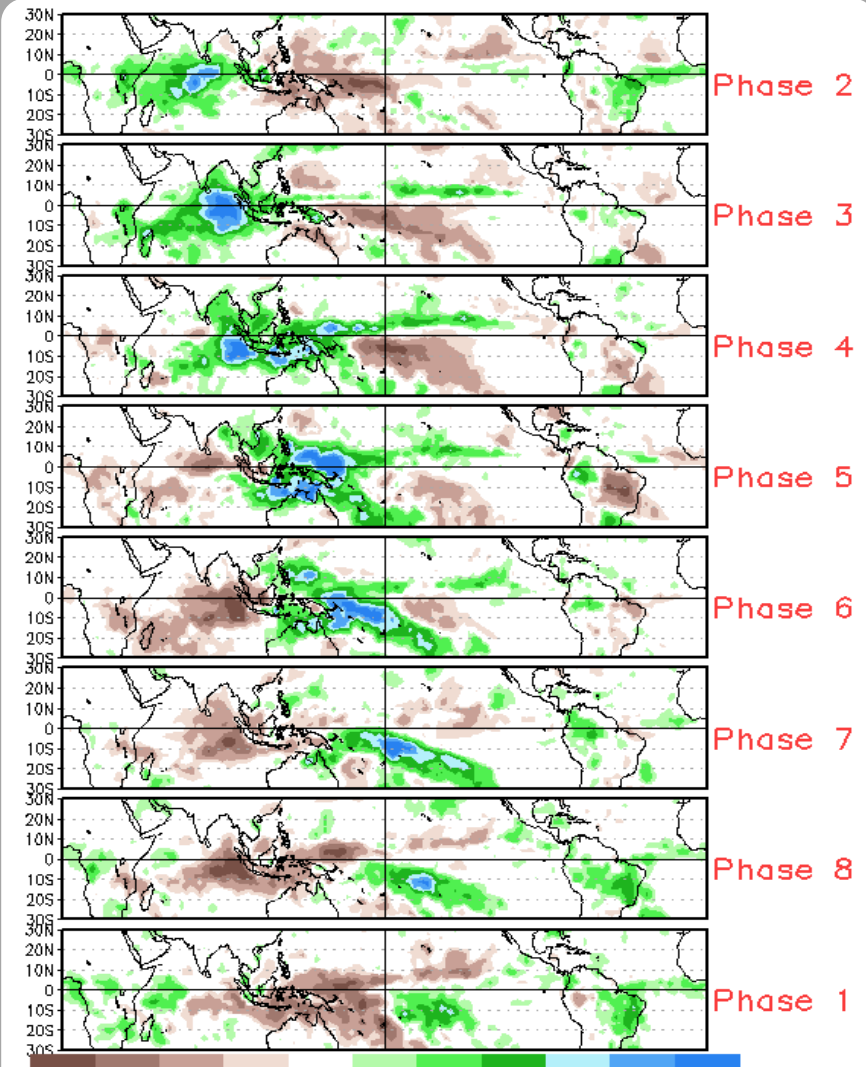


MJO Composites - Global Tropics

850-hPa Velocity Potential and
Wind Anomalies (Nov - Mar)



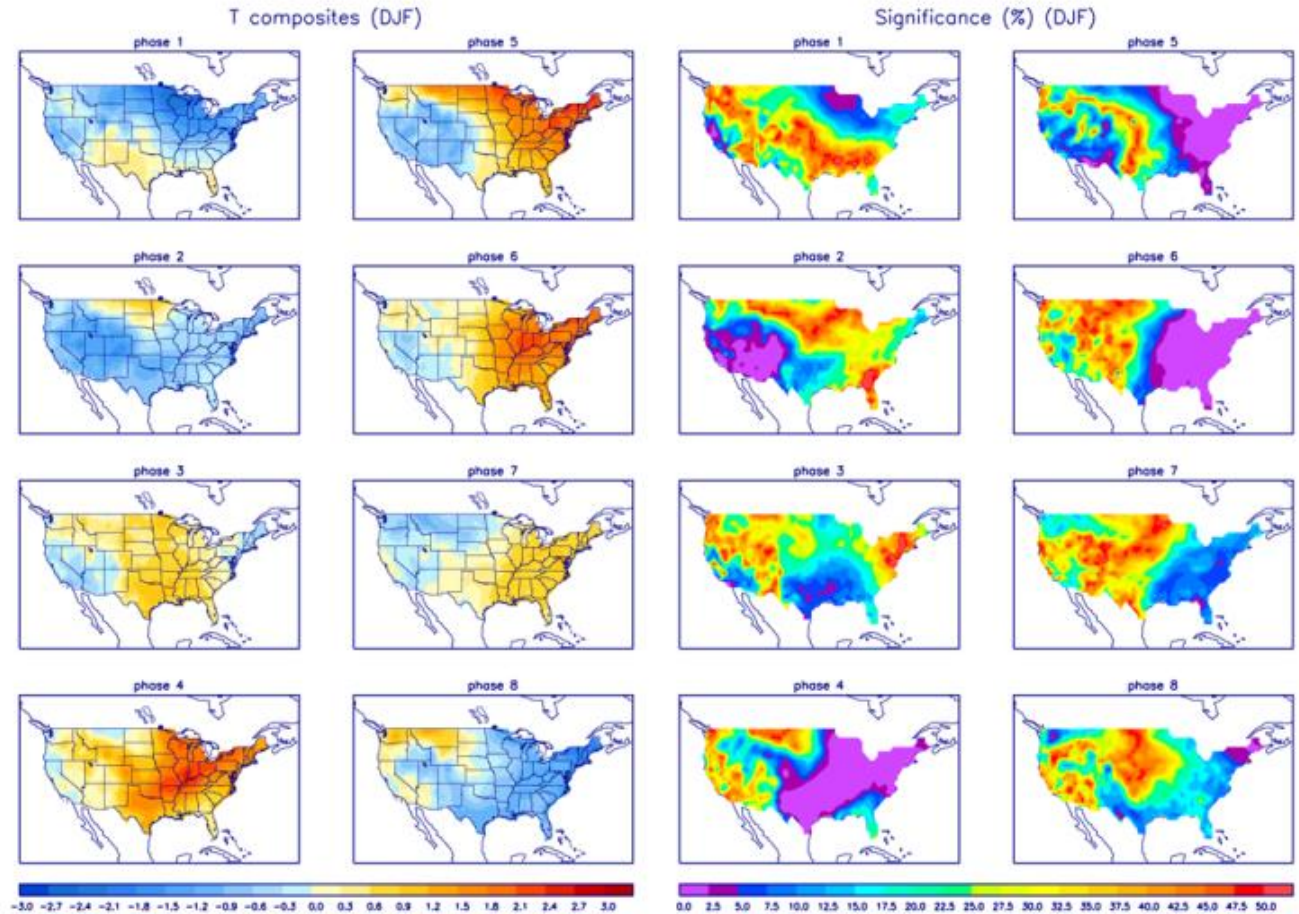
Precipitation Anomalies (Nov - Mar)



U.S. MJO Composites - Temperature

Left hand side plots show temperature anomalies by MJO phase for MJO events that have occurred over the three month period in the historical record. Blue (orange) shades show negative (positive) anomalies respectively.

Right hand side plots show a measure of significance for the left hand side anomalies. Purple shades indicate areas in which the anomalies are significant at the 95% or better confidence level.



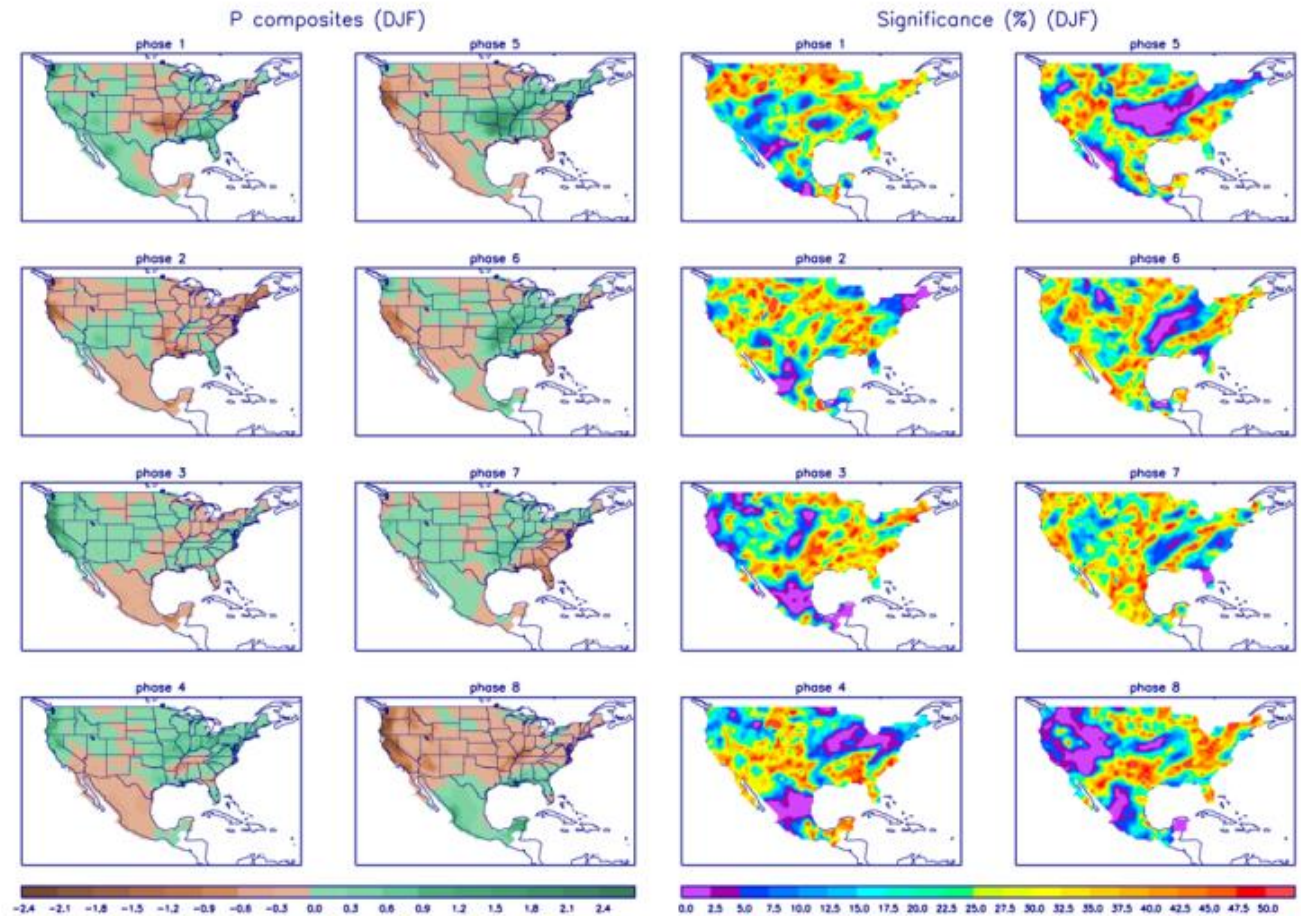
Zhou et al. (2011): A composite study of the MJO influence on the surface air temperature and precipitation over the Continental United States, *Climate Dynamics*, 1-13, doi: 10.1007/s00382-011-1001-9

<http://www.cpc.ncep.noaa.gov/products/precip/CWlink/MJO/mjo.shtml>

U.S. MJO Composites - Precipitation

Left hand side plots show precipitation anomalies by MJO phase for MJO events that have occurred over the three month period in the historical record. Brown (green) shades show negative (positive) anomalies respectively.

Right hand side plots show a measure of significance for the left hand side anomalies. Purple shades indicate areas in which the anomalies are significant at the 95% or better confidence level.



Zhou et al. (2011): A composite study of the MJO influence on the surface air temperature and precipitation over the Continental United States, *Climate Dynamics*, 1-13, doi: 10.1007/s00382-011-1001-9

<http://www.cpc.ncep.noaa.gov/products/precip/CWlink/MJO/mjo.shtml>